

# SPOT ON!

THE MAGAZINE

#4/2021

TRENDS

APPLICATIONS

PRODUCTS

 DEKOLIGHT

Our General Terms and Conditions apply. Prices are gross sales prices incl. VAT. These offers cannot be combined with other offers / discounts. All items are always delivered without illuminants, unless the product description specifies otherwise. Errors and omissions excepted. Delivery only while stocks last.

# SPOT ON!

## THE MAGAZINE

### FROM BITS & BYTES



Welcome to the new issue of SpotOn Magazine! After the previous issue was all about the DEKO-LIGHT in-house exhibition we are now back to the usual mix: numerous new products, great references, news from the company and interesting insights into the lighting industry.

Do you know WIBU-Systems? The IT specialist from Karlsruhe is a real hidden champion whose products are in daily use all over the world without us being aware of it. In summer, WIBU-Systems moved into its new company building, which was equipped with our lighting solutions from the foyer up to the penthouse flat. A great reference, which you can read about on page 40.

This time, our new products also revolve around commercial luminaires. The variety of application areas and possibilities never ceases to surprise me. Whether modern workplace luminaires, miniature luminaires for showcases and display windows or the classic spotlight for production halls - you can find out more from page 08.

Visitors to our in-house exhibition in September were already able to view our new showroom on site. Now you can also visit our gem virtually in 3D! You can find out what the virtual showroom has to offer from page 34 onwards.

Look forward with us to the new issue of SpotOn magazine - to light in all its varieties, application scenarios and technologies.

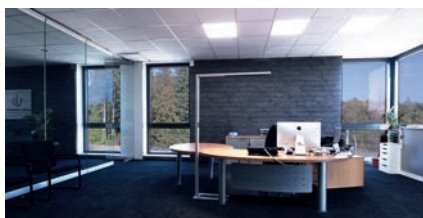
Sincerely,

A handwritten signature in dark ink, appearing to read 'Janosch Sohns'. The signature is fluid and stylized, with a long horizontal stroke extending to the right.

Janosch Sohns

# 1

## SPECIAL



### COMMERCIAL LUMINAIRES 04

What characterises a modern commercial luminaire?



### ONE FOR ALL 06

Application examples for our power rail systems

# 2

## PRODUCT INNOVATIONS



### EMERGENCY LIGHTS 08

New in the range:  
Emergency and safety luminaires

### EMERGENCY LIGHTING: PLANNING BASICS 12

How are escape routes illuminated?  
Where must emergency exit luminaires be located?

### D PROFESSION 14

Modern working light that they hardly notice

### ALTAIS 16

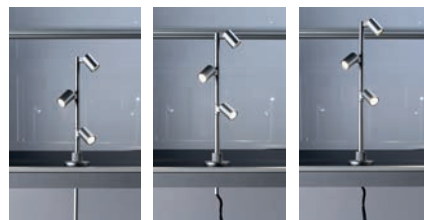
Impact resistant in all light colours

### ALUDRA 18

Strong light from a great height

### DRACONIS 20

Modular luminaire for every scenario



### HERCULIS 22

Small helpers, big effect

### ADHARA 26

Table lamp classics - newly interpreted

### EVENT PANEL 28

Slim pendant luminaire or design element?

### MADERA 30

The Zeitgeist luminaire in grade A

# 3

## COMPANY



### **VIRTUAL SHOWROOM 34**

From now on you can also visit our new showroom virtually

### **NEW IN THE COMPANY 38**

We welcome Denise Lofent and Tim Weller in the office

# 5

## FORUM



### **DEKO-LIGHT IN-HOUSE EXHIBITION 2021 50**

We look back on an all-round successful day

### **THEY ALREADY KNEW? 52**

Who will be the winner of our linear light race?



### **MY LOVE 53**

DEKO-LIGHT employees present their favourite product



### **MARC'S TECH CORNER 54**

Our technology expert Marc Dicker gives tips on LED luminaires & power supplies

# 4

## LIGHTING SOLUTIONS



### **WIBU-SYSTEMS 38**

All about the lighting at the new headquarters of the IT specialist

### **PROFILE OR LUMINAIRE? 44**

Individual LED profiles with elegant aluminium body

### **MASTER OF THE PROJECTS 45**

Your new contact for projects: Andre Ammersken



### **RUN ON LIGHT 46**

An ice rink with integrated LED stripes

# COMMERCIAL LUMINAIRES

## A MODERN WORKING WORLD DEMANDS MODERN LIGHTING SOLUTIONS - FROM OFFICE COMPLEXES TO HOTELS TO PRODUCTION HALLS.

For a long time, the requirements for commercially used luminaires - also known as industrial luminaires - were straightforward: they had to be bright, reliable and low-maintenance, while complying with current directives and standards. These core factors remain unchanged today (and even more so with regard to energy efficiency). But in addition to these purely functional properties, modern users - whether in production halls and warehouses, in offices, hotels and restaurants or in administrative and educational facilities - expect much more from a commercial luminaire in 2021.

Of course, commercial luminaires must first and foremost comply with clearly defined guidelines and standards, for example to ensure safety in the workplace or in public spaces. At the same time, new lighting technologies and findings from various scientific disciplines have greatly expanded the demands placed on commercial luminaires. HCL (Human Centric Lighting) or freedom from glare according to UGR are only two of the keywords that help determine the quality of modern commercial lighting solutions. In addition, the aesthetic component is also playing an increasingly important role - not only in obvious areas of application in gastronomy & hotels, but also in administration buildings and even production halls, which are planned with considerably more knowledge of work economics and attention research than in the past. Thanks to the triumphant advance of LEDs, manufacturers today have far more scope for designing technical luminaires to meet the increased requirements of the market. requirements precisely.



### THE PERFECT WORK LIGHT...

...depends on various factors and changes according to requirements, room and time of day. Basically, a commercial luminaire must support the work processes of people whether assembling a car or working at a computer at an office desk.

The same applies to kindergartens, schools and universities - here, too, the light must support long periods of concentration without being perceived as a disturbing element. To achieve this, there are various values and key figures, some of which have only come into being as a result of the new technological possibilities in the lighting sector. In the following, we would like to present some of them to you.



## HCL

HCL stands for "Human Centric Lighting" and means the simulation of lighting situations according to the biological day-night rhythm of humans. HCL matches artificial light indoors to natural daylight and promotes well-being, mood and health. Numerous DEKO-LIGHT luminaires can already be integrated into an HCL control system to adjust the light colours to the biorhythm. In addition, several LED stripes in different light colours can be combined in one profile and thus integrated into the HCL lighting design.



## DALI

DALI (Digital Addressable Lighting Interface) is a protocol for controlling lighting control gear. Luminaires that can be dimmed via DALI can be flexibly integrated into lighting/object management systems. The great advantage lies in the wiring: via DALI, all luminaires in a line can be individually addressed and controlled. But this variant is also suitable for individual luminaires: DALI dimmers without an address exist for this purpose, which directly address the power supply unit.



## IK

The IK value indicates how shock and impact resistant a luminaire or certain components are. IK00 offers no protection against external mechanical stress, IK10 or IK10+ means that the luminaire can withstand a 5 or 10 kg test weight from 40 or 50 cm. 50 cm. In addition to the IP protection class, the IK value is increasingly required for tenders and installations in public spaces.



## RA

The colour rendering index Ra describes the measure of the correspondence of the perceived light colour between an existing lighting situation and a reference light source. The smaller the deviation, the better the colour rendering. A light source with Ra 100 reproduces all colours exactly. The lower the Ra value, the less precisely the colours are reproduced.



## UGR

The smaller the UGR value, the more glare-free a luminaire emits its light. Especially in offices, you should use luminaires with a UGR value of less than 19 to avoid disturbing reflections. When determining the UGR value of a complete room, additional factors such as the wall colour(s) and the surface finish play a role.



**RA 70-80** medium colour rendering



**RA 80-90** good colour rendering



**RA 90-100** very good colour rendering

# ONE FOR ALL

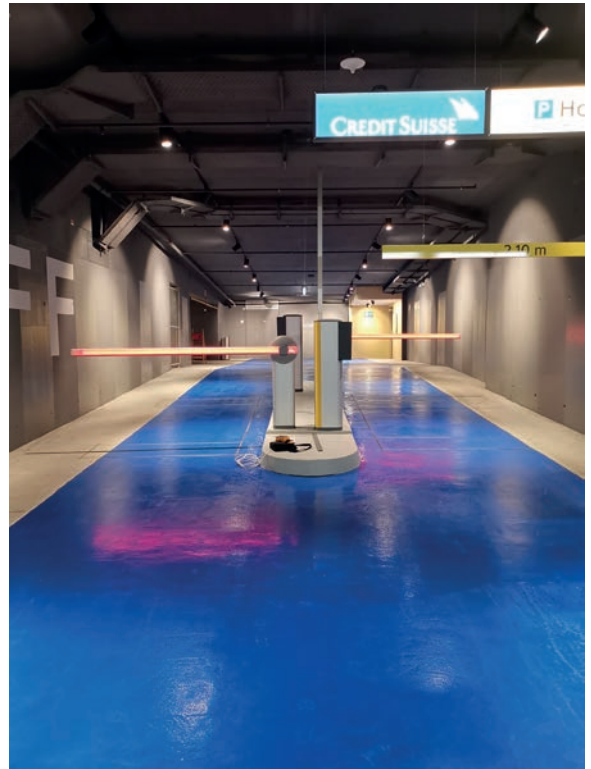
**CONDUCTOR RAILS ARE VERSATILE WORKHORSES, WHICH, THANKS TO THEIR FLEXIBILITY, CAN BE USED ALMOST ANYWHERE. WE PROVIDE A FEW SUGGESTIONS.**

Power rail systems have been used in offices and retail outlets for a long time and are unbeatable in terms of flexibility: once installed, luminaires can be relocated without additional installation effort and thus adapted to changing room situations. As the power is carried along in the track, the question of an existing power connection to ceilings is a thing of the past. However, more and more architects, lighting designers and builders are also discovering the advantages of power rail systems in private homes. In the following, we would like to show you which projects and applications our customers have realised with our power rail systems. The range extends from classic shop lighting to individual design solutions.



## **effectively:**

The all-round rail system sets the scene for the colour foils in an otherwise plain staircase.



## **pointing the way:**

A parking garage is a functional place that not only shows the way by means of track lighting, but also loses much of its cool atmosphere.



**eye-catche:**

If you are creative and find the right conditions, you can create a modern design highlight with a simple track. modern design counterpoint to the historic vaulted cellar architecture.



**promoting sales:**

Classic shop lighting using power track supports product presentation and ideally increases sales figures.



**meaningful:**

In the open-plan school library with high ceilings, discreet power rail systems in a white colour finish provide ideal lighting conditions when daylight is insufficient.

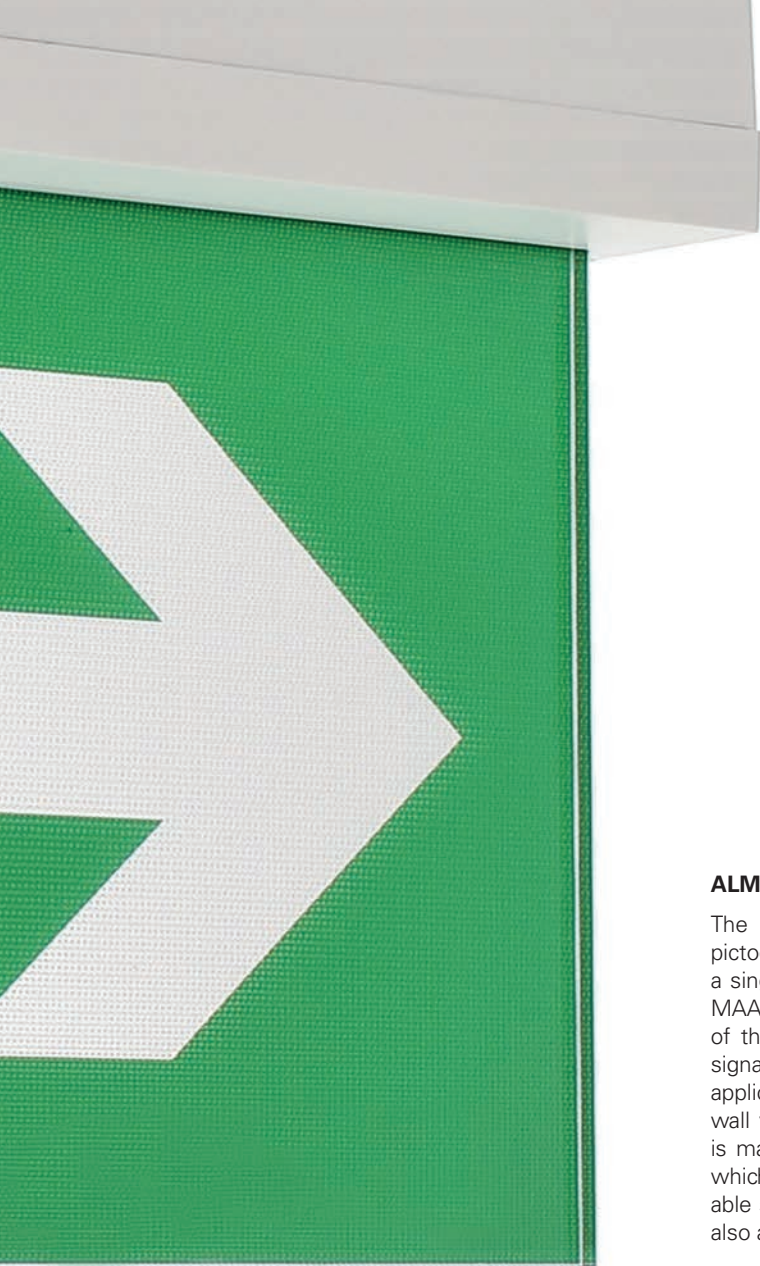
Foto: Daniel Voser / Architektur fotografie, Karlsruhe



## A LIGHT IN THE GREATEST NEED

**DEKO-LIGHT NOW ALSO HAS EMERGENCY LUMINAIRES IN ITS PORTFOLIO. WE SHOW YOU THE MOST IMPORTANT REPRESENTATIVES.**

Everyone knows them - the green emergency exit luminaires that indicate the exit from a building with a pictogram. In the best case, visitors and guests do not have to worry about this special type of luminaire. For operators of public buildings, such as workplaces, event venues and sales outlets, but also in the private sector, the opposite is true, because even the simplest single-battery luminaire needs to be checked regularly. On the following pages, we explain what types of emergency lighting are available, how they are monitored and what needs to be borne in mind when planning emergency lighting. Below you will find an overview of the emergency luminaires DEKO-LIGHT has recently added to its range.



### ALMAAZ

The ALMAAZ is a classic emergency luminaire with pictogram set and is used to mark the escape route. As a single-battery luminaire with auto-test function, the ALMAAZ - available in flat and cone versions - carries out part of the prescribed DIN function tests independently and signals faults via an integrated buzzer. Depending on the application, the ALMAAZ can be mounted on the ceiling or wall via the rotatable housing. The emergency luminaire is made even more flexible by the pictograms supplied, which indicate escape routes in all directions. Interchangeable special pictograms (first aid kit, fire extinguisher) are also available as an option.



### Quick facts:

- detection range 27m
- single battery technology with LiFePO4 battery
- autotest function with buzzer
- rotatable housing for ceiling or wall mounting
- incl. changeable pictogram set in all directions

# 2

## ALSAFI

The ALSAFI is not only wider than the ALMAAZ (360 mm instead of 283 mm), but can also be suspended freely in the room from the ceiling or a cross strut thanks to the integrated cut-outs for pendant mounting.



### *Quick facts:*

- detection range 16m
- single battery technology with LiFePO4 battery
- autotest function with buzzer
- rotatable housing for ceiling or wall mounting
- cut-outs for pendant mounting
- reflector with hinges
- incl. changeable pictogram set in all directions



ALMACH

As an emergency luminaire, the ALMACH has a different function: it does not indicate the escape route, but illuminates corridors and areas with its special lens for area lighting. As winner of the Red Dot Design Award, the ALMACH also proves that emergency lighting can also be visually convincing.



Quick facts:

- single battery technology with LiFePO4 battery
- SK II / III with INSiLIA technology
- 3h/8h bridging time
- simple click mounting
- rotatable

ALNAIR

The ALNAIR is the visually discreet recessed ceiling version of the ALMACH, has the same special lens and is also used optionally for illuminating surfaces or corridors.

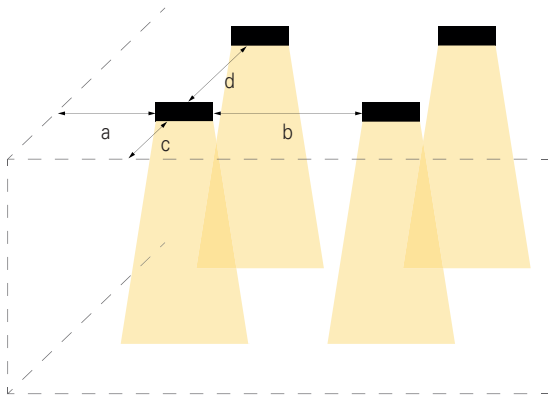


Quick facts:

- diameter: 78 mm
- single battery technology with LiFePO4 battery
- SK II / III with INSiLIA technology
- 3h/8h bridging time

PHOTOMETRIC DATA

	a		b		c		d		c		d	
	area lighting								escape route lens			
mounting height	1 W	2 W	1 W	2 W	1 W	2 W	1 W	2 W	1 W	2 W	1 W	2 W
2,5 m	3,50	3,92	7,84	8,84	2,72	3,03	6,05	7,00	5,02	5,77	11,54	13,46
3,0 m	3,78	4,37	9,09	9,82	3,05	3,52	6,79	7,83	5,55	6,33	12,65	14,60
3,5 m	3,97	4,93	9,85	11,04	3,33	3,83	7,66	8,52	5,98	7,07	14,15	16,26
4,0 m	3,81	5,24	10,48	12,16	3,56	4,09	8,18	9,41	6,32	7,75	15,50	17,74
4,5 m	-	5,50	10,99	13,19	3,73	4,45	8,90	10,24	6,12	8,37	16,74	19,09
5,0 m	-	5,50	11,00	14,14	3,87	4,62	9,56	11,00	-	8,57	-	20,30
5,5 m	-	-	-	15,00	-	4,91	-	11,69	-	8,72	-	21,39
6,0 m	-	-	-	15,23	-	5,17	-	12,32	-	8,82	-	22,38
6,5 m	-	-	-	15,37	-	5,41	-	12,90	-	8,56	-	23,27
7,0 m	-	-	-	15,99	-	5,43	-	13,42	-	-	-	-
7,5 m	-	-	-	15,98	-	5,61	-	13,89	-	-	-	-



- a: distance from luminaire [narrow side] to wall
- b: distance from luminaire [narrow side] to luminaire [narrow side]
- c: distance from luminaire [long side] to wall
- d: distance from luminaire [long side] to luminaire [long side]

# 2

# EMERGENCY LIGHTING: PLANNING BASICS

**IF YOU WANT TO INTEGRATE EMERGENCY LIGHTING INTO YOUR LIGHTING DESIGN, YOU HAVE TO FOLLOW THE MUST PROCEED EXACTLY ACCORDING TO THE REGULATIONS. WE EXPLAIN THE BASICS.**

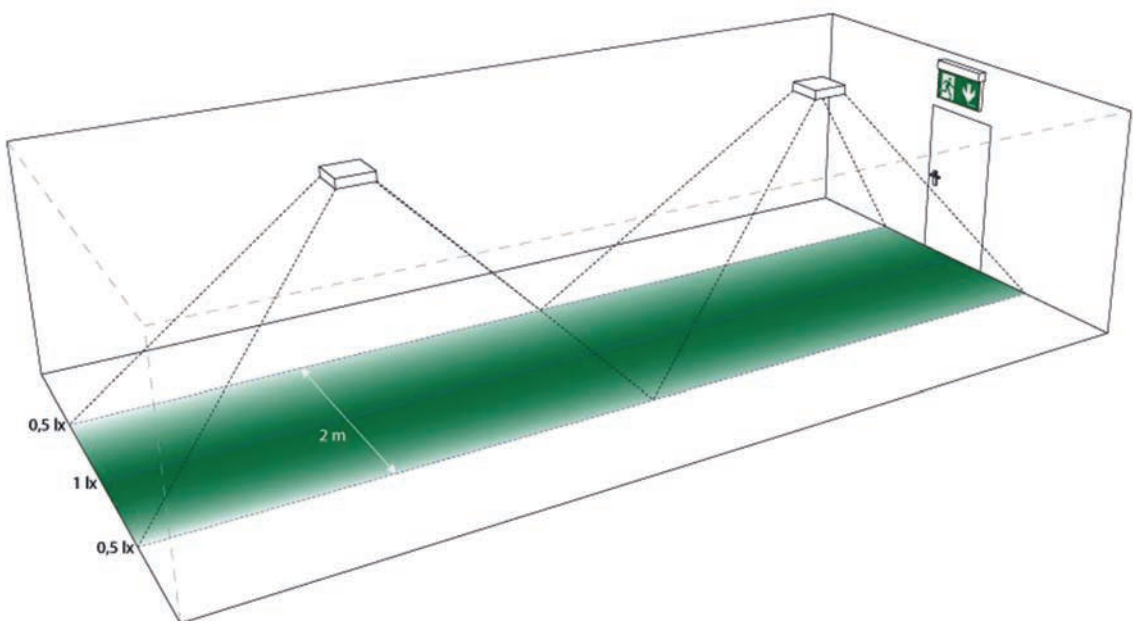
Emergency lighting comprises two areas: Emergency lighting and safety lighting. In this case, we will deal only with safety lighting, or more precisely: with the planning of safety lighting for escape routes and the placement of safety signs (lighting for escape routes and emergency exits). As a general rule - whether at the workplace, in a school, a concert hall or a restaurant: two escape routes must be provided AND marked for each storey. If a fire occurs, the power fails or there is some other danger and impairment, safety lighting counteracts darkness, disorientation and panic and enables people to leave a room or building safely via the designated escape routes.

## safety lighting

The following applies to lighting design: safety lighting in corridors needs to illuminate an area at least two metres wide at floor level with an illuminance of 1 lx (measured at a height of 20 cm above the floor). At the lateral edges, at least half the illuminance (0.5 lx) must be achieved. At the same time, the ratio of the lowest to the highest illuminance along the centre line of the escape route must not be less than 1:40. As the lower limit is set at 1 lx and thus applies to the outer edge of the light cone, the emergency luminaire must provide 40 lx at the brightest point in the centre.

Incidentally, the 1 lx rule also applies to stairs, the steps of which must be recognisable at all times in both walking directions (!). Here, special attention must be paid to the positioning of the emergency luminaires so that the light cone is not partially interrupted by other people. Ideally, stairways on escape routes should have integrated step lighting to ensure safe stepping in case of emergency or panic. The locations of first aid boxes (first aid point) and fire extinguishers (fire-fighting equipment) are also safety-relevant places and must be illuminated with at least 5 lx above the floor according to EN 1838.

## EN1838-4.1.1



### QUICK OVERVIEW: THIS IS HOW EMERGENCY LUMINAIRES MUST BE FITTED

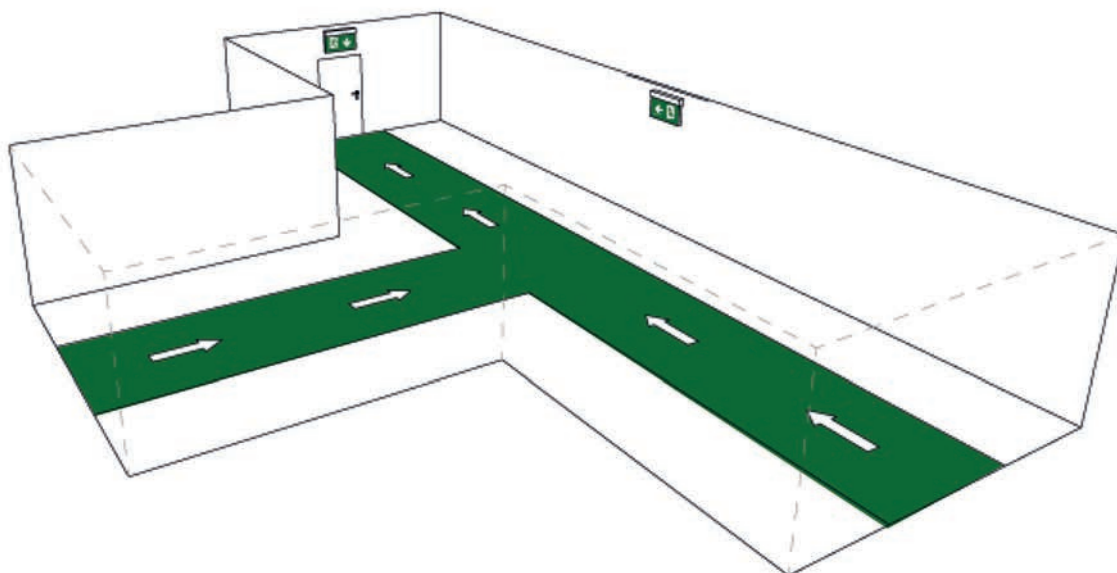
- at least 2 metres above the floor
- at the exit doors
- near stairs (max. 2 metres distance)
- near any first aid point (max. 2 metres distance)
- near any fire-fighting or detection equipment (max. distance 2 metres)
- outside the building near every last exit (max. 2 metres distance)

### marking of escape routes

The marking of escape routes serves the purpose of orientation. Therefore, at least one escape sign luminaire (emergency exit luminaire) must be visible from every possible location. Furthermore, every change of direction in the escape route must be indicated by a luminaire. The same applies to crossings and forks in corridors and hallways. In addition, an emergency exit light must be installed above each escape door. Even outside buildings that provide for a designated assembly point, the escape route to the assembly point must be marked and illuminated.

#### EN1838-4.1.1

##### change of direction in the escape route



# 2 D PROFESSION

## PROFESSIONAL FOR YOUR PROFESSION. A MODERN WORK LIGHT THAT YOU HARDLY NOTICE.

PRODUCT INNOVATIONS

Thanks to their flexible control options, you can use the D PROFESSION- pendant luminaires can be used in both private and commercial applications - either in the DOWN or UP AND DOWN version, which not only illuminates a workstation precisely but also creates atmospheric ambient light. Common to both versions is their slim, modern aluminium design and high luminous intensity including a low UGR value for glare-free task lighting. In addition, both D PROFESSION pendant luminaires can be suspended up to 3 metres from the ceiling, allowing them to be used in high rooms.



### *typical applications*

- office / home office
- hotel / gastronomy
- dining / living area



### *Quick facts: D PROFESSION*

- type: pendant luminaire
- high light output
- UGR <19
- max. suspension: 3000 mm
- colours: white, silver, black



#### **D PROFESSION DOWN**

With its UGR value <19, the D PROFESSION DOWN is perfect for the home office, but as a dimmable luminaire it also creates a great lighting atmosphere in private dining and living areas that harmonises perfectly with modern interior designs.

#### **D PROFESSION UP AND DOWN**

The UP and Down version emits its light in two directions. While the upward LEDs create a pleasant, indirect room light, the downward LEDs provide a defined, powerful and UGR-compliant office and task light for desks and more.

#### **D PROFESSION SETS INCL. POWER SUPPLY**

1. **D PROFESSION + POWER SUPPLY TRIAC**  
dimmable via phase control or phase cut-off  
can be converted to DALI or 1-10V dimmable via optional base
2. **D PROFESSION + POWER SUPPLY 1-10V**  
dimmable via 1-10V  
can be converted to DALI or Triac dimmable via optional base
3. **D PROFESSION + POWER SUPPLY DALI**  
dimmable via DALI bus according to IEC 62386 DALI 1.0  
can be converted to TRIAC or 1-10V dimmable via optional base



# ALTAIS

## IT TAKES A LOT TO EMBARRASS THE ALTAIS.

There it hangs from the ceiling - and radiates maximum confidence. The ALTAIS does not want to be an eye-catcher, but simply does its job. Thanks to IP54 and IK10 impact resistance class, the slim surface-mounted luminaire is convincing in almost any environment: in publicly accessible areas, high-quality sanitary installations or in sports centres. Additional flexibility is offered by the Altais series, available in three sizes and luminous intensities, in the ALTAIS MOTION version with integrated motion sensor. Here, the detection zone, the daylight sensor and the lighting duration can be individually programmed via the remote control supplied. Furthermore, all ALTAIS models offer the possibility to adjust the light colour to the respective environment via a dip switch.



product video

### *Quick facts: ALTAIS*

- type: ceiling mounted luminaire
- IP54
- IK10
- motion sensor (ALTAIS MOTION)
- adjustable light colour  
(3.000 / 4.000 / 6.000 K)
- 75,000 switching cycles
- remote control included



- ▲ simple installation: the ALTAIS locks into place on the ceiling spring clips on the ceiling bracket.



- ▲ The light colour of the ALTAIS can be adjusted via the dip switch on the back of the housing.

## *typical applications*

- office
- public areas
- sanitary



- ▲ The supplied remote control allows adjustment of the motion sensor, hold time and more.



# ALUDRA

## POWERFUL LIGHT FROM GREAT HEIGHTS - NO PATH IS TOO FAR FOR THE ALUDRA.

Whether in high-bay warehouses, large sales areas or extensive presentation areas - the pendant luminaires of the ALUDRA series present themselves as universal high-bay luminaires for use at great heights. Thanks to their high luminous intensity, wide beam angle and IK10 impact resistance class, ALUDRA luminaires illuminate large areas safely and reliably. areas safely and reliably - also available as a DALI variant with integrated DALI DALI version with integrated DALI bus according to IEC 62386 DALI 1.0. we also offer a matching reflector and suspension set for every ALUDRA model. and a suspension set.

### WHAT IS DALI?

DALI (Digital Addressable Lighting Interface) is a standardised interface for the control of electronic ballasts via digital control signals. The DALI interface can control many luminaires individually with a small number of wires, even over long distances. In addition, DALI can be easily integrated into higher-level building system technologies, such as KNX, EIB (European Installation Bus) or LON (Local Operating Network). The advantage for the installer: with DALI, a wiring change, as required by analogue interfaces with 1...10V technology, is not necessary; the complete lighting in a room can be controlled with only one "gateway" node.



### *Quick facts: ALUDRA*

- type: pendant luminaire
- IP65
- IK10
- 3m connection cable
- 100W and 200W versions  
also available with DALI control



### *typical applications*

- warehouses
- sales areas
- presentation areas

# 2 DRACONIS

THE DRACONIS FLEXIBLY AND MODULARLY PUTS  
WORKPLACES AND AREAS IN THE RIGHT LIGHT.

PRODUCT INNOVATIONS

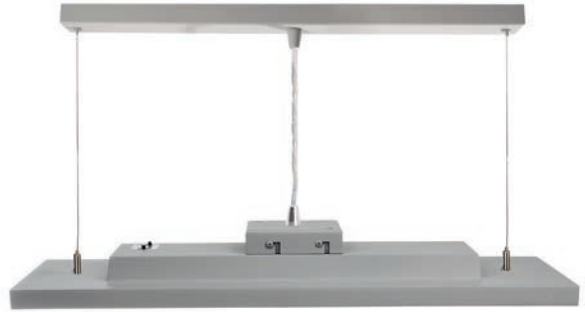


## *typical applications*

- office
- sales areas
- presentation areas
- and much more

## Quick facts: DRACONIS

- type: modular luminaire (ceiling-mounted, pendant-, track-mounted)
- max. 8215 lumen
- output and light colour adjustable via dip switch (CCT)
- optional lenses for symmetrical and asymmetric beam angles
- colours: white aluminium & traffic white



The modular DRACONIS series enables flexible ceiling lighting for a wide variety of applications. Combine the luminaire head with our mounting adapters for optional use as a fixed surface-mounted ceiling luminaire, in a 3-phase track system or as a pendant luminaire, and adjust the output and light colour as required. We also offer several lenses for asymmetrical and symmetrical illumination in several beam angles, so that the DRACONIS can be used in almost any scenario.



product video

	45 W	55 W	72 W
<b>2700 K</b>	4659 lm	5494 lm	6790 lm
<b>3500 K</b>	5556 lm	6590 lm	8215 lm
<b>4000 K</b>	5104 lm	5963 lm	7211 lm



# 2

## HERCULIS

**SMALL HELPERS, BIG EFFECT.**

**THE HERCULIS SHOWCASE LUMINAIRES PUT SMALL OBJECTS INTO THE LIMELIGHT.**

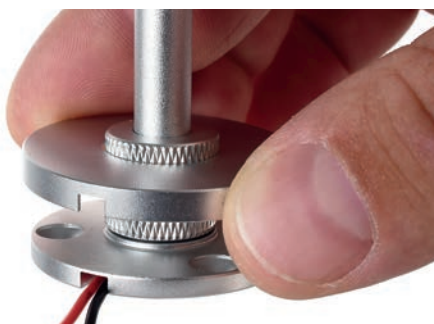
PRODUCT INNOVATIONS

A showcase serves only one purpose: to display its contents. In order for this to succeed in the best possible way, it needs the appropriate illumination of this shop-within-a-shop. With our new HERCULIS display luminaires, we have dedicated ourselves to precisely this goal - and very quickly realised that the almost endless variety of showcase shapes and design options calls for flexible and specialised luminaires to reach every corner of a display case.

Common to all HERCULIS display luminaires is the high-quality aluminium housing, which does not devalue even luxury products. In addition, the luminaire head with its 40° beam angle can be freely rotated and swivelled in any direction.



product video



### FLEXIBLY ADAPTABLE

Showcases and display windows are dynamic presentation modules - this is true in the shop as well as at home. In order to quickly and easily adapt the lighting to new content and a new design if required, HERCULIS luminaires feature intelligent cable routing as well as a ready-to-plug-in system for convenient surface and recessed mounting.

## THE SERIES AT A GLANCE

### HERCULIS SMALL

The SMALL rises 15 centimetres in height and is equally suitable for surface and recessed mounting. The rotatable and swivelling luminaire head ensures that the high light output is precisely aligned with the exhibit.

#### *Quick facts:*

- optimised design for showcases and showcases
- high performance despite compact design
- ready-to-plug-in system
- surface and recessed mounting thanks to intelligent cable routing
- rotatable and swivelling head
- die-cast aluminium
- dimensions: H x Ø: 150 x 39 mm
- colour: black, silver

### HERCULIS BIG

Those who want to reach higher or aim for a more wide-area illumination choose the BIG instead of the SMALL. With a height of 25 centimetres, larger showcases offer even more opportunities to showcase products and exhibits.

#### *Quick facts:*

- optimised design for showcases and showcases
- high performance despite compact design
- ready-to-plug-in system
- surface and recessed mounting thanks to intelligent cable routing
- rotatable and swivelling head
- die-cast aluminium
- dimensions: H x Ø: 250 x 39 mm
- colour: black, silver





### HERCULIS DOUBLE

As the name suggests, the DOUBLE has two luminaire heads at a height of 20 centimetres. Each luminaire head can be individually rotated and swivelled, thus enabling precise lighting design with which details can be highlighted in a natural way.

#### Quick facts:

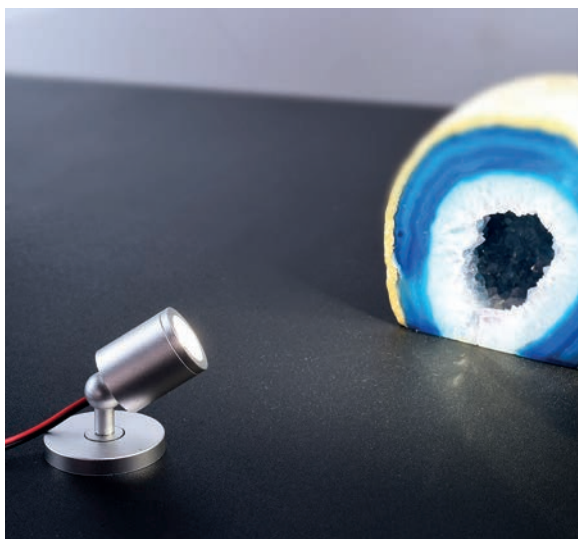
- optimised design for showcases and showcases
- high performance despite compact design
- ready-to-plug-in system
- surface and recessed mounting thanks to intelligent cable routing
- rotatable and swivelling head
- die-cast aluminium
- dimensions: H x Ø: 200 x 39 mm
- colour: black, silver

### HERCULIS TRIPLE

You need even more? With TRIPLE you are even more flexible and have access to three freely adjustable luminaire heads per luminaire. In this way, clever placement also reduces the mounting and cabling effort around the showcase.

#### Quick facts:

- optimised design for showcases and showcases
- high performance despite compact design
- ready-to-plug-in system
- surface and recessed mounting thanks to intelligent cable routing
- rotatable and swivelling head
- die-cast aluminium
- dimensions: H x Ø: 250 x 39 mm
- colour: black, silver



## HERCULIS MAGNETIC

The smallest and most flexible HERCULIS luminaire. Thanks to its magnetic attachment, the MAGNETIC can be quickly and easily aligned and repositioned in showcases and showcases. The magnetic luminaire, which is only a few centimetres in size, is available in either 3,000 or 4,000 K and has a great effect even in the smallest of spaces.

### *Quick facts:*

- optimised design for showcases and showcases
- high performance despite compact design
- ready-to-plug-in system
- flexible alignment thanks to magnetic fastening
- die-cast aluminium
- dimensions: H x Ø: 42 x 31 mm
- colour: black, silver



### *typical applications*

- retail shops
- gastronomy & hotel industry
- museum & exhibitions
- private living

# ADHARA

## A TABLE LAMP CLASSIC, REINTERPRETED FOR MODERN REQUIREMENTS.

The Anglepoise lamp from the 1930s is THE desk classic par excellence and is considered the most important industrial lamp of all time. With the ADHARA, we also pay homage to the versatile adjustable cult lamp. Made of aluminium, the ADHARA impresses with its classic lines, state-of-the-art materials and high flexibility. Thanks to the three joints, the ADHARA can be optimally adjusted to any situation. For those who like it even more reduced, the ADHARA SMALL has two joints and more luminosity. Both models have a touch sensor for comfortable dimming. Whether in the executive office or on the desk in the children's room - ADHARA cuts an excellent figure everywhere.

### *Quick facts: ADHARA*

- type: table lamp
- flexibly adjustable via two or three joints
- 3-stage dimmable via touch sensor
- material: aluminium
- luminous flux: 800 lm  
(ADHARA SMALL) / 640 lm
- light colour: 3,000 K
- colours: white, silver, black





### *typical applications*

- office
- reception
- library

▲ ADHARA:  
timeless design for every desk,  
modern light for every application.



### **THE ANGLEPOISE 1227**

The Anglepoise 1227 was designed by the English industrial designer George Carwardine (1887-1948) as a flexible work lamp. Nature served as a model, more precisely: the the musculoskeletal system of the human arm. The "joints" are three springs act as "joints", with the help of which the Anglepoise is kept in balance. To this day, the desk lamp has lost none of its iconic design effect and served, among others, the Pixar animation studios as a source of ideas for the no less famous Luxo Jr. lamp.

# 2

## EVENT PANEL

**LED PANELS PROVIDE WIDE-AREA LIGHT FROM ABOVE.  
OUR EVENT PANEL CAN DO THIS TOO - AND MUCH MORE...**

The EVENT PANEL is a flexible LED RGBW panel that cuts a particularly slim figure with its transparent surface - regardless of whether you hang it from the ceiling as a pendant luminaire to illuminate areas over a wide area or lean it upright against the wall as a self-illuminating design element. In combination with the diverse accessory options (see right), there are hardly any limits to your design ideas.

PRODUCT INNOVATIONS



### *typical applications*

- office/workplace
- hotel
- Fitness studio
- event



## Quick facts: *EVENT PANEL*

- type: LED panel, pendant luminaire
- adjustable light colour
- aluminium frame
- dimensions L x W x H: 1195 x 295 x 14 mm
- various accessories: Power supply unit, RF controller RGB+W, OLED dimmer

## INTERESTING ACCESSORIES

### RF-CONTROLLER SET RGB+WHITE

With the combination of RF controller (2.4 GHz) and remote control (also suitable for wall mounting), you control LED EVENT PANELS and other LED luminaires in RGB and white. Besides the separate control of the R, G, B and white channels, you can also choose from 12 effect programmes are available.



### ART 4 DMX-CONTROLLER

The ART 4 control unit is a DMX touch panel for playing back and editing colour programmes especially for RGB or RGBW end units. Up to 4 moods and up to 4 scenes can be stored and recalled. As a design element, the ART 4 control blends ideally into the surroundings and is therefore suitable for both commercial and private applications.



### DALI LED PWM-DIMMER 4 CHANNEL

The 4-channel dimmer was designed for controlling RGBW stripes, but is equally suitable for the RGB+W channels of the LED EVENT PANEL. Dimming takes place via the DALI bus according to IEC 62386.



### QUASAR PWM-EASY

The small module is installed directly at the power supply unit or in a distribution box and controls all common 1-4 channel LED stripes and luminaires that are operated with a voltage of 12V, 24V or 48V and controlled by means of common PWM control. Preconfigured scenes and programmes are available for selection. Furthermore, you have the option of controlling all basic and additional functions via the free QUASAR app (iOS/Android). Control has never been smarter!



2

PRODUCT INNOVATIONS

# MADERA

A MODERN LUMINAIRE SERIES FOR RESPONSIBLE TIMES.  
GRADE A OAK WOOD AND FSC CERTIFIED.



The MADERA series comprises modern wooden luminaires made of certified European oak wood of grade A. With their mix of modern design and natural appearance, the pendant-, ceiling-, wall- and table/standing luminaires of the MADERA series impress in private living areas as well as in hotels, restaurants and many other environments. The noble MADERA luminaires distribute their powerful warm white light in any room, while also cutting an excellent figure as functional and high-quality lighting in reception areas and more.



## THE SERIES AT A GLANCE

### MADERA PENDANT LUMINAIRE

A piece of nature above your heads. The new MADERA pendant luminaire descends elegantly and discreetly from the ceiling and illuminates tables, kitchen units and work-places in a warm white light. Depending on your needs, the pendant luminaire's brightness can be comfortably and continuously adjusted via the touch sensor integrated into the side of the luminaire and thus adapted to your desired mood.

#### *Quick facts:*

- modern, exclusive mix of materials (aluminium & wood)
- European oak wood of quality class A
- FSC-certified raw material
- sustainable packaging
- infinitely dimmable via touch sensor
- max. suspension: 1,000 mm

### MADERA CEILING LIGHT

With its beam angle of 120°, the MADERA luminaire distributes its light via two lamps evenly throughout the room. However, it would be a waste if guests' gaze did not turn upwards, because the MADERA is itself a piece of jewellery - and sustainable to boot.

#### *Quick facts:*

- modern, exclusive mix of materials (aluminium & wood)
- European oak wood of quality class A
- FSC-certified raw material
- sustainable packaging
- luminous flux: 1,120 lm, warm white



**MADERA WALL-MOUNTED LUMINAIRE**

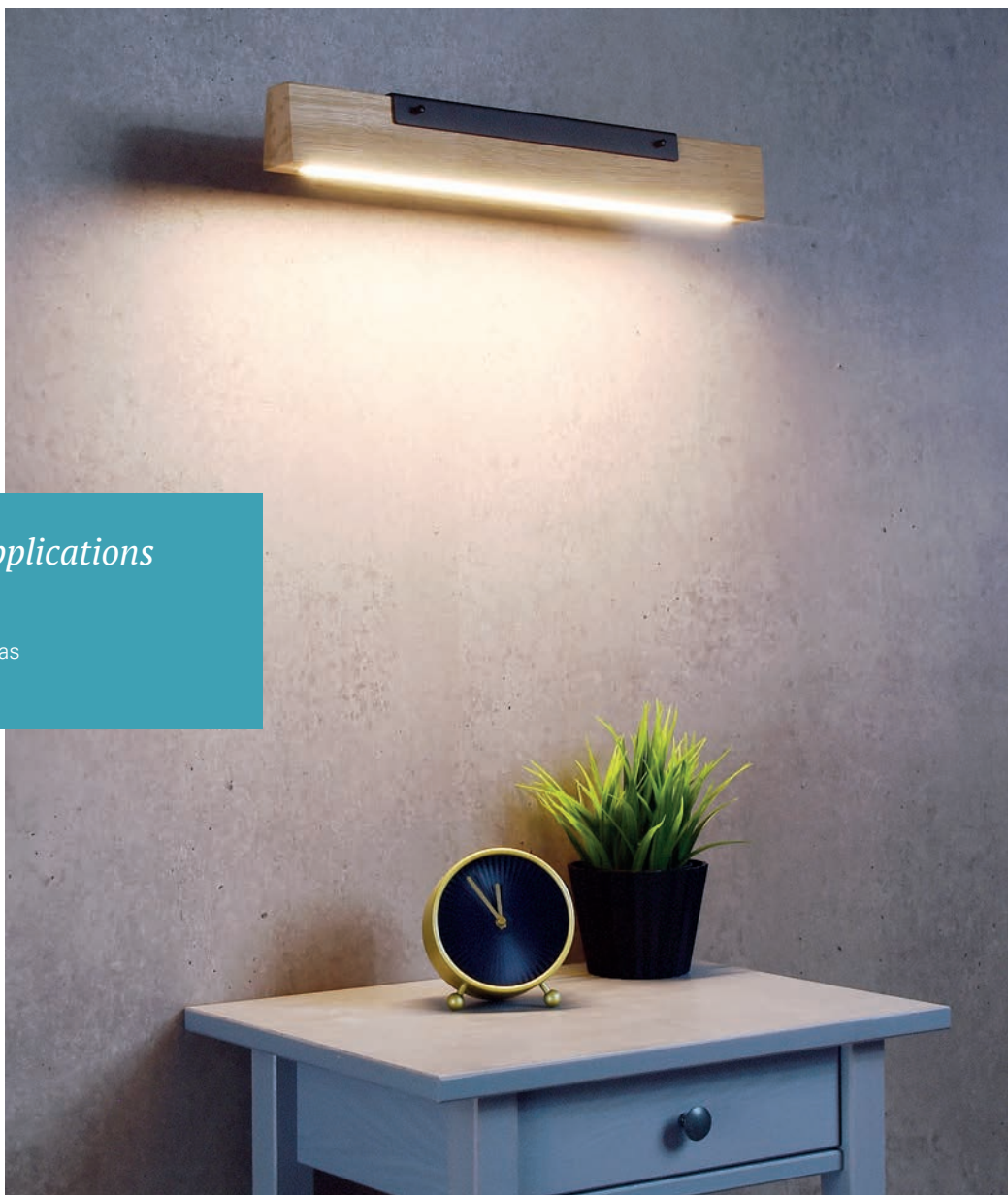
The ideal luminaire for modern boutique hotels that value exclusivity and sustainability. We already see the MADERA to the left and right of hotel beds as well as in hotel corridors, because the powerful light is bright enough for safe illumination and can also be turned down for cosy hours thanks to the integrated dimmer.

*Quick facts:*

- modern, exclusive mix of materials (aluminium & wood)
- European oak wood of quality class A
- FSC-certified raw material
- sustainable packaging
- luminous flux: 560 lm, warm white

*typical applications*

- hotel
- restaurant
- reception areas
- private living

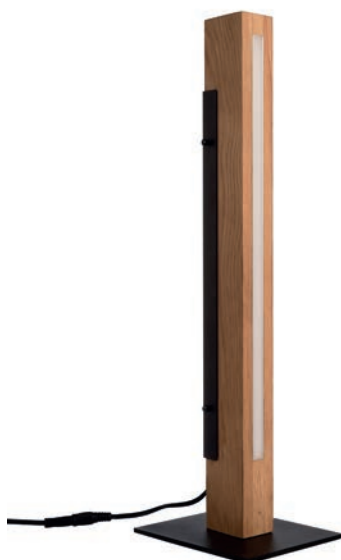


## MADERA TABLE AND FLOOR LAMP

Whether as a cosy, dimmed reading light next to the wing chair, as a work light on the desk or as an elegant design luminaire at corporate events - the table and floor luminaires in the MADERA series are true all-rounders and, thanks to infinitely variable brightness control, are particularly flexible in use - admiring glances included.

### *Quick facts:*

- modern, exclusive mix of materials (aluminium & wood)
- European oak wood of quality class A
- FSC-certified raw material
- sustainable packaging
- height table lamp: 510 mm
- Height floor lamp: 1400 mm



### **FSC CERTIFICATION**

The international FSC certificate is awarded by the Forest Stewardship Council and designates products whose wood materials can be identified at any time in the course of processing up to the finished end product. To ensure this, all companies that process FSC materials within a product chain must be certified according to the FSC standards - from the forestry operation to the final assembly. Only then can a product be labelled as FSC-certified with the FSC mark at the end of the production process.



# OUR VIRTUAL WORLD

## DID YOU ALREADY KNOW? YOU CAN NOW ALSO VISIT OUR NEW SHOWROOM VIRTUALLY.

A well-stocked and well thought-out showroom is intended to inform, substantiate and inspire: to inform about products that were previously only known from the print or online catalogue; to substantiate for the purpose of purchase decisions and current projects; to inspire new ideas that will lead to new projects in the future. online catalogue; to concretise for the purpose of purchase decisions and current projects; to inspire new ideas that will lead to new projects in the future. We took all this into account when our new showroom in Karlsbad became reality step by step. Now there is a second, virtual reality - photorealistic in 3D. We are not saying that our virtual showroom makes the on-site visit obsolete, but there is not much you can't do online ...

### **This is how you navigate through the virtual DEKO-LIGHT showroom:**

- You can move freely around the showroom using the mouse cursor. Simply click on a product, a surface or on the floor to move to the desired position. Hold down the left mouse button to look around and in all directions.
- On the floor you will find preset waypoints that will guide you to the individual product areas and exhibition spaces. Click on one of the markers to keep the perfect viewing angle at all times.
- Many products are marked with a blue i-symbol. Move the mouse over the symbol to see the product name. Clicking on the symbol will take you to the corresponding product page in our online shop.
- Some products and categories also have an explanatory video. You can play the video in a pop-up window directly in the showroom by clicking on the play symbol.
- Be sure to also take a look at the open meeting room. Here you can find our current catalogues "Linear Light", "Commercial Light" as well as the DEKO-LIGHT main catalogue 2021 for online viewing and as a PDF download.

# 3

COMPANY



## PLEASE ENTER

The virtual showroom is available online is of course available to you around the clock. You can find the entrance on our home page at [deko-light.com](https://deko-light.com) or via the QR code below.



showroom





### SMART CONTROL

Even on site you do not have to do without digital conveniences. We have networked our showroom via our QUASAR smart control system and can control and configure the individual areas of the showroom according to your wishes via a tablet.



### YOUR VISIT TO THE SHOWROOM

You would like to experience our new showroom not only virtually, but on site? After making an appointment with your sales contact, the showroom is available to you for sampling during our general opening hours - also together with your end customer if you wish.

# WIBU-SYSTEMS

**THIS SUMMER, THE WIBU-SYSTEMS COMPANY MOVED INTO ITS NEW HEADQUARTERS IN KARLSRUHE. THE LIGHTING OF THE HUGE NEW BUILDING WAS DONE ENTIRELY WITH DEKO-LIGHT LIGHTING TECHNOLOGY.**



Karlsruhe is a nationally renowned IT location. The first computer science faculty was founded here in 1972 and the first e-mail in Germany was received here in 1984. In 2021, around 4,400 digital companies are based in Karlsruhe - and with WIBU-Systems, a real hidden champion in the areas of software protection and software licensing, which are used worldwide and are used in the background by millions of people every day. Founded in 1989, the company has always remained loyal to Karlsruhe as a digital location - and in 2021 moved into a newly built, ultra-modern company complex, which is equipped with luminaires and linear light from DEKO-LIGHT from the foyer to the private flat of Oliver Winzenried, co-founder and CEO of WIBU-Systems AG.

The building, which was completed in just two years, comprises two buildings, each with 8,400 m<sup>2</sup> of gross floor space: the WIBU-Systems headquarters with offices, production, warehouse and logistics, company restaurant and more, as well as the neighbouring House of IT Security, which accommodates numerous companies, researchers and start-ups from the IT security sector in its coworking spaces and permanently rented units.



## ground floor

Anyone entering the company building of WIBU-Systems through the revolving doors will inevitably catch sight of the floor-to-ceiling pixel wall, for whose planning and control DEKO-LIGHT was responsible. The individual customer solution also required a customised frame, which was created by Industrie und Außenwerbung Luthle GmbH. Around the corner is another custom solution: to visualise the status of the two lifts, LED stripes were integrated into the aluminium door frame to the left and right of each lift door. These stripes light up in either orange or turquoise to show the position and direction of movement. The lobby and foyer area with reception counter is illuminated by black NEX profiles as pendant luminaires in different lengths and visually picked up by the NEX profiles in the wooden slatted rear wall.

In the warehouse as well as in the underground car park, the responsible electrical engineering service provider Prinzing installed the TRI PROOF IP65 surface-mounted ceiling luminaires, which with their neutral white light colour provide ideal functional working light. Also on the ground floor is the largest conference room of the building with capacity for up to 28 people with a table or 80 people in rows. Here, too, NEX profiles are used as pendant ceiling luminaires to match the design of the foyer and harmonise with the black accents in the room, including the wooden panelling at the head end. COB 170 recessed ceiling luminaires provide additional light.





#### office spaces

The office areas in the WIBU-Systems building extend over several floors and rely entirely on the OFFICE series from DEKO-LIGHT. In addition to the OFFICE Three DALI 2.0 pendant luminaires, the OFFICE Three Motion free-standing luminaires provide glare-free light ( $UGR < 6$ ) on desks and other work surfaces and enable the lighting to be adjusted to the respective work or daylight situation via an integrated daylight sensor or DALI driver (more information on the use of DALI can be found in the extra box "DALI makes it possible"). Another highlight of the OFFICE Three pendant luminaires: they radiate downwards and upwards, creating both precise task lighting and ambient light and depth. Some of the office areas merge into open-plan working and lounge areas. Here - as well as in the wide corridors - the D-LINE 3-phase track system provides flexible lighting, consisting of white surface-mounted tracks and LUNA 30 track spotlights with dimmable LED and  $40^\circ$  beam angle.

#### DALI MAKES IT POSSIBLE

As a highly modern and sustainable corporate building, the WIBU-Systems building has a complete, intelligent bus control system as well as state-of-the-art building technology with WAGO energy management, PLCs and flexroom controllers that control the blinds, luminaires and standard luminaires as well as the heating or cooling and the air quality volume flow controller depending on the weather station, DALI presence detectors and constant light control, CO2 detectors, enOcean room control units. For this reason, all integrated luminaires had to be DALI-compatible.



### staircases

The stairwells are illuminated with a mixture of warm white surface-mounted and recessed ceiling spotlights as well as linear Lighting solutions. In addition to the UNI II surface-mounted luminaires, which can shine both downwards and - thanks to the two-part, hinged body - at an angle, the UNI ceiling-mounted luminaires provide continuous illumination on the mezzanine floors. The 24V LED stripes in 3,000K version integrated vertically into the walls visualise the upward or downward architecture of the open staircase and create dynamics and a pleasant atmosphere with simple means.

### company restaurant

The company restaurant by WIBU-Systems is located on the top floor, which is designed as a staggered storey and also houses the roof terrace and the private flat of Oliver Winzenried. Prinzing Elektrotechnik used a mixture of NEX profiles as surface-mounted ceiling luminaires, D-LINE tracks with Luna 30 spotlights for the serving and buffet areas, and SATURN recessed ceiling luminaires for the restaurant, which has floor-to-ceiling glazing.



# 4

## LIGHTING SOLUTIONS



### private flat

The private flat of board member Oliver Winzenried is a prime example of simple, modern elegance: clear lines, plenty of daylight and few, but effective architectural accents, which are optimally staged by the individual DEKO-LIGHT series. In addition to the linear lighting solutions in the living area and bathroom (here the fully encapsulated D FLEX LINE series with IP68 certification

provides homogeneous, spot-free illumination), two Electra pendant luminaires with their lampshades of mirrored smoked glass above the kitchen unit act as eye-catchers. In the hallway, slender, elongated CETI recessed ceiling luminaires light the way. Further accents are set by the ALWA and BRAHE wall and table luminaires.



## Quick facts: clear separation

The lighting design at WIBU-Systems follows a clear basic concept, which determines the choice of luminaires in the first place: Warm white lighting is used in the foyer, corridors and stairwells as well as in the company restaurant, while the offices and production areas are kept neutral white.

The product overview can be found from page 68 onwards.



### about Wibu Systems

Wibu-Systems is a global technology leader in software licensing. Founded in 1989 by Oliver Winzenried and Marcellus Buchheit, the company's mission is to provide the highest level of protection, licensing and security for digital assets and intellectual property in an increasingly connected world. Wibu solutions are used worldwide by software manufacturers and smart device creators who distribute their applications for PCs, mobile devices, embedded systems, controllers and microcontrollers.

### *project participants*

#### **draft:**

Architekturbüro archis  
Architekten + Ingenieure  
[archis.de](http://archis.de)

#### **project development:**

IBA Immobilien  
[iba-heinze.de/kontakt.php](http://iba-heinze.de/kontakt.php)

#### **project management:**

mdbm  
[mdbm-baumanagement.de](http://mdbm-baumanagement.de)

#### **general contractor:**

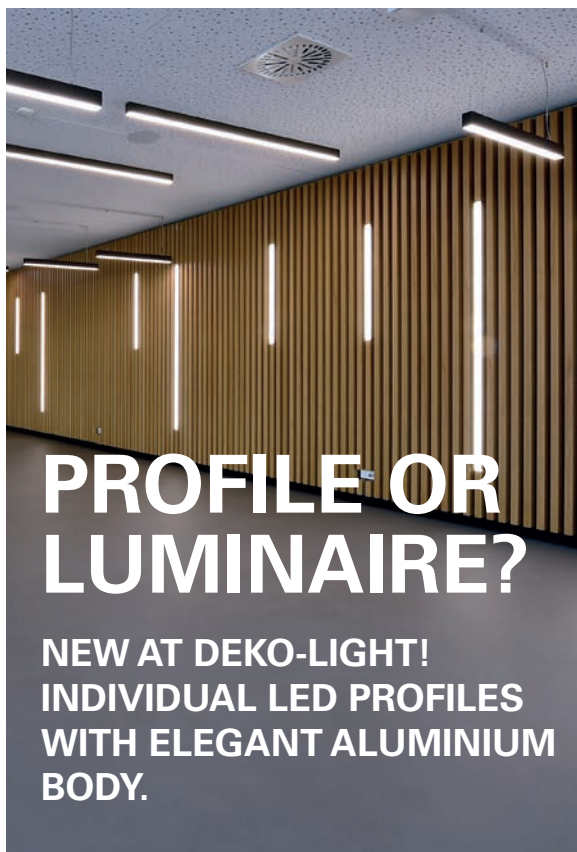
Wolff+Müller  
[wolff-mueller.de](http://wolff-mueller.de)

#### **electrical installation:**

Prinzing Elektrotechnik  
[prinzing-elektro.de](http://prinzing-elektro.de)

# 4

LIGHTING SOLUTIONS



## PROFILE OR LUMINAIRE?

**NEW AT DEKO-LIGHT!  
INDIVIDUAL LED PROFILES  
WITH ELEGANT ALUMINIUM  
BODY.**



A continuous row, a profile or a luminaire? With the new NEX profiles, you get a complete package as an individual lighting solution for ceilings and walls. Whether as a recessed variant, surface-mounted ceiling luminaire or pendant luminaire as well as for wall mounting: the NEX profiles are more than just another combination of profile and LED stripe. You have already gained a first impression of the elegance and sophistication on the previous pages: at WIBU-Systems (from page 40) in Karlsruhe, the NEX pendant luminaires in black colour version provide a modern look and atmosphere in the foyer of the new company building, among other places.

### INDIVIDUAL SOLUTION

A NEX profile luminaire always has the same structure - and yet it is individual. Inside sits a profile with LED illumination in 3,000 or 4,000 K. The surrounding luminaire body is made of extruded aluminium and has an anodised or powder-coated surface. The length, equipment as well as the design of the body can be individually specified, because the NEX series is an individual lighting solution and can be requested from our project manager Andre Ammersken.



# ALL-ROUND CARE

**FROM NOW ON ANDRE AMMERSKEN WILL TAKE CARE  
WILL TAKE CARE OF YOUR SPECIFIC PROJECT ENQUIRIES.  
TOGETHER WE WILL FIND THE IDEAL SOLUTION!**

Do you have a specific project and need a contact person who supports you in all phases with experience, know-how and product knowledge? Do your customer's requirements demand a special solution that is not available off the shelf? Then contact our field service Andre Ammersken! As the project manager at DEKO-LIGHT, Andre is your permanent contact person (together with your responsible field service) and, if required, will accompany you from the initial planning to the construction meeting to the final acceptance of an installation.

Andre is a true lighting professional who knows the requirements, needs and wishes of his customers and can look at them from different perspectives. Before joining DEKO-LIGHT, he was the managing director of mehrLICHT and was responsible for hundreds of projects in the fields of LED lighting and video technology. At DEKO-LIGHT, customers benefit from Andre's precise cost/benefit calculations when converting to LED systems, as well as from his comprehensive planning and visualisation expertise in DIALux & Video.

Andre Ammersken  
Sales management projects  
T +49 7248 9271 500  
M +49 171 313 92 72  
[a.ammersken@deko-light.com](mailto:a.ammersken@deko-light.com)



# 4

LIGHTING SOLUTIONS

## RUN ON LIGHT

IN THE WALDBRONN ICE RINK, SKATING FANS CAN SKATE ACROSS AN ICE SURFACE WITH INTEGRATED LED STRIPES FROM DEKO-LIGHT.





The Waldbronn ice rink offers a total of 2,700 m<sup>2</sup> of ice skating surface. While the large ice rink is primarily used for school and club sports - ice hockey, figure skating and more - the focus in the neighbouring smaller rink, connected by a trafficable passageway, is clearly on family fun and ice parties. It's not only on Fridays and Saturdays, when the house DJ fully exploits the permanently installed lighting and sound system, that a disco atmosphere prevails. This is already revealed by the first glance at the ice surface, which is covered with long, colourful LED stripes. A closer look also reveals that the central EISTREFF lettering and the two logos of the sponsor Volksbank have been formed in the ice using LED stripes.

A total of 300 metres of LED stripes were installed for the ice rink. While around 140 metres of LED stripes of the type 5050-60-24V-RGB were used along the circumferential bands, IC LED stripes were used for the light bands running outwards in a star shape. With their individually controllable pixels, these not only provide simple colour changes, but also impress with running lights, strobe-like effects and more. Four RGBW wallwashers from the CAPH series add to the party atmosphere. In the remaining rooms of the ice rink - from the changing room to the entrance area - various DEKO-LIGHT LED panels and recessed spotlights are also used.

You will find the production overview on page 72.



#### ENDURANCE TEST IN EXTREME ENVIRONMENT

Under the surface of the ice layer, the temperature is -7° Celsius - for the entire skating season. In addition, the IC LED stripes are exposed to high stress due to the vibrations caused by the ice skaters. This has to be withstood, because it is not possible to replace defective stripes during the season.



### CONVENTIONAL LIGHTING

When the party is going on next door, things are much more disciplined in the large ice rink is much more disciplined. Here, skating and training take place in functional white light. For this purpose, 45 ALUDRA pendant luminaires, each with 160 W, are used as universal low-lights from a great height to provide powerful ambient lighting for the ice surface. With their IK10 impact resistance class, even a stray ice hockey puck will not cause the ALUDRA to break out in a sweat...

# 5 AN ALL ROUND SUCCESSFUL DAY

FORUM

**THE DEKO-LIGHT IN-HOUSE EXHIBITION  
ON 17TH SEPTEMBER WAS A COMPLETE SUCCESS.  
READ AND SEE FOR YOURSELF!**

After we had to postpone the 2021 in-house exhibition originally planned for spring due to the pandemic, the time finally came on 17th September: more than 300 guests - partners, customers and friends of our company - found their way to Karlsbad and spent an informative and entertaining day in the sign of light in the best weather. We would like to take this opportunity to thank all those involved in making the DEKO-LIGHT 2021 in-house exhibition an unforgettable day!



aftermovie



*»A very informative day and a nice evening.  
Thank you very much! Until the next fair ...«*

Dietmar Kohlars // [sk-elektronik.com](mailto:sk-elektronik.com)

*»Thank you very much for the nice day I had in your house. The in-house exhibition was nice and informative. I was able to make interesting contacts and had a lot of fun. The catering was excellent.«*

Jeanne Lymm // [carl-mettler.lu](mailto:carl-mettler.lu) // [bruder-gruppe.de](mailto:bruder-gruppe.de)

*»The organisation and attractive presentation of the products as well as the interesting workshops were really impressive. The supporting programme with excellent catering, live band and the star guest Markus Becker in the evening were almost unbeatable!«*

Dieter Schilling // schilling-messebau.de

*»The new showroom has become really beautiful, offers many interesting novelties and shows the development of the DEKO-LIGHT company.«*

Roman Walch // unielektro.de



## **SAVE THE DATE: DEKO-LIGHT IN-HOUSE EXHIBITION 2023**

Every (2) years again:

2022, we welcome our partners and customers from 13th to 18th March at Light + Building in Frankfurt am Main. Nevertheless, you can already mark the date for the next DEKO-LIGHT in-house exhibition in red in your in your calendar:

**DEKO-LIGHT in-house exhibition 2023: 16th June 2023**

# 5

FORUM

## DID YOU KNOW?

LINEAR RACE - WE ARE CURIOUS,  
WHICH PRODUCT CATEGORY WILL BE AHEAD BY THE  
END OF THE YEAR.

Length of all profiles,  
stripes and covers  
sold to date from 2021.

143.542 m

133.609 m

140.606 m

# MY FAVOURITE DEKO-LIGHT PRODUCT

THE PEOPLE AT DEKO-LIGHT ARE NOT ONLY LIGHTING PROFESSIONALS, BUT ALSO REAL FANS OF OUR LIGHTING SOLUTIONS. IN THIS ISSUE, TECHNOLOGY EXPERT MARC DICKER REVEALS HIS FAVOURITE PRODUCT FROM THE DEKO-LIGHT PORTFOLIO.



## My favourite DEKO-LIGHT product is...

...not so easy to find, because there are several products to choose from. However, I decide on the D-Line track system.

It is so special because...

...anyone who has ever installed a conductor rail system on a suspended grid ceiling knows the problems with setting the fixing points. Often it is very complicated and time-consuming to work with threaded rods or wooden substructures. With our quick mounting clamp for grid ceilings from the D-LINE accessories range makes this a thing of the past. Believe me: you have never mounted a conductor rail easier, faster and safer (the clamp is also secured against accidental unlocking)!

If there should be a successor, I wish for...

A perfect product does not need a successor...

For the next SpotOn issue I nominate...

Wolfgang Scafati from Sales





# LED LIGHTS & POWER SUPPLIES: SWITCHING, DIMMING, CONTROLLING

**ON THE FOLLOWING PAGES, OUR TECHNOLOGY EXPERT MARC DICKER PROVIDES VALUABLE TIPS ON THE SELECTION, INSTALLATION AND PITFALLS WHEN OPERATING LED LIGHTS AND POWER SUPPLIES.**

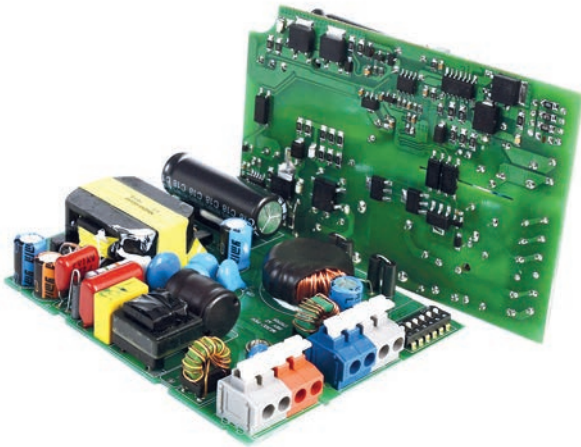
Selecting and installing operating and control components for LED luminaires can be a challenge, depending on how and where they are operated. From dimmers and motion detectors to electronic switching relays and timers to smart home controls - what should you look out for and what problems can occur with LED luminaires? How do you recognise this and how can it be remedied?

You should be aware of this in advance: Due to the constant development of light sources, their technical design has also changed. What used to be a simple tungsten wire is now a highly efficient LED that illuminates our rooms by means of a POWER SUPPLY or upstream electronics. The differences are particularly noticeable in modern POWER SUPPLIES. These have a large number of built-in electronic components and are confronted with both increased demands and regulations (energy efficiency, flicker, etc.). We are therefore dealing with a type of load that has to be treated and controlled completely differently.

## LOAD TYPES & CONSUMERS

What load types of different consumers are there? Depending on the connected light source we distinguish between **R**, **L** and **C**:

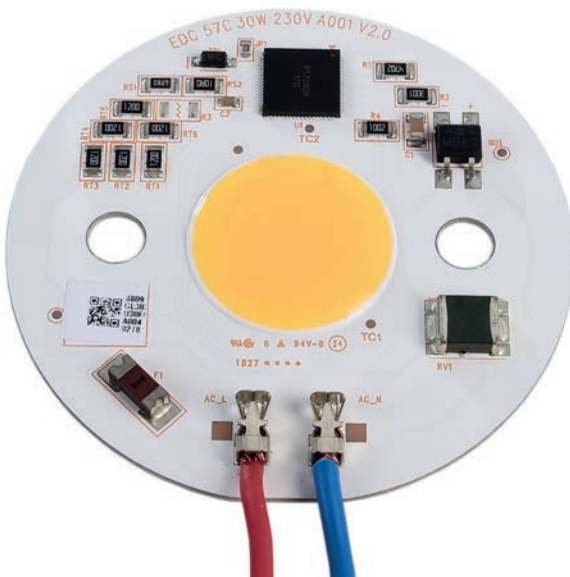
- **R** (=resistor) applies to ohmic consumers, such as a simple incandescent lamp without integrated electronics
- **L** (=induction, after the physicist Emil Lenz) applies to inductive loads, such as a wound coil transformer. With this, the voltage or power rises briefly when switched off (induction voltage), which is why inductive loads may only be used with phase-angle dimmers.
- **C** (=capacity, lat. Capacitas) applies to capacitive loads such as power supply units, power supply units, ballasts and switched-mode power supply units. Here, the voltage rises sharply for a short time when switching on, which is why phase-cut dimmers usually have to be used.



### structure of LED luminaires

In principle, an LED can neither be operated directly with alternating voltage (AC) nor with 230V mains voltage. An upstream POWER SUPPLY is always required. The different designs of POWER SUPPLIES result from the electronic structure, the design and the resulting space available in the luminaire. We roughly distinguish between separately installed power supply units and power supply units that are installed directly on the LED board.

**IMPORTANT:** An LED luminaire always represents a C-load - no matter where the power supply unit is installed!



▲ LED luminaire with power supply unit on LED board

▲ LED light with separate power supply unit

### switching and dimming LED luminaires

In contrast to conventional R loads, you must take into account the above-mentioned properties of C loads when planning and installing lighting and electrical systems - both for new installations and for conversions. This applies not only to circuit breakers and the cable infrastructure, but also to all switching and dimming components, e.g.:

- motion detectors / twilight switches
- timers / staircase light timers
- relays (especially electronic relays)
- dimmers
- switching and dimming actuators (KNX, DALI)
- smart home components
- ...any electrical switch



### consequences & dangers

What consequences can occur when operating switching and dimming components that are not suitable or only partially suitable? What dangers arise for technology and people? A brief overview:

- dramatic reduction in the service life of the luminaire and/or the control components
- permanent or irregular flickering, flickering or flashing of the LED
- Noise generation (chirping, humming) at the luminaire or the upstream component
- excessive heat generation, odour pollution and, in the worst case, fire hazard

## summary

Let's summarise the four most important findings on operating, switching and dimming LED fixtures:

- You cannot find a clear indication of suitability for LED/C components with corresponding power? Then you should assume that they are NOT suitable. To be on the safe side, ask the manufacturer explicitly.
- If several luminaires show a defect within a short period of time, you should not only replace the luminaires, but check all components involved for general suitability and possible problems with usable power and quantity.
- Be aware that due to a longer pre-damage period, the remaining luminaires may gradually become defective even after a problem has been eliminated.
- Are you planning to convert an existing installation to LED? Then be sure to check ALL components involved (dimmers, motion detectors, smart home, relays, timers, etc.) for suitability and replace them if in doubt.

### Technische Daten

Ausführung	Bewegungsmelder
Abmessungen (L x B x H)	56 x 76 x 120 mm
Netzanschluss	230 V / 50 Hz
Sensortechnologie	Passiv Infrarot
Anwendung, Ort	Innenbereich, Außenbereich
Montageort	Wand, Ecke
Montageart	Aufputz
Montagehöhe	1,80 – 4,00 m
Reichweite Radial	$r = 1.5 \text{ m } (4 \text{ m}^2) / r = 3 \text{ m } (14 \text{ m}^2)$
Reichweite Tangential	$r = 5 \text{ m } (39 \text{ m}^2) / r = 12 \text{ m } (226 \text{ m}^2)$
Erfassungswinkel	180 °
Öffnungswinkel	90 °
Schaltzonen	504 Schaltzonen
optimale Montagehöhe	2 m
Mechanische Skalierbarkeit	Nein
Unterkriechschutz	Ja
segmentweise Ausblendung	Ja
Elektronische Skalierbarkeit	Nein
Dämmerungseinstellung Teach	Nein
Dämmerungseinstellung	2 – 2000 lx
Zeiteinstellung	5 s – 15 Min.
Leistung	1000 W

Schaltleistung	Leistung	1000 W
Schaltleistung	Schaltausgang 1, Ohmsch	1000 W
Schaltleistung	Schaltausgang 1, Anzahl LED/Leuchtstofflampen	6 stk.

Leuchtstofflampen EVG	1000 W
Leuchtstofflampen unkompensiert	500 VA
Leuchtstofflampen reihenkompensiert	406 VA
Leuchtstofflampen parallelkompensiert	406 VA
Schaltausgang 1, Niedervolt Halogenlampen	1000 VA
LED Lampen	16 W
Kapazitiv	LED Lampen > 2 W
Konstant	LED Lampen > 8 W
Grundlich	Kapazitive Belastung in µF
Einstellu	Konstantlichtregelung
Mit Fern	Nein
Vernetzung	Ja
Art der Vernetzung	Master/Master
Schutzart	IP54
Werkstoff	Kunststoff
Umgebungstemperatur	-20 – 50 °C
Anwendung, Raum	Außenbereich, Hauseingang, Rund ums Haus, Terrasse / Balkon, Hof & Einfahrt
Farbe	Weiß
Farbe, RAL	9010
Herstellergarantie	3 Jahre

### IMPORTANT

It is not only the total power that matters! In this case, despite the specified 1,000 W, you can only connect a maximum of 6 LED lamps, which may also only have a maximum of 16 W each!



## EMERGENCY LIGHT ALMAAZ CONE

**348152** plastic | white | NW | 4500 K | 3 W | IP54  
 L x W x H: 283 x 50 x 187 mm  
 Single battery technology with LiFePO4 battery  
 detection distance 27m | SK II / III with INSiLIA technology  
 Luminance 500cd/m² | autotest function with buzzer  
 rotatable housing for ceiling or wall mounting  
 incl. changeable pictogram set in all directions  
**169,95 €**



## EMERGENCY LIGHT ALMAAZ FLAT

**348151** plastic | white | NW | 4500 K | 3 W | IP54  
 L x W x H: 283 x 50 x 198 mm  
 Single battery technology with LiFePO4 battery  
 detection distance 27m | SK II / III with INSiLIA technology  
 Luminance 500cd/m² | autotest function with buzzer  
 rotatable housing for ceiling or wall mounting  
 incl. changeable pictogram set in all directions  
**245,95 €**



## EMERGENCY LIGHT ALSAFI

**348140** plastic | white | NW | 4500 K | 3 W | IP54  
 L x W x H: 360 x 88 x 118 mm  
 Single battery technology with LiFePO4 battery  
 detection distance 16m | SK II / III with INSiLIA technology  
 Luminance 500cd/m² | autotest function with buzzer  
 cut-outs for pendulum fastening | reflector with hinges  
 suitable for ceiling or wall mounting  
 incl. changeable pictogram set in all directions  
**155,95 €**



## EMERGENCY LIGHT ALMACH FOR THE ILLUMINATION OF CORRIDORS

**731142** plastic | white | NW | 4500 K | 1 W | IP42  
 L x W x H: 192 x 101 x 57 mm  
 Single battery technology with LiFePO4 battery  
 SK II / III with INSiLIA technology | 3h/8h bridging time  
 simple click assembly | rotatable  
**225,95 €**



## EMERGENCY LIGHT ALMACH FOR THE ILLUMINATION OF AREAS

**731143** plastic | white | NW | 4500 K | 1 W | IP42  
 L x W x H: 192 x 101 x 57 mm  
 Single battery technology with LiFePO4 battery  
 SK II / III with INSiLIA technology | 3h/8h bridging time  
 simple click assembly | rotatable  
**225,95 €**



## EMERGENCY LIGHT ALNAIR FOR THE ILLUMINATION OF CORRIDORS

**565325** plastic | white | NW | 4500 K | 1 W | IP42  
 H x Ø: 28 x 78 mm  
 Single battery technology with LiFePO4 battery  
 SK II / III with INSiLIA technology | 3h/8h bridging time  
**239,95 €**



## EMERGENCY LIGHT ALNAIR FOR THE ILLUMINATION OF AREAS

**565326** plastic | white | NW | 4500 K | 1 W | IP42  
 H x Ø: 28 x 78 mm  
 Single battery technology with LiFePO4 battery  
 SK II / III with INSiLIA technology | 3h/8h bridging time  
**239,95 €**



## **D PROFESSION DOWN + POWER SUPPLY TRIAC**

**620107** aluminium | white | NW | 4000 K | 3165 lm | 28 W  
L x W x H: 1177 x 53 x 53 mm | max. suspension: 3000 mm  
dimmable via phase control or phase cut-off  
**329,90 €**

**620110** aluminium | silver | NW | 4000 K | 3165 lm | 28 W  
L x W x H: 1177 x 53 x 53 mm | max. suspension: 3000 mm  
dimmable via phase control or phase cut-off  
**329,90 €**

**620103** aluminium | black | NW | 4000 K | 3165 lm | 28 W  
L x W x H: 1177 x 53 x 53 mm | max. suspension: 3000 mm  
dimmable via phase control or phase cut-off  
**329,90 €**

## **D PROFESSION DOWN + POWER SUPPLY 1-10V**

**620106** aluminium | white | NW | 4000 K | 3165 lm | 28 W  
L x W x H: 1177 x 53 x 53 mm | max. suspension: 3000 mm  
dimmable via 1-10V  
**339,90 €**

**620109** aluminium | silver | NW | 4000 K | 3165 lm | 28 W  
L x W x H: 1177 x 53 x 53 mm | max. suspension: 3000 mm  
dimmable via 1-10V  
**339,90 €**

**620102** aluminium | black | NW | 4000 K | 3165 lm | 28 W  
L x W x H: 1177 x 53 x 53 mm | max. suspension: 3000 mm  
dimmable via 1-10V  
**339,90 €**

## **D PROFESSION DOWN + POWER SUPPLY DALI**

**620105** aluminium | white | NW | 4000 K | 3165 lm | 28 W  
L x W x H: 1177 x 53 x 53 mm | max. suspension: 3000 mm  
dimmable via DALI bus according to IEC 62386 DALI 1.0  
**359,90 €**

**620108** aluminium | silver | NW | 4000 K | 3165 lm | 28 W  
L x W x H: 1177 x 53 x 53 mm | max. suspension: 3000 mm  
dimmable via DALI bus according to IEC 62386 DALI 1.0  
**359,90 €**

**620057** aluminium | black | NW | 4000 K | 3165 lm | 28 W  
L x W x H: 1177 x 53 x 53 mm | max. suspension: 3000 mm  
dimmable via DALI bus according to IEC 62386 DALI 1.0  
**359,90 €**



## **D PROFESSION UP AND DOWN + POWER SUPPLY TRIAC**

**620111** aluminium | white | NW | 4000 K | 7180 lm | 60 W  
L x W x H: 1177 x 53 x 53 mm | max. suspension: 3000 mm  
dimmable via phase control or phase cut-off  
**389,90 €**

**620104** aluminium | silver | NW | 4000 K | 7180 lm | 60 W  
L x W x H: 1177 x 53 x 53 mm | max. suspension: 3000 mm  
dimmable via phase control or phase cut-off  
**389,90 €**

**620112** aluminium | black | NW | 4000 K | 7180 lm | 60 W  
L x W x H: 1177 x 53 x 53 mm | max. suspension: 3000 mm  
dimmable via phase control or phase cut-off  
**389,90 €**

## **D PROFESSION UP AND DOWN + POWER SUPPLY 1-10V**

**620114** aluminium | white | NW | 4000 K | 7180 lm | 60 W  
L x W x H: 1177 x 53 x 53 mm | max. suspension: 3000 mm  
dimmable via 1-10V  
**389,90 €**

**620113** aluminium | silver | NW | 4000 K | 7180 lm | 60 W  
L x W x H: 1177 x 53 x 53 mm | max. suspension: 3000 mm  
dimmable via 1-10V  
**389,90 €**

**620115** aluminium | black | NW | 4000 K | 7180 lm | 60 W  
L x W x H: 1177 x 53 x 53 mm | max. suspension: 3000 mm  
dimmable via 1-10V  
**389,90 €**

## **D PROFESSION UP AND DOWN + POWER SUPPLY DALI**

**620117** aluminium | white | NW | 4000 K | 7180 lm | 60 W  
L x W x H: 1177 x 53 x 53 mm | max. suspension: 3000 mm  
dimmable via DALI bus according to IEC 62386 DALI 1.0  
**419,90 €**

**620116** aluminium | silver | NW | 4000 K | 7180 lm | 60 W  
L x W x H: 1177 x 53 x 53 mm | max. suspension: 3000 mm  
dimmable via DALI bus according to IEC 62386 DALI 1.0  
**419,90 €**

**620118** aluminium | black | NW | 4000 K | 7180 lm | 60 W  
L x W x H: 1177 x 53 x 53 mm | max. suspension: 3000 mm  
dimmable via DALI bus according to IEC 62386 DALI 1.0  
**419,90 €**



## ALTAIS

**348141** ceiling / wall luminaire | plastic | white  
WW/NW/CW | 3000/4000/6000 K | 1260 lm | Ra >85  
12 W | IP54 | IK10 | H x Ø: 48 x 220 mm  
light colour adjustable via dip switch [CCT DIP]  
75.000 switching cycles  
**55,95 €**

**348143** ceiling / wall luminaire | plastic | white  
WW/NW/CW | 3000/4000/6000 K | 1870 lm | Ra >85  
18 W | IP54 | IK10 | H x Ø: 48 x 280 mm  
light colour adjustable via dip switch [CCT DIP]  
75.000 switching cycles  
**67,95 €**

**348145** ceiling / wall luminaire | plastic | white  
WW/NW/CW | 3000/4000/6000 K | 2715 lm | Ra >85  
25 W | IP54 | IK10 | H x Ø: 48 x 330 mm  
light colour adjustable via dip switch [CCT DIP]  
75.000 switching cycles  
**85,95 €**



## ALTAIS MOTION

**348142** ceiling / wall luminaire | plastic | white  
WW/NW/CW | 3000/4000/6000 K | 1260 lm | Ra >85  
12 W | IP54 | IK10 | H x Ø: 48 x 220 mm  
light colour adjustable via dip switch [CCT DIP]  
detection area, daylight sensor and luminous duration  
can be individualised via the remote control  
75.000 switching cycles | incl. motion sensor  
**85,95 €**

**348144** ceiling / wall luminaire | plastic | white  
WW/NW/CW | 3000/4000/6000 K | 1870 lm | Ra >85  
18 W | IP54 | IK10 | H x Ø: 48 x 280 mm  
light colour adjustable via dip switch [CCT DIP]  
detection area, daylight sensor and luminous duration  
can be individualised via the remote control  
75.000 switching cycles | incl. motion sensor  
**99,95 €**

**348146** ceiling / wall luminaire | plastic | white  
WW/NW/CW | 3000/4000/6000 K | 2715 lm | Ra >85  
25 W | IP54 | IK10 | H x Ø: 48 x 330 mm  
light colour adjustable via dip switch [CCT DIP]  
detection area, daylight sensor and luminous duration  
can be individualised via the remote control  
75.000 switching cycles | incl. motion sensor  
**115,95 €**



## ALUDRA 100W

**732138** hall floodlight | aluminium | black  
CW | 5000 K | 15030 lm | Ra >80  
100 W | IP65 | IK10 | H x Ø: 153 x 360 mm  
**269,95 €**



## ALUDRA 160W

**732139** hall floodlight | aluminium | black  
CW | 5000 K | 24450 lm | Ra >80  
160 W | IP65 | IK10 | H x Ø: 165 x 360 mm  
**319,95 €**



## ALUDRA 200W

**732140** hall floodlight | aluminium | black  
CW | 5000 K | 30300 lm | Ra >80  
200 W | IP65 | IK10 | H x Ø: 178 x 405 mm  
**395,95 €**



### ALUDRA 100W DALI

**732141** hall floodlight | aluminium | black  
CW | 5000 K | 15415 lm | Ra >80  
100 W | IP65 | IK10 | H x Ø: 153 x 360 mm  
DALI bus according to IEC 62386 DALI 1.0  
**319,95 €**



### ALUDRA 200W DALI

**732142** hall floodlight | aluminium | black  
CW | 5000 K | 29315 lm | Ra >80  
200 W | IP65 | IK10 | H x Ø: 178 x 405 mm  
DALI bus according to IEC 62386 DALI 1.0  
**475,95 €**



### DRACONIS

**620122** pendant lamp | aluminium diecast  
Traffic white RAL 9016 | WW/NW | 2700/3500/4000 K  
8215 lm | Ra >80 | 45/55/72 W | L x W x H: 578 x 189 x 71 mm  
light colour and power adjustable via CCT dip switch  
**369,95 €**

**620121** pendant lamp | aluminium diecast  
White aluminium RAL 9006 | WW/NW | 2700/3500/4000 K  
8215 lm | Ra >80 | 45/55/72 W | L x W x H: 578 x 189 x 71 mm  
light colour and power adjustable via CCT dip switch  
**369,95 €**



### DRACONIS

**620120** power rail spotlight | aluminium diecast  
Traffic white RAL 9016 | WW/NW | 2700/3500/4000 K  
8215 lm | Ra >80 | 45/55/72 W | L x W x H: 578 x 189 x 129 mm  
light colour and power adjustable via CCT dip switch  
**339,95 €**

**620119** power rail spotlight | aluminium diecast  
White aluminium RAL 9006 | WW/NW | 2700/3500/4000 K  
8215 lm | Ra >80 | 45/55/72 W | L x W x H: 578 x 189 x 129 mm  
light colour and power adjustable via CCT dip switch  
**339,95 €**



### DRACONIS

**348128** ceiling light | aluminium diecast  
Traffic white RAL 9016 | WW/NW | 2700/3500/4000 K  
8215 lm | Ra >80 | 45/55/72 W | L x W x H: 578 x 189 x 71 mm  
light colour and power adjustable via CCT dip switch  
**249,95 €**

**348099** ceiling light | aluminium diecast  
White aluminium RAL 9006 | WW/NW | 2700/3500/4000 K  
8215 lm | Ra >80 | 45/55/72 W | L x W x H: 578 x 189 x 71 mm  
light colour and power adjustable via CCT dip switch  
**249,95 €**



## HERCULIS MAGNETIC

**688026** showcase light | aluminium diecast | silver  
WW | 3000 K | 100 lm | Ra >90 | H x Ø: 42 x 31 mm  
**49,95 €**

**688025** showcase light | aluminium diecast | black  
WW | 3000 K | 100 lm | Ra >90 | H x Ø: 42 x 31 mm  
**49,95 €**

**688028** showcase light | aluminium diecast | silver  
NW | 4000 K | 100 lm | Ra >90 | H x Ø: 42 x 31 mm  
**49,95 €**

**688027** showcase light | aluminium diecast | black  
NW | 4000 K | 100 lm | Ra >90 | H x Ø: 42 x 31 mm  
**49,95 €**



## HERCULIS SMALL

**688030** showcase light | aluminium diecast | silver  
WW | 3000 K | 100 lm | Ra >90 | H x Ø: 150 x 39 mm  
for surface and recessed mounting thanks to intelligent  
cable routing  
**69,95 €**

**688029** showcase light | aluminium diecast | black  
WW | 3000 K | 95 lm | Ra >90 | H x Ø: 150 x 39 mm  
for surface and recessed mounting thanks to intelligent  
cable routing  
**69,95 €**

**688033** showcase light | aluminium diecast | silver  
NW | 4000 K | 95 lm | Ra >90 | H x Ø: 150 x 39 mm  
for surface and recessed mounting thanks to intelligent  
cable routing  
**69,95 €**

**688031** showcase light | aluminium diecast | black  
NW | 4000 K | 95 lm | Ra >90 | H x Ø: 150 x 39 mm  
for surface and recessed mounting thanks to intelligent  
cable routing  
**69,95 €**



## HERCULIS BIG

**688035** showcase light | aluminium diecast | silver  
WW | 3000 K | 95 lm | Ra >90 | H x Ø: 250 x 39 mm  
for surface and recessed mounting thanks to intelligent  
cable routing  
**69,95 €**

**688034** showcase light | aluminium diecast | black  
WW | 3000 K | 95 lm | Ra >90 | H x Ø: 250 x 39 mm  
for surface and recessed mounting thanks to intelligent  
cable routing  
**69,95 €**

**688037** showcase light | aluminium diecast | silver  
NW | 4000 K | 95 lm | Ra >90 | H x Ø: 250 x 39 mm  
for surface and recessed mounting thanks to intelligent  
cable routing  
**69,95 €**

**688036** showcase light | aluminium diecast | black  
NW | 4000 K | 95 lm | Ra >90 | H x Ø: 250 x 39 mm  
for surface and recessed mounting thanks to intelligent  
cable routing  
**69,95 €**



## HERCULIS DOUBLE

**688039** showcase light | aluminium diecast | silver  
WW | 3000 K | 185 lm | Ra >90 | H x Ø: 200 x 39 mm  
for surface and recessed mounting thanks to intelligent  
cable routing

**99,95 €**

**688037** showcase light | aluminium diecast | black  
WW | 3000 K | 185 lm | Ra >90 | H x Ø: 200 x 39 mm  
for surface and recessed mounting thanks to intelligent  
cable routing

**99,95 €**

**688041** showcase light | aluminium diecast | silver  
NW | 4000 K | 195 lm | Ra >90 | H x Ø: 200 x 39 mm  
for surface and recessed mounting thanks to intelligent  
cable routing

**99,95 €**

**688040** showcase light | aluminium diecast | black  
NW | 4000 K | 195 lm | Ra >90 | H x Ø: 200 x 39 mm  
for surface and recessed mounting thanks to intelligent  
cable routing

**99,95 €**



## HERCULIS TRIPLE

**688043** showcase light | aluminium diecast | silver  
WW | 3000 K | 263 lm | Ra >90 | H x Ø: 250 x 39 mm  
for surface and recessed mounting thanks to intelligent  
cable routing

**119,95 €**

**688042** showcase light | aluminium diecast | black  
WW | 3000 K | 263 lm | Ra >90 | H x Ø: 250 x 39 mm  
for surface and recessed mounting thanks to intelligent  
cable routing

**119,95 €**

**688045** showcase light | aluminium diecast | silver  
NW | 4000 K | 290 lm | Ra >90 | H x Ø: 250 x 39 mm  
for surface and recessed mounting thanks to intelligent  
cable routing

**119,95 €**

**688044** showcase light | aluminium diecast | black  
NW | 4000 K | 290 lm | Ra >90 | H x Ø: 250 x 39 mm  
for surface and recessed mounting thanks to intelligent  
cable routing

**119,95 €**



## ADHARA

**346030** table light | aluminium | white  
WW | 3000 K | 800 lm | Ra >80 | 10 W  
L x Ø: 355 x 150 mm  
double adjustable and fixable via joints  
3-stage dimmable via touch sensor | ready to plug in  
**99,95 €**

**346031** table light | aluminium | silver  
WW | 3000 K | 800 lm | Ra >80 | 10 W  
L x Ø: 355 x 150 mm  
double adjustable and fixable via joints  
3-stage dimmable via touch sensor | ready to plug in  
**99,95 €**

**346029** table light | aluminium | black  
WW | 3000 K | 800 lm | Ra >80 | 10 W  
L x Ø: 355 x 150 mm  
double adjustable and fixable via joints  
3-stage dimmable via touch sensor | ready to plug in  
**99,95 €**



## ADHARA

**346027** table light | aluminium | white  
WW | 3000 K | 640 lm | Ra >80 | 10 W  
L x H x Ø: 498 x 480 x 150 mm  
double adjustable and fixable via joints  
3-stage dimmable via touch sensor | ready to plug in  
**149,95 €**

**346028** table light | aluminium | silver  
WW | 3000 K | 640 lm | Ra >80 | 10 W  
L x H x Ø: 498 x 480 x 150 mm  
double adjustable and fixable via joints  
3-stage dimmable via touch sensor | ready to plug in  
**149,95 €**

**346026** table light | aluminium | black  
WW | 3000 K | 640 lm | Ra >80 | 10 W  
L x H x Ø: 498 x 480 x 150 mm  
double adjustable and fixable via joints  
3-stage dimmable via touch sensor | ready to plug in  
**149,95 €**



## LED EVENT PANEL TRANSPARENT RGBNW

**620032** pendant lamp | aluminium | white, clear  
RGBNW | 4000 K | 4265 lm | Ra >80 | 63 W  
L x W x H: 1195 x 295 x 14 mm  
**235,95 €**

**620031** pendant lamp | aluminium | black, clear  
RGBNW | 4000 K | 4265 lm | Ra >80 | 63 W  
L x W x H: 1195 x 295 x 14 mm  
**235,95 €**



## MADERA

**342169** pendant lamp | oak wood | aluminium  
 WW | 3000 K | 1190 lm | Ra >80 | 14 W  
 L x W x H: 900 x 40 x 60 mm  
 Made in Europe from high quality oak wood grade A  
 FSC-certified raw material oak wood  
 continuously dimmable via touch sensor  
**365,95 €**



## MADERA

**348147** ceiling light | oak wood | aluminium  
 WW | 3000 K | 1120 lm | Ra >80 | 14 W  
 L x W x H: 810 x 135 x 110 mm  
 Made in Europe from high quality oak wood grade A  
 FSC-certified raw material oak wood  
**375,95 €**



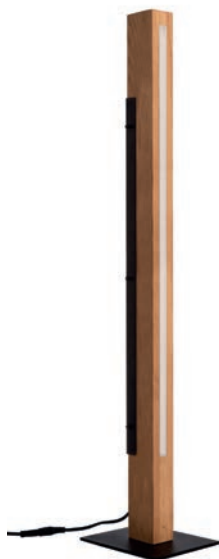
## MADERA

**341248** wall light | oak wood | aluminium  
 WW | 3000 K | 560 lm | Ra >80 | 7 W  
 L x W x H: 450 x 60 x 130 mm  
 Made in Europe from high quality oak wood grade A  
 FSC-certified raw material oak wood  
 continuously dimmable via touch sensor  
**235,95 €**



## MADERA

**346044** table light | oak wood | aluminium  
 WW | 3000 K | 420 lm | Ra >80 | 7 W  
 L x W x H: 40 x 60 x 510 mm  
 Made in Europe from high quality oak wood grade A  
 FSC-certified raw material oak wood  
 continuously dimmable via touch sensor  
**285,95 €**



## MADERA

**343031** floor light | oak wood | aluminium  
 WW | 3000 K | 1610 lm | Ra >80 | 19 W  
 L x W x H: 40 x 60 x 1410 mm  
 Made in Europe from high quality oak wood grade A  
 FSC-certified raw material oak wood  
 continuously dimmable via touch sensor  
**445,95 €**



## OFFICE THREE DALI 2.0

**342146** pendant lamp | aluminium  
White aluminium RAL 9006 | NW | 4000 K | 7000 lm | Ra >80  
58 W | UGR <10 | L x W x H: 1179 x 64 x 35 mm  
max. suspension: 2500 mm  
dimmable via DALI bus according to IEC 62386 DALI 2.0  
**499,95 €**



## LED PANEL PRO

**100044** insert panel | aluminium  
Traffic white RAL 9016 | NW | 4000 K | 3400 lm | Ra >90  
37 W | L x W x H: 620 x 620 x 10 mm  
**99,95 €**



## UNI II

**348124** ceiling light | aluminium diecast  
Signal white RAL 9003 | WW | 3000 K | 670 lm | Ra >90  
9 W | H x Ø: 103 x 100 mm  
**142,95 €**



## OFFICE THREE MOTION

**343023** floor light | aluminium  
White aluminium RAL 9006 | NW | 4000 K | 9600 lm | Ra >80  
80 W | UGR <6 | L x W x H: 1950 x 64 x 1056 mm  
dimmable via touch sensor  
motion sensor | daylight sensor  
**999,95 €**



## SATURN

**565202** recessed ceiling built-in lamp | aluminium  
white, chrome | NW | 4000 K | 720 lm | Ra >80  
7 W | H x Ø: 49 x 100 mm | transversable  
**65,95 €**



## COB BACK LIGHT

**565224** recessed ceiling built-in lamp | aluminium diecast  
white | WW | 3000 K | 1000 lm | Ra >80  
9 W | H x Ø: 89 x 110 mm  
**95,95 €**



### ACRUX 90

**565316** recessed ceiling built-in lamp | plastic  
Traffic white RAL 9016 | VVV/NW/CW | 3000/4000/6000 K  
760 lm | Ra >80 | 9 W | H x Ø: 58 x 113 mm  
light colour adjustable via dip switch [CCT DIP]  
**30,95 €**



### ACRUX 120

**565317** recessed ceiling built-in lamp | plastic  
Traffic white RAL 9016 | VVV/NW/CW | 3000/4000/6000 K  
1370 lm | Ra >80 | 14,50 W | H x Ø: 65,8 x 145,0 mm  
light colour adjustable via dip switch [CCT DIP]  
**36,95 €**



### COB 170

**565182** recessed ceiling built-in lamp | aluminium  
Traffic white RAL 9016 | VVV | 3000 K | 2100 lm | Ra >90  
25 W | H x Ø: 86 x 190 mm  
**119,95 €**



### COB 94 RGBW

**565245** recessed ceiling built-in lamp | aluminium diecast  
Grauweiß RAL 9002 matt | RGBVVV | 3000 K | 710 lm | Ra >80  
16 W | H x Ø: 70 x 110 mm | transversable  
**119,95 €**



### CETI 10

**565251** recessed ceiling built-in lamp | aluminium diecast  
white matt, black | VVV | 3000 K | 1600 lm | Ra >90  
20 W | L x W x H: 257 x 52 x 44 mm  
**169,95 €**



### CETI 15

**565252** recessed ceiling built-in lamp | aluminium diecast  
white matt, black | VVV | 3000 K | 2400 lm | Ra >90  
30 W | L x W x H: 376 x 52 x 44 mm  
**229,95 €**



### LUNA 30

**707019** power rail spotlight | aluminium diecast  
Pure white RAL 9010 | NW | 4000 K | 2210 lm | Ra >90  
30 W | L x W x H: 165 x 121 x 85 mm  
dimmmable via phase control or phase cut-off  
**179,95 €**



### D LINE SURFACE-MOUNTED POWER RAIL

**710000** power rail | aluminium  
Traffic white RAL 9016 | L x W x H: 1000 x 35,20 x 35,50 mm  
3 Phasen  
**34,95 €**



## MAIA II

**731105** effect light | aluminium diecast  
Pure white RAL 9010 | WW | 3000 K | 70 lm | Ra >80  
4 W | L x W x H: 148,00 x 60,60 x 98,50 mm  
**189,95 €**



## 3528-180-24V-3000K-5M

**840179** LED stripe  
WW | 3000K [+/- 150K] | 180 LED/m | 13,50 W/m  
81,48 lm/W | 1100 lm/m | Ra 90 | Pixel Pitch 5,56 mm | IP20  
cutting option 33,4 mm / 6 LED  
L x W x H: 5000 x 8 x 1,4 mm  
**129,95 €**



## TRI PROOF

**730424** damp-proof luminaire | plastic  
white matt | NW | 4000 K | 2980 lm | Ra >80 | 34,40 W  
L x W x H: 1296 x 61 x 56 mm | incl. 3 mountings clips  
**59,95 €**

**730425** damp-proof luminaire | plastic  
white matt | NW | 4000 K | 3820 lm | Ra >80 | 43,60 W  
L x W x H: 3820 x 61 x 56 mm | incl. 3 mountings clips  
**74,95 €**

## AU-01-10

**970020** flat U-profile for LED stripes up to 11.2 mm wide  
aluminium anodized  
L x W x H: 1000 x 16 x 7 mm  
**9,95 €**



## AU-02-20

**970200** high U-profile for LED stripes up to 21.3 mm wide  
aluminium anodized  
L x W x H: 1000 x 26 x 20 mm  
**15,95 €**



## SOCKET TOWER ILLUMINATED

**733054** Energy distributor | aluminium diecast  
dark grey | WW | 3000 K | 150 lm | Ra >80  
4 W | L x H x Ø: 478 x 100 mm | luminaire switchable  
incl. 2 outlets [total load max. 3650 W]  
**159,95 €**

## AV-03-12

**970432** corner profile for LED stripes up to 13.3 mm wide  
aluminium anodized  
L x W x H: 1000 x 25 x 25 mm  
**15,95 €**





### 3528-180-24V-4000K-5M

**840180** LED stripe  
 NW | 4000K [ $\pm$  150K] | 180 LED/m | 13,50 W/m  
 90,37 lm/W | 1220 lm/m | Ra 90 | Pixel Pitch 5,56 mm | IP20  
 cutting option 33,4 mm / 6 LED  
 L x W x H: 5000 x 8 x 1,4 mm  
**129,95 €**



### ET-02-12

**975140** high T-profile for LED stripes up to 13.3 mm wide  
 aluminium anodized  
 L x W x H: 1000 x 18 x 15 mm  
**14,95 €**



### ET-02-15

**975160** high T-profile for LED stripes up to 16.3 mm wide  
 aluminium anodized  
 L x W x H: 1000 x 21 x 15 mm  
**14,95 €**



### EV-02-08

**975350** tile profile for LED stripes up to 9.3 mm wide  
 aluminium anodized  
 L x W x H: 1250 x 42 x 42 mm  
**32,95 €**



### ELECTRA

**342116** pendant lamp | glass  
 silver coloured chrome | VVV | 3000 K | 180 lm | Ra >80  
 4 W | Ø: 115 mm | max. suspension: 1200 mm  
**89,95 €**



### ALWA I

**341229** reading light | aluminium  
 Traffic black RAL 9017 | VVV | 3000 K | 180 lm | Ra >80  
 3 W | L x Ø: 110 x 30 mm  
**105,95 €**



### BRAHE

**346016** table light | aluminium  
 Traffic black RAL 9017 | VVV | 3000 K | 370 lm | Ra >80  
 2 W / 4,80 W | L x Ø: 455 x 150 mm  
**99,95 €**



## UNI II TRIPLE

**348107** ceiling light | aluminium diecast  
Signal white RAL 9003 | VVW | 3000 K | 2150 lm | Ra >90  
28 W | L x W x H: 324 x 100 x 103 mm  
**359,95 €**



## D FLEX LINE MINI TOP VIEW IP68 3000K

**840288** LED stripe  
VVW | 3000K (+/- 150K) | 144 LED/m | 10,50 W/m  
49,05 lm/W | 515 lm/m | Ra 80 | Pixel Pitch 6,94 mm | IP68  
cutting option 41,66 mm / 6 LED  
L x W x H: 5000 x 16,5 x 16,5 mm  
**689,95 €**



## 5050-60-24V-RGB-6500K-5M-SILIKON

**840357** LED stripe  
RGB+CW | 460-630 nm | 6500K | 60 LED/m | 16,50 W/m  
50,91 lm/W | 840 lm/m | Ra 80 | Pixel Pitch 16,66 mm | IP44  
cutting option 166,66 mm / 10 LED  
L x W x H: 5000 x 10 x 2,8 mm  
**159,95 €**



## ACRUX 145

**565318** recessed ceiling built-in lamp | plastic  
Traffic white RAL 9016 | VVW/NW/CW | 3000/4000/6000 K  
1570 lm | Ra >80 | 17 W | H x Ø: 68,5 x 174,0 mm  
light colour adjustable via dip switch [CCT DIP]  
**41,95 €**



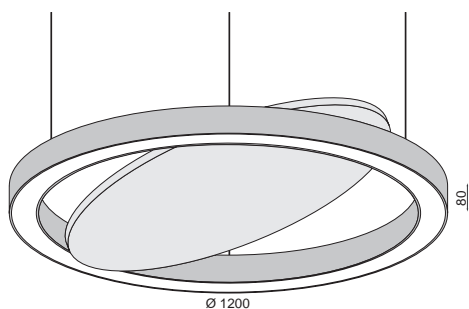
## LED PANEL FLEX

**100058** insert panel | aluminium  
Traffic white RAL 9016 | VVW/NW/CW | 3000/4000/5500 K  
3300 lm | Ra >90 | 40 W | UGR <19 | IK08  
L x W x H: 620 x 620 x 10 mm  
light colour adjustable via dip switch [CCT DIP]  
**139,95 €**



## WALL WASHER CAPH SYMMETRIC

**732071** wall washer | aluminium diecast  
Graphite grey RAL 7024 | RGB+VVW | 3000 K | 2800 lm  
Ra >80 | 60 W | IP65 | L x W x H: 1000 x 53,36 x 81,07 mm  
incl. 0,5 m connection cable with WEIPU  
incl. 0,5 m connection cable with WEIPU  
**339,95 €**



## NEX-A-1200

	power	light intensity			
		diffuser opal		diffuser microprismatic	
		3000 K	4000 K	3000 K	4000 K
Ø 1200 mm	84 W	6340lm	6580lm	7250lm	7520lm

**NEX-N-82**

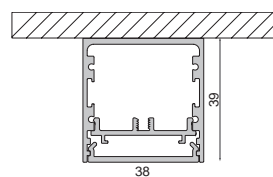
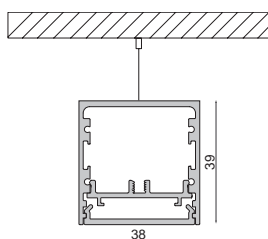
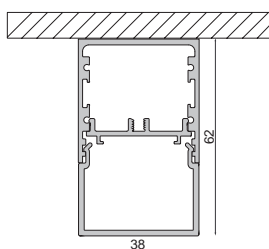
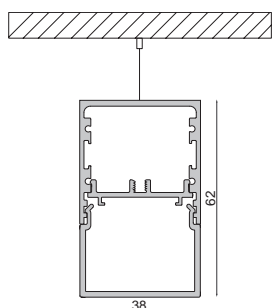
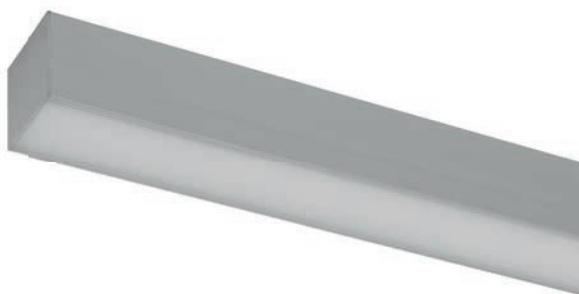
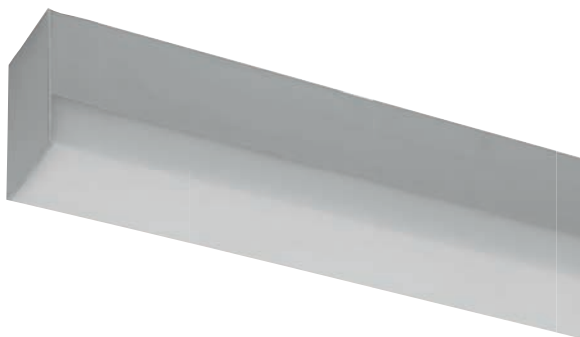
H x B: 80 x 82 mm

length	light intensity			
	diffuser opal		diffuser microprismatic	
	3000 K	4000 K	3000 K	4000 K
290 mm	550 lm	550 lm	550 lm	550 lm
290 mm	1050 lm	1100 lm	1050 lm	1100 lm
570 mm	1050 lm	1100 lm	1050 lm	1100 lm
570 mm	2100 lm	2200 lm	2100 lm	2200 lm
860 mm	3150 lm	3300 lm	3150 lm	3300 lm
1130 mm	4200 lm	4400 lm	4200 lm	4400 lm
1420 mm	5250 lm	5500 lm	5250 lm	5500 lm
2250 mm	8400 lm	8800 lm	8400 lm	8800 lm
4500 mm	16800 lm	17600 lm	16800 lm	17600 lm

**NEX-N-100**

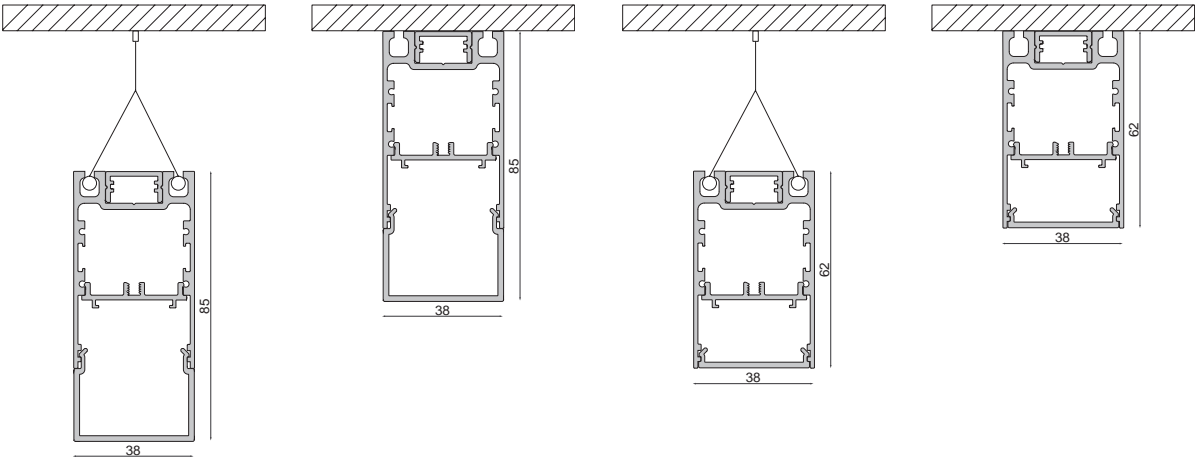
W x H: 100 x 90 mm

length	light intensity			
	diffuser opal		diffuser microprismatic	
	3000 K	4000 K	3000 K	4000 K
290 mm	550 lm	550 lm	550 lm	550 lm
290 mm	1050 lm	1100 lm	1050 lm	1100 lm
570 mm	1050 lm	1100 lm	1050 lm	1100 lm
570 mm	2100 lm	2200 lm	2100 lm	2200 lm
860 mm	3150 lm	3300 lm	3150 lm	3300 lm
1130 mm	4200 lm	4400 lm	4200 lm	4400 lm
1420 mm	5250 lm	5500 lm	5250 lm	5500 lm
2250 mm	8400 lm	8800 lm	8400 lm	8800 lm
4500 mm	16800 lm	17600 lm	16800 lm	17600 lm



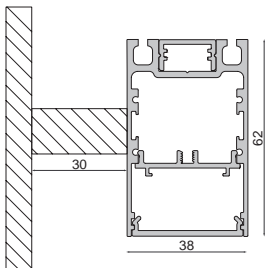
## NEX-D-38

length	power	light intensity			
		diffuser opal, opal U		diffuser microprismatic	
		3000 K	4000 K	3000 K	4000 K
580 mm	7 W	728 lm	765 lm	884 lm	927 lm
860 mm	11 W	1092 lm	1145 lm	1326 lm	1390 lm
1140 mm	15 W	1456 lm	1526 lm	1763 lm	1853 lm
1490 mm	19 W	1911 lm	2004 lm	2321 lm	2431 lm
1980 mm	26 W	2548 lm	2671 lm	3094 lm	3243 lm



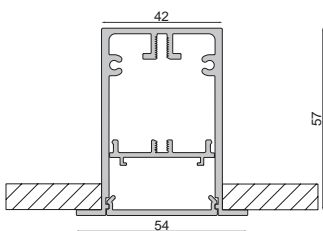
NEX-E-38

	length	power	light intensity			
			diffuser opal, opal U		diffuser microprismatic	
			3000 K	4000 K	3000 K	4000 K
direct	580 mm	7 W	728lm	765lm	884lm	927lm
	860 mm	11 W	1092lm	1145lm	1326lm	1390lm
	1140 mm	15 W	1456lm	1526lm	1763lm	1853lm
	1490 mm	19 W	1911lm	2004lm	2321lm	2431lm
	1980 mm	26 W	2548lm	2671lm	3094lm	3243lm
direct / indirect	580 mm	13 W	1449lm	1519lm	1760lm	1845lm
	860 mm	20 W	2177lm	2286lm	2644lm	2775lm
	1140 mm	27 W	2898lm	3038lm	3519lm	3689lm
	1490 mm	34 W	3717lm	3899lm	4514lm	4735lm
	1980 mm	46 W	5075lm	5324lm	6163lm	6464lm



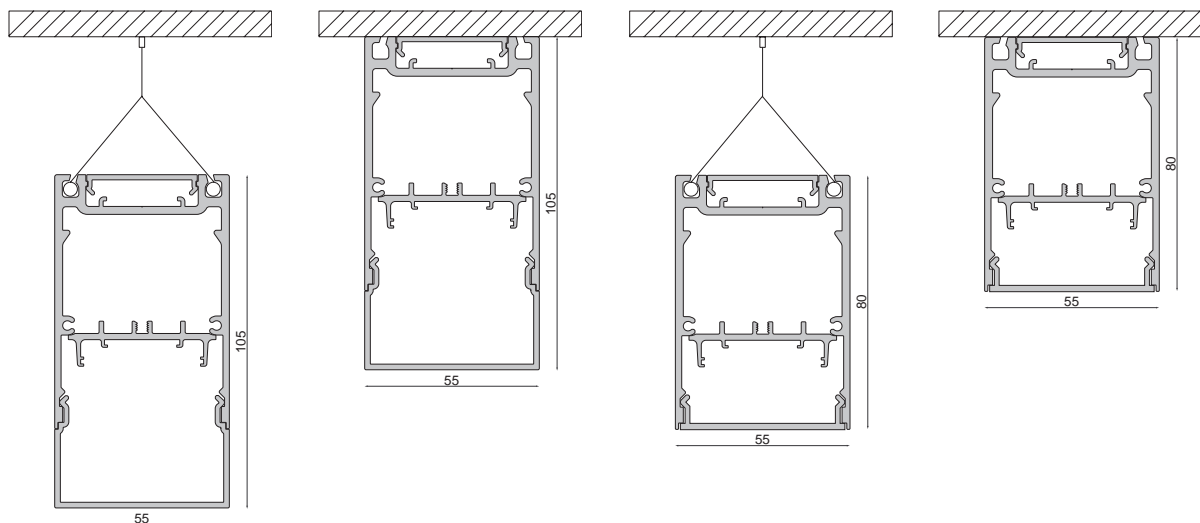
## NEX-E-38

	length	power	light intensity	
			diffuser opal, opal U	
			3000 K	4000 K
direct	580 mm	7 W	728 lm	763 lm
	860 mm	11 W	1092 lm	1145 lm
	1140 mm	15 W	1456 lm	1526 lm
	1490 mm	19 W	1911 lm	2004 lm
	1980 mm	26 W	2548 lm	2671 lm
direct / indirect	580 mm	15 W	1456 lm	1586 lm
	860 mm	22 W	2184 lm	2289 lm
	1140 mm	29 W	2912 lm	3052 lm
	1490 mm	39 W	3822 lm	4004 lm
	1980 mm	51 W	5096 lm	5341 lm



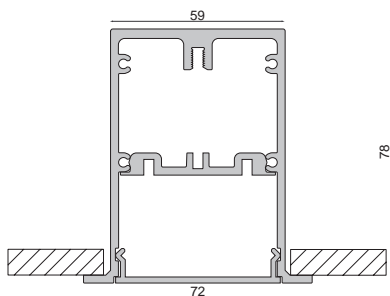
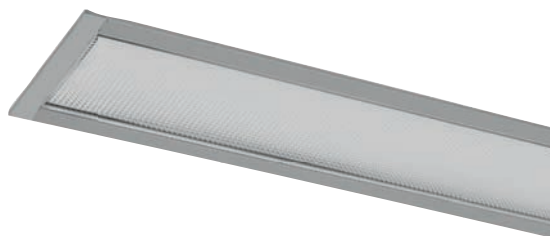
## NEX-E-54

length	power	light intensity	
		diffuser opal, opal U	
		3000 K	4000 K
580 mm	7 W	728 lm	765 lm
860 mm	11 W	1092 lm	1145 lm
1140 mm	15 W	1456 lm	1526 lm
1490 mm	19 W	1911 lm	2004 lm
1980 mm	26 W	2548 lm	2671 lm



## NEX-M-55

	length	power	light intensity			
			diffuser opal, opal U		diffuser microprismatic	
			3000 K	4000 K	3000 K	4000 K
direct	580 mm	7 W	728lm	765lm	884lm	927lm
	860 mm	11 W	1092lm	1145lm	1326lm	1390lm
	1140 mm	15 W	1456lm	1526lm	1763lm	1853lm
	1490 mm	19 W	1911lm	2004lm	2321lm	2431lm
	1980 mm	26 W	2548lm	2671lm	3094lm	3243lm
direct / indirect	580 mm	15 W	1456lm	1586lm	1768lm	1853lm
	860 mm	22 W	2184lm	2289lm	2652lm	2780lm
	1140 mm	29 W	2912lm	3052lm	3536lm	3706lm
	1490 mm	39 W	3822lm	4004lm	4641lm	4862lm
	1980 mm	51 W	5096lm	5341lm	6188lm	6486lm



## NEX-M-72

length	power	light intensity			
		diffuser opal, opal U		diffuser microprismatic	
		3000 K	4000 K	3000 K	4000 K
580mm	7 W	728lm	765lm	884lm	927lm
860mm	11 W	1092lm	1145lm	1326lm	1390lm
1140mm	15 W	1456lm	1526lm	1763lm	1853lm
1490mm	19 W	1911lm	2004lm	2321lm	2431lm
1980mm	26 W	2548lm	2671lm	3094lm	3243lm



# SPOT ON!

## THE MAGAZINE

### **DEKO-LIGHT Elektronik Vertriebs GmbH**

Auf der Hub 2 | 76307 Karlsbad

T +49 7248 9271 500 | F +49 7248 9271 550

deko@deko-light.com | deko-light.com

*CEO:* Janosch Sohns

### **EDITORIAL**

*responsible editor:* Alexander Cevolani,

Event Edit | PR & Redaktion, [www.eventedit.de](http://www.eventedit.de)

*technical-scientific advice:* Marc Dicker, Daniel Merz

### **CONCEPTION**

*project management:* Dirk Gebhard

### **LAYOUT**

*layout / design:* Janice Hesse

### **PHOTOS / VIDEOS**

*pictures:* Andris Balodis, Roman Schinzel

*page 07:* Daniel Wieser

### **PRINT**

Heinzmann Druck GmbH | Carl-Benz-Straße 6 | 76694 Forst



DEKO-LIGHT  
Elektronik Vertriebs GmbH  
Auf der Hub 2  
76307 Karlsbad

T +49 7248 9271 500  
F +49 7248 9271 550

[deko@deko-light.com](mailto:deko@deko-light.com)  
[deko-light.com](http://deko-light.com)  
[shop.deko-light.com](http://shop.deko-light.com)