


SPOT ON!



THE MAGAZINE

#2/2021

TRENDS

APPLICATIONS

PRODUCTS

Our General Terms and Conditions apply. Prices are gross sales prices incl. VAT. These offers cannot be combined with other offers / discounts. All items are always delivered without illuminants, unless the product description specifies otherwise. Errors and omissions excepted. Delivery only while stocks last.

SPOT ON!

THE MAGAZINE

DARE TO GARDEN MORE!



Welcome to the new issue of SpotOn Magazine! Our colourful cover already gives it away: it's going outdoors. When summer calls, people are drawn outside, starting with their own garden, terrace or balcony. No matter how much outdoor space you have: we have the right outdoor trends for you - and the professional 3D visualisation to go with it (from p. 30).

One system, seven colours, 36 combinable elements, no cables - the MIRAM is a real highlight of this issue and not for nothing our cover light. We have ventured a little more colour and developed a series that DEKO-LIGHT has never seen before. You can read more about MIRAM on page 6.

A church, a dental practice, a house with private and commercial use under one roof. The requirements for our luminaires could hardly be more different. Turn to page 44 and see for yourself how our customers have implemented the respective objects.

We are pleased to be a member of the Deutsche Lichttechnische Society with immediate effect. As a long-standing supporter of the "LUXI" lighting prize of the LICHTWOCHE Munich, we are pleased to be able to address the aspects of promoting young talent and further training even more comprehensively together with LiTG. From page 56 onwards you can find out more about our membership and the work of the German Lighting Society.

Look forward with us to the new issue of SpotOn magazine - to light in all its varieties, application scenarios and technologies.

Yours sincerely,


Janosch Sohns

1

PRODUCT NEWS



ACCU & OUTDOOR 04

Our new battery-powered outdoor lights:
Flexibility that is fun



WALL & FLOOR LAMPS 12

Standard does not have to be boring

CLASSIC OUTDOOR LIGHTS 18

Classic designs
with modern functions

UP & DOWN 20

Double light emission
for facades and more

NEW PIONEERS 22

With our multi-outdoor
cable distributors you have everything
under control

2

SPECIAL



MORE LINEAR - IMPOSSIBLE 24

Discover our new LED stripees
in 230V and COB version



SMALL WORLDS OF LIGHT, BIG EFFECT 28

Lighting ideas for various
Outdoor scenarios & 3D visualisation at a
fixed price

TRADESPEOPLE 34

Commercial luminaires offer more
than just functional light

TEAMWORK 38

Get to know your contact persons
in the internal sales department

JOURNEY TO THE STARS 40

We reveal the secret behind
our product and series names



MY LOVE 41

DEKO-LIGHT employees
present their favourite product

UNITED INTO THE FUTURE 42

Marketing Manager Dirk Gebhard on the
new one-brand strategy at DEKO-LIGHT

3

COMPANY

4

LIGHTING SOLUTIONS



LINEAR CONNECTION 44

One house, two companies, commercial and private - our new linear light reference has a lot to offer



NEW FLUORESCENT 48

What connects a church with a dental practice? Luminaires from DEKO-LIGHT and modern lighting designs by leuchtstoff*.



WHERE OTHERS HOLIDAY 52

Our new outdoor reference - characterised by lots of stone and water as well as numerous DEKO-LIGHT spotlights

5

FORUM



Deutsche Lichttechnische Gesellschaft e.V.

UNITED IN UNITY 54

DEKO-LIGHT is now a member of the Deutsche Lichttechnische Gesellschaft (German Lighting Society)

OLD LIGHT, NEW VALUES 58

We inform which effects the Ecodesign Directive 2021 has on our luminaire production



MARC'S TECHNIC CORNER 60

Our technology expert Marc Dicker gives tips on the assembly of LED stripes



COLUMN: SPOT OFF 80

How smart does a man have to be? Field worker Hartmut Rottke on the bizarre excesses of smart technology in the lighting sector

FLEXIBILITY, WHICH IS FUN

OUR NEW BATTERY-POWERED OUTDOOR LIGHTS COMBINE MODERN DESIGN WITH SOPHISTICATED FUNCTIONALITY - AND A COLOURFUL VARIETY.

A table lamp (ALGIEBA) that has what it takes to become a modern design classic. Another table lamp (CRUCIS), which also cuts an excellent figure on the floor or on wall ledges. And a magnetic luminaire (MIRAM) in seven colour variations, around which we have designed a whole series of innovative holders. The new battery-powered outdoor lights from DEKO-LIGHT offer the right mobile light for almost any outdoor application.



Quick facts: ALGIEBA

- Type: Table lamp
- material: die-cast aluminium
- 24 LEDs: 3,000 K, warm white
- charging station included and induction charging surface
- IP54
- colours: white, grey, black

Typical applications

- Garden & Terrace
- Wellness, Spa & Gym
- Bistro, Bar & Restaurant

- ◀ Design and functionality in perfect harmony: ALGIEBA battery-powered table lamp incl. dimmable touch sensor and induction charging surface in the base

ALGIEBA

As with any good design, the ALGIEBA also offers new details that only become apparent at second or third glance - but unfold their effect at first sight: the large base, which does not appear clunky only because of the minimally rounded corners; the tapered neck, which rises from the base in a flowing (aluminium) casting; the round touch sensor, which not only enables convenient dimming, but also manages to focus the lampshade with a single, simple circle, giving it additional contour.

Whether in the private garden, on the terrace of a restaurant or in an outdoor wellness area - the ALGIEBA is placed once on the supplied charging station and can then be placed anywhere to create a cosy atmosphere with its warm white light. If you wish, you can also place your smartphone on the base via the integrated induction charging surface and charge it...

Typical applications

- Garden & Terrace
- Wellness, Spa & Gym
- Bistro, Bar & Restaurant



- ◀ "Luftikus": The CRUCIS table lamp with its modern, universal design and secure stand is not only predestined for use on main and side tables.

CRUCIS

It is no coincidence that the CRUCIS is reminiscent of a bestseller in the DEKO-LIGHT portfolio - the LACERTAE USB - which is one of our staff's absolute favourites (more on this on p. 41). We are sure that the CRUCIS will also find its fixed or flexible place on numerous tables, terraces and other storage areas.

The striking, modern design of the CRUCIS is based on an angular and at the same time airy aluminium frame with 24 integrated, all-round warm white LEDs. A touch sensor is placed centrally on the base to dim the CRUCIS continuously. As with the ALGIEBA, the CRUCIS is also charged wirelessly via a charging station that is included in the delivery, so that it can then be placed in outdoor or indoor areas as desired.



Quick facts: CRUCIS

- Type: Table lamp
- Material: die-cast aluminium
- 24 LEDs: 3,000 K, warm white
- Charging station included
- IP54
- Colours: white, grey, black

1

PRODUCT NEWS



TIME FOR NEW COLOURS

**50 SHADES OF BLACK AND WHITE -
MOST LUMINAIRES ON THE MARKET
MAKE USE OF THIS SIMPLE COLOUR
SPECTRUM, IN ORDER TO BE VISUALLY
VISUALLY. BUT SOMETIMES
A SPLASH OF COLOUR IS NEEDED
FOR A LITTLE MORE LIVELINESS.**

Spring is here, summer is just around the corner and nature lets its colours blossom in the sunlight. Our new MIRAM series is as diverse as the flora of the warm seasons: a colourful battery lamp that can be quickly and easily connected to various holders thanks to its magnetic fastening - on the table, on the wall or swinging from the ceiling. With a total of 36 combinable elements, there are hardly any limits to creativity. Let your terrace, balcony, small niches in the courtyard or simply a side table shine and make every season a colourful event!



THE FOUR MIRAM ELEMENTS AT A GLANCE:

THE HEAD

The head is the output and centre of the MIRAM series and can be combined with all holders as desired thanks to its magnetic attachment. Once charged via a standard USB-C cable, the head lights up for more than 10 hours and can be dimmed continuously via a touch switch.



THE PENDULUM

The trapezoidal pendulum makes placing the MIRAM particularly easy: no drilling, no screwing - simply wrap it around a pole, beam or sturdy tree branch and the MIRAM will light up even a picnic in the great outdoors.



THE WALL BRACKET

With the easy-to-mount wall bracket via two screws, you can use the MIRAM head on exterior and interior walls. Thanks to the compact dimensions of the entire series, you can easily use several brackets and heads in a small space.

THE STAND

With the stand, the MIRAM becomes a mobile table lamp - whether for a spontaneous round of skat on the terrace, as an individually dimmable lamp in cafés or as a colourful desk lamp that provides children with light for their homework even in the cold, dark season.

Quick Facts: MIRAM

- Type: Rechargeable magnetic light
- Connection: USB-C
- Diameter: 12 cm (head)
- Material: die-cast aluminium
- Light colour: 3,000 K, warm white
- IP54 RATING
- Colours: yellow, blue, green, red, black, white, grey

Play, learn, enjoy life

We think: with its strong colours, the MIRAM also fits perfectly into children's rooms, kindergartens or common rooms in schools. Everyday life doesn't have to be grey...



346025



346033



346032



346034



346035



346036



346037



930625



930627



930626



930628



930629



930630



930631



930618



930620



930619



930621



930622



930623



930624



930611



930613



930612



930614



930615



930616



930617



THE SUBTLE DIFFERENCES

FIVE DIFFERENT WALL AND FLOOR LUMINAIRES, FIVE DIFFERENT CONCEPTS: THERE IS ALSO A LOT OF VARIETY IN THE STANDARD OUTDOOR LUMINAIRES.

Luminaire on the wall, floor lamp in the ground - that's it for outdoor lighting! You shouldn't make it quite so simple for yourself, because even with the routinely planned lighting elements in the outdoor area, there is plenty of leeway and numerous details that are worth paying attention to. Our new outdoor luminaires for wall mounting or vertical positioning as floor luminaires exemplify this diversity.

WALL-MOUNTED LUMINAIRES

When comparing the new models from the ALKES, ALBALDAH and ADEBAR series the differences are immediately apparent:

- SMD or E27 socket?
- Modern floodlight or classic wall light design?
- With or without motion sensor?
- Real glass or open?
- IP65 or IP44?

Fortunately, we have developed the right wall-mounted luminaire for every application:

ALKES

The ALKES series is not a classic wall-mounted luminaire, but with its SMD LED panel is reminiscent of a floodlight. The highlight: the upper part of the housing is tilted forward by 45° from the façade to direct the warm white light specifically onto the surface to be illuminated. In addition, the ALKES with its modern design and rounded edges cuts a great figure even when switched off.



Die ALKES ist in vier Varianten erhältlich:

- ALKES S with 920 lumens
- ALKES S MOTION with 920 lumens and integrated motion sensor
- ALKES L with 1,720 lumens
- ALKES L MOTION with 1,720 lumens and integrated motion sensor



Typical applications

- Facade / Object
- Garage / Carport / Parking space
- Entrance / courtyard / path

Quick facts: ALKES

- Type: Wall-mounted luminaire, 2 sizes
- Beam angle to facade: 45°
- Light source: 48 or 96 LEDs (SMD)
- Light colour: 3,000 K warm white
- IP65 RATING
- with or without motion sensor

ALBALDAH MOTION & ADEBAR MOTION

The ALBALDAH MOTION and ADEBAR MOTION are far more classic than the ALKES. Both wall luminaires are fixed and have an energy-saving motion sensor for use on terraces, in garages or on walkways, but differ in two essential points: While the ADEBAR MOTION with its E27 socket allows the choice of light source and encloses it protectively with a high-quality real glass pane, the ALBALDAH MOTION focuses on more air and transparency. The integrated SMD LED light source sits with its curved cover on the upper edge and ensures homogeneous light distribution. Compared to the IP44-protected ADEBAR, the ALBALDAH thus achieves a protection rating of IP65.

*Quick facts: ALBALDAH MOTION*

- Type: Wall-mounted luminaire
- incl. motion sensor
- Light source: 28 LEDs (SMD)
- Light colour: 3,000 K warm white
- IP65



Typical applications

- Facade / Object
- Garage / Carport / Parking
- Entrance / Yard / Path

Quick facts: ADEBAR MOTION

- Type: Wall-mounted luminaire
- incl. motion sensor
- Socket: E27
- Real glass pane
- IP44

ARBINTO & ALHENA

The ARBINTO and ALHENA series could hardly be more different in their design for outdoor use. On the one hand, there is the ARBINTO, which is reminiscent of a torch with its towering base and upper light emission with E27 bulb (not included) and real glass frame, creating an immediate feeling of warmth and security. On the other hand, the thoroughly modern, towering ALHENA with 360° light distribution, which not only illuminates thanks to its SMD construction, but also appears as a design element itself.

Typical applications

- Garage / Carport / Parking space
- Entrance / courtyard / path
- Garden / Terrace

*Quick facts: ARBINTO*

- Type: Floor lamp
- Socket: E27
- dimmable via optional light source
- Real glass pane

1500 mm

900 mm



Quick facts: ALHENA

- Type: Floor lamp
- Light distribution: 360
- Light source: 240 or 504 LEDs (SMD)
- Luminous intensity: 2,965//3,900 lumen
- Light colour: 3,000 K warm white
- incl. IP65 connection box
- 2 sizes: 900 mm or 1,500 mm



Typical applications

- Garage / Carport / Parking space
- Entrance / courtyard / path
- Garden / Terrace



SOMETIMES YOU JUST NEED A CLASSIC

WITH OUR CLASSICS IN A MODERN GUISE, YOU WON'T MISS OUT ON MODERN FEATURES.

With our classic outdoor luminaires, tried and tested luminaire design from over 100 years meets modern conveniences. The timeless wall-mounted luminaires of the new SAIPH and SARGAS series evoke reminiscences of iconic designs from various decades and impress with high-quality real glass that is not only resistant to scratches but also weatherproof and UV-stable.



Where heavy cast iron was used in the past, you now don't need to worry about load-bearing capacities on modern, insulated plaster exterior walls: the housings of our classics are made of light yet sturdy aluminium. What's more, thanks to the universal E27 socket, you can equip the luminaires with a wide variety of light sources and also control your classics smartly.

Quick facts

- Type: Wall-mounted luminaires
- Material: aluminium, real glass
- Socket: E27
- IP23 / 44

◀ Modern combination:
The SAIPH wall-mounted luminaire on a crosshatched base creates a characteristic counterpoint in reduced environments.

Cheers! ▶

SARGAS provides warm light and a friendly atmosphere that is very pleasant to be in.



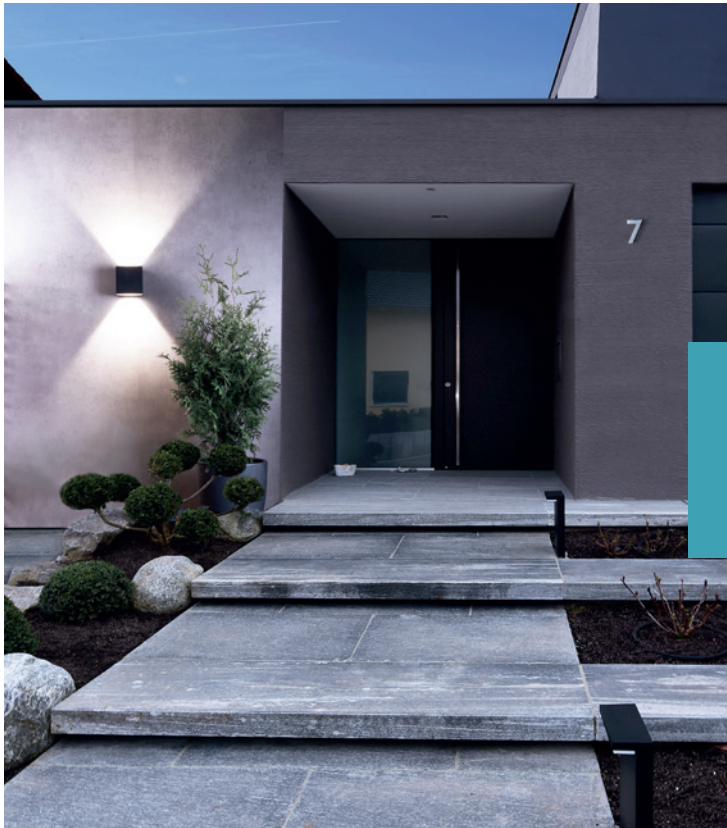
Typical applications

- Facade / Object
- Garage / Carport
- Entrance / Yard / Path

UP & DOWN

YOU DETERMINE THE DIRECTION! WITH OUR NEW WALL-MOUNTED LUMINAIRES FOR THE OUTDOOR AREA WALLS AND WALLS SHINE IN ONE OR BOTH DIRECTIONS. IN ONE OR BOTH DIRECTIONS.

With the new ACHERNAR and JABBAH outdoor series, you don't have to make many decisions: square or round? Light downwards or down & up? Straight or asymmetrical light emission? What both wall-mounted luminaires have in common is their timeless, minimalist design, which is convincing both on façades, in garages and car parks as well as entrance courtyards or on pavement walls. In addition, both series are IP65-certified and can therefore cope with all weather conditions without any problems.



The square JABBAH uses integrated COB LEDs in warm white and emits its light asymmetrically at 75° in a cone shape onto walls - in the simple version with 915 lumens, as UP AND DOWN version with a total of 1850 lumens. In addition, the double-sided JABBAH can be dimmed to 60% light output via a dip switch if a more discreet light output is desired.

Typical applications

- Facade / Object
- Garage / Carport
- Entrance / Yard / Path

◀ Timeless cube with asymmetrical light emission:
The JABBAH sets the scene for walls of houses, walls and objects with a directed beam of light.

Quick facts: JABBAH

- Type: Wall mounted luminaire
- Material: Die-cast aluminium
- Luminous intensity:
915 lm (JABBAH),
1850 lm (JABBAH UP AND DOWN)
- IP65
- Dimensions L x W x H: 150 x 150 x 150 mm

The cylindrical ACHERNAR is also available as an UP AND DOWN version. In contrast to the JABBAH, the ACHERNAR allows users to choose the respective light source, as its simple die-cast aluminium housing accommodates one or two GU10 bases with a maximum of 50 or 2x 35 watts.

Typical applications

- Facade / Object
- Garage / Carport
- Entrance / Yard / Path

Up & down with a lot of flexibility:
The GU10 base of the ACHERNAR allows the free choice of the light for every application.



Quick facts: ACHERNAR

- Type: Wall mounted luminaire
- Base: GU10
- Material: Die-cast aluminium
- Power consumption:
50 W (ACHERNAR),
2x 35 W (ACHERNAR UP AND DOWN)
- IP65
- Maße L x H x Ø: 158 x 95 x 63 mm

NEW PIONEERS

THE WAYS OF THE CABLE ARE UNFATHOMABLE? NOT IF THEY RUN VIA OUR NEW MULTI-OUTDOOR CABLE DISTRIBUTORS...

The more luminaires and accompanying lighting solutions are planned and installed in a project, the more complex cable management becomes. A wide variety of cable and wire and wire cross-sections converge and must be connected as efficiently as possible. In outdoor areas, there are even more requirements for protecting cables against external influences. With our new, multifunctional cable connectors and distributors, you are perfectly equipped for these tasks.





Access to cables via screwed, waterproof cover

Supplied blanking plugs for unused cable entries

Waterproof cable glands

All multi-outdoor cable distributors are supplied with corresponding adapter sleeves in order to be able to insert different cable cross-sections depending on the model.

Further cable distributors for outdoor use can be found on page 69.

1

PRODUCT NEWS

MORE LINEAR - IMPOSSIBLE!

WITH OUR NEW LED STRIPEE VERSIONS IN 230V AND COB VERSIONS, YOU CAN NOW MAKE YOUR LINEAR LIGHTING SOLUTIONS EVEN MORE FLEXIBLE.

Linear light is THE trend in private and commercial lighting. Whether indoors or outdoors, as subtle accentuation or literally groundbreaking light - with the enormous variety of LED stripes, profiles, controllers and accessory options available, creative as well as functional solutions can be implemented in the most diverse ways. Nevertheless, there are still "dark spots" that can only be insufficiently illuminated in a linear fashion. Thus, lighting designers and electrical installers have always had to resort to coupled stripes with connectors in applications with excess length - for example along large buildings or in hotel corridors. The magic limit for 12V or 24V stripes is five metres.

In addition to the limited length, conventional LED stripes are also constructed in SMD technology, in which many individual SMD LEDs sit in their own housings on the stripe. A disadvantage: depending on the stripee and profile, the LEDs can become visible as individual points of light, which leads to undesirable light-dark gradients and thus does not represent a true linear lighting solution.





SOLUTION 1: 230V LED STRIPES

LED stripes in 230V AC voltage are excellently suited if the requirements and focus are on flexible, long stretches to be illuminated indoors and outdoors. Due to the high voltage of 230V - compared to the usual 12V or 24V versions - the LED stripes can be laid and operated in one piece over a length of up to 50 metres. Moreover, no additional power supply unit is required. They are delivered ready for connection with a mounted Schuko plug and moulded end cap.

Our 230V LED stripes can be dimmed from 100% to as low as 40% by a phase-on and phase-off dimmer to suit individual customer requirements or the respective ambient lighting.

Quick facts: 230V LED-Stripe

- Type: LED stripe with 230V AC voltage
- Number of LEDs: 120 LED/m
- Light colour:
3,000 K (warm white) / 4,000 K (neutral white)
- Length: available as 15m or 50m roll



SOLUTION 2: COB LED STRIPES

With COB technology, the LED chips sit directly on a carrier board, which allows the LEDs to be positioned much more closely. For this reason, COB LED stripes are much more suitable for creating a homogeneous light pattern. Our new COB stripes are optionally available as flexible white light stripes with flexible control between 2,700 K and 6,500 K or as RGB versions with single colours or mixed colours.



Quick facts: COB LED-Stripe

- Type: LED stripe with 230V AC voltage
- LED count:
576 LED/m (white) / 840 LED/m (RGB)
- Light colour:
2,700 K - 6,500 K (white) / RGB
- Length: 5m roll

- ▲ Homogeneous white in all colours: COB LED stripe with 576 LEDs per running metre, tunable between 2,700 K and 6,500 K.
- ◀ Everything in, everything on: 230V LED stripe with mounted Schuko plug and moulded end cap.

2 SMALL WORLDS OF LIGHT, BIG EFFECT

SPECIAL

A HOUSE HAS MANY ROOMS - AND SOMETIMES JUST AS MANY OUTDOOR AREAS THAT NEED TO BE SPECIFICALLY PLANNED AND SUPPLIED WITH LIGHT. FOR YOUR INSPIRATION, WE PRESENT FOUR LIGHTING SCENARIOS - FROM SMALL BALCONIES TO EXTENSIVE GARDEN AREAS.

Hygge, New Biedermeier - and finally the Corona pandemic. In recent years there has been a noticeable return to one's own home has taken place. The individual design of private living spaces is driven by countless specialised suppliers, magazines, blogs and social media influencers who provide a constant flow of inspiration with ever new ideas - from high-end to DIY. Lighting plays a decisive role here and benefits from lighting technology developments such as smart homes and battery-powered models.

What applies to one's own four walls also continues outdoors. What could be better than sitting outside at blue hour or after sunset on a balmy summer evening and supporting the relaxed mood with stylish outdoor lighting?

On the following pages, we present four typical outdoor scenarios, each with the appropriate lighting for your next outdoor projects.





Scenario 1: Front garden / entrance area

Whether it's a small front garden stripe or a spacious entrance area - this is often the first thing guests see. In our example, they are accompanied on their footpath by our Tucanae bollard luminaires and guided safely to the house at dusk and in the dark. To ensure that guests, postmen and parcel delivery men can easily find the right address, our simple, elegant Gianfar wall light can be quickly and easily transformed into a house number light thanks to the sticker set included. In addition, recessed floor spotlights set the scene for the façade of the house in an atmospheric way.



SAMAS SOLAR
Wall-mounted luminaire

SOCKET TOWER
with luminaire

SAMAS SOLAR 340
Floor lamp



ARCTURUS I
Wall-mounted luminaire

ROBI FLEX
Wall light

Szenario 2: Terrace

The terrace area is framed by three free-standing luminaires, each around 48 cm high, which also serve as a socket tower (IP67-certified) and provide power for electrical devices - from smartphone chargers to electric barbecues - via two connections each. Samas Solar and ARCTURUS I wall-mounted luminaires were mounted on the side walls. Additional light is provided by two Robi Flex surface-mounted wall luminaires (winner of the RedDot Design Award) mounted at the same height, which, thanks to their swivelling head plate, illuminate in a more planar or accentuated manner as required. Mobile light, wherever you need it, is promised by the solar-powered Samas Solar floor lamps, dimmable at the touch of a finger, which cut an excellent figure both on the floor and on tables.

COLT
Surface-mounted spotlight

BALL LIGHT
Accent light



GROUND RECESSED SPOT



Szenario 3: Garden

In the garden, it is important to emphasise the natural surroundings and to place trees and plants in the right light. In our example, several ground recessed spotlights around the birch create an impressive play of light and shadow in the branches. For smaller bushes and objects, the surface-mounted spotlights of the COLT series are suitable, illuminating individually placed shrubs discreetly and precisely and adding depth to the delicate palisade lattice around the garage extension. Accents along the footpath are provided by our free-standing spherical luminaires, which shine in different white tones or RGB colours with the appropriate light source and can be dimmed - of course also smartly programmed for automatically changing lighting scenes.

YOUR OBJECT IN 3D

OUR NEW SERVICE: LIGHTING DESIGN AND 3D VISUALISATION FOR PRIVATE HOUSES AT A FLAT RATE.

Decorative pendant luminaires in the dining room, recessed wall spotlights along the stairs, linear lighting solutions for open kitchen areas or outdoor lighting for terraces and walkways - the possibilities of our constantly growing product portfolio are almost endless. However, even experienced lighting and electrical professionals sometimes find it difficult to communicate the planned lighting concepts to their customers in such a way that a precise, three-dimensional impression of the lighting situation(s) is created.





For this reason, DEKO-LIGHT now offers its customers a special, extended service that noticeably simplifies daily lighting practice:

For a flat rate of 249 euros (plus VAT), we will advise you on the lighting design of your project on the basis of our huge product portfolio and create a 3D visualisation of the light distribution according to the lighting data for each individual luminaire. The offer applies to private houses with a planned area of up to approx. 180 m². For the calculation and 3D visualisation, we use the leading DIALux lighting DIALux lighting design software.

You are interested?

Then contact your DEKO-LIGHT field service representative. They will explain the next steps to you and will be happy to answer any questions you may have.

Checklist: We accompany you from the idea to visualisation

- 
Object data
 You send us floor plans, elevations, electrical plans and other important information about the object.
 (materials used, requirements, styles).
- 
Luminaire selection
 You make the luminaire selection from our portfolio or get advice from our experts.
- 
Luminaire placement
 You determine where the individual luminaires are to be placed. Here, too, we will be happy to advise you.
- 
3D visualisation
 We calculate the light distribution and create the 3D visualisation for you.



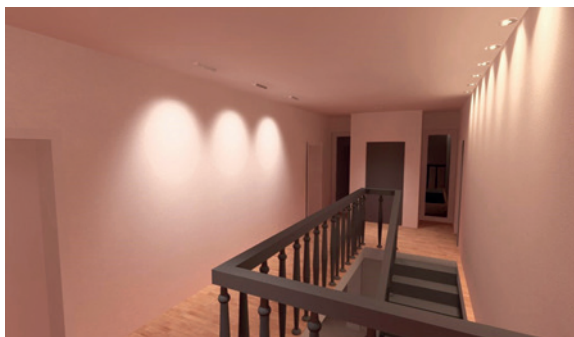
Ground floor supervision



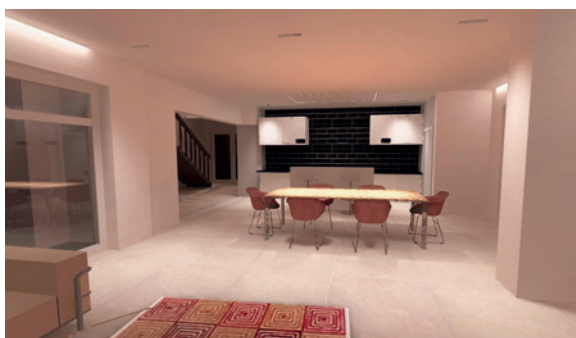
1. floor supervision



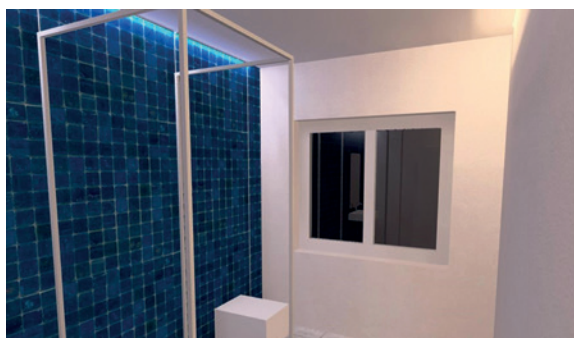
Ground floor entrance



1. floor hallway



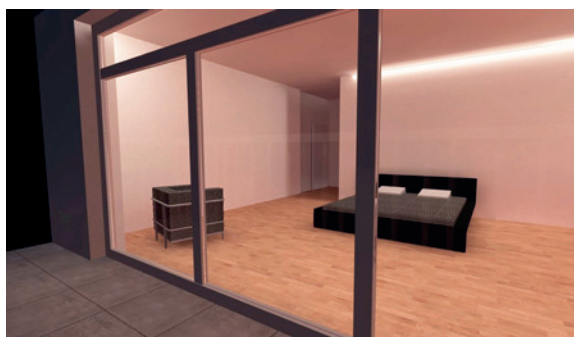
Ground floor living room



1. floor bathroom

Free lighting design

From a purchase value of 1,000 euros net, we will credit the flat rate of 249 euros back to you, so that in most cases you will not incur any additional costs, but will receive free lighting planning and visualisation. free of charge!



1. floor main bedroom

TRADESPEOPLE

NOWADAYS, COMMERCIAL LUMINAIRES - ALSO KNOWN AS TECHNICAL LUMINAIRES - ARE MUCH MORE THAN JUST FUNCTIONAL LIGHT.

Of course, industrial luminaires in production halls, warehouses, offices & co. must still primarily comply with clearly defined guidelines and standards, for example to ensure safety at the workplace or in public spaces. At the same time, new lighting technologies and findings from various scientific disciplines have greatly expanded the demands placed on commercial luminaires. HCL (Human Centric Lighting) and freedom from glare according to UGR are only two of the keywords that contribute to the quality of modern lighting solutions. In addition, the aesthetic component also plays an important role: thanks to the triumphant advance of LEDs, manufacturers today have far more design freedom in the development of technical luminaires.



On the following pages, we would like to give you an overview of our extensive range of commercial luminaires and present two absolute highlight products that have already proven themselves in numerous office environments. You will also find an overview of the most important properties and values for commercial luminaires and much more.

Commercial Lights – The catalogue

When you opened the current issue of SpotOn, it must have already fallen into your hands: our new segment catalogue for commercial and technical luminaires. Here you will find all luminaires and lighting solutions for use in a wide variety of commercial applications.

For you as a DEKO-LIGHT customer, commercial luminaires should be nothing new, because DEKO LIGHT has always had technical luminaires in its range. In this context, however, we have to admit that we have not always communicated the special added value of these luminaires to you in the best possible way. From HF sensors that achieve 100,000 switching cycles where many luminaires only offer 50,000 to IK values in the range of 8 to 10 - our commercial luminaires offer you the decisive safety when implementing your projects.

Trust in the advantages of our commercial luminaires and pass on this added value to your customers!

We wish you many aha-moments when browsing through our segment catalogue and look forward to supporting you with your projects in the future. And with a bit of luck, your reference project will also be in one of the next issues of SpotOn magazine...

THE MOST IMPORTANT FEATURES OF COMMERCIAL LUMINAIRES



IK-VALUE

In addition to the IP protection class, you should also keep an eye on the IK value of a luminaire, which is increasingly required within the scope of tenders and for installations in public spaces. The IK value (or IK impact resistance rating) indicates how impact-resistant a luminaire or certain components are. IK00 offers no protection against external mechanical stress, IK10 or IK10+ means that the luminaire can withstand a 5 or 10 kg test weight from a distance of 40 or 50 cm.



DALI-DIMMABLE

Luminaires that can be dimmed via DALI can be perfectly integrated into lighting/object management systems. The big advantage lies in the wiring: via DALI, all luminaires in a line can be individually addressed and controlled. But this variant is also suitable for individual luminaires: DALI dimmers without an address exist for this purpose, which address the power supply unit directly. The good news: most systems on the market already have DALI interfaces.



LIGHT COLOUR SELECTABLE

Luminaires with the designation "CCT Dip" allow you to change the light colour via a small dip switch (usually in the steps 3000K / 4000K / 5000K). With their high application flexibility, CCT Dip luminaires offer customers who are still unsure about the light colour an enormous decision-making aid - and incidentally reduce your stock requirements.



HCL

HCL stands for "Human Centric Lighting" and means the simulation of lighting situations according to the biological day-night rhythm of humans. HCL matches artificial light indoors to natural daylight and promotes well-being, mood and health. Numerous DEKO-LIGHT luminaires can already be integrated into an HCL control system to adjust the light colours to the biorhythm. In addition, several LED stripes in different light colours can also be combined in one profile and thus integrated into the HCL lighting design.



UGR-VALUE

The smaller the UGR value, the more glare-free a luminaire emits its light. Especially in office areas, you should use luminaires with a UGR value of less than 19 to avoid disturbing reflections. When determining the UGR value of a complete room, additional factors such as the wall colour(s) and the surface finish play a role.

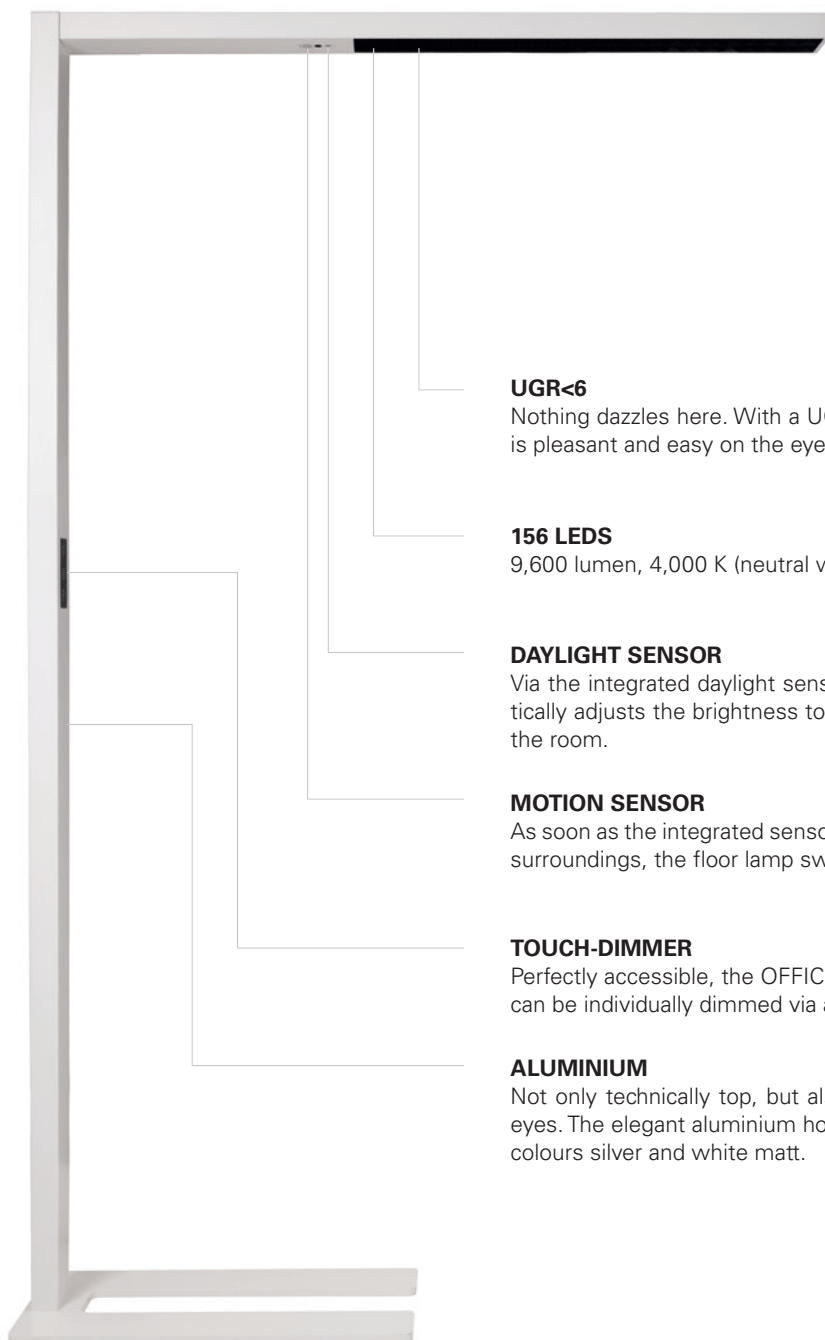


COLOUR RENDERING INDEX RA

The colour rendering index Ra describes the measure of the correspondence of the perceived light colour between an existing lighting situation and a reference light source. The smaller the deviation, the better the colour rendering. A light source with Ra 100 reproduces all colours exactly. The lower the Ra value, the less precisely the colours are reproduced.

OFFICE THREE MOTION

The OFFICE THREE MOTION is already a classic in our portfolio - a modern, minimalist office floor lamp with innovative control technology and sophisticated functions.

**UGR<6**

Nothing dazzles here. With a UGR value of less than 6, it is pleasant and easy on the eyes to work for hours.

156 LEDS

9,600 lumen, 4,000 K (neutral white)

DAYLIGHT SENSOR

Via the integrated daylight sensor, the luminaire automatically adjusts the brightness to the daylight conditions in the room.

MOTION SENSOR

As soon as the integrated sensor detects movement in its surroundings, the floor lamp switches on automatically.

TOUCH-DIMMER

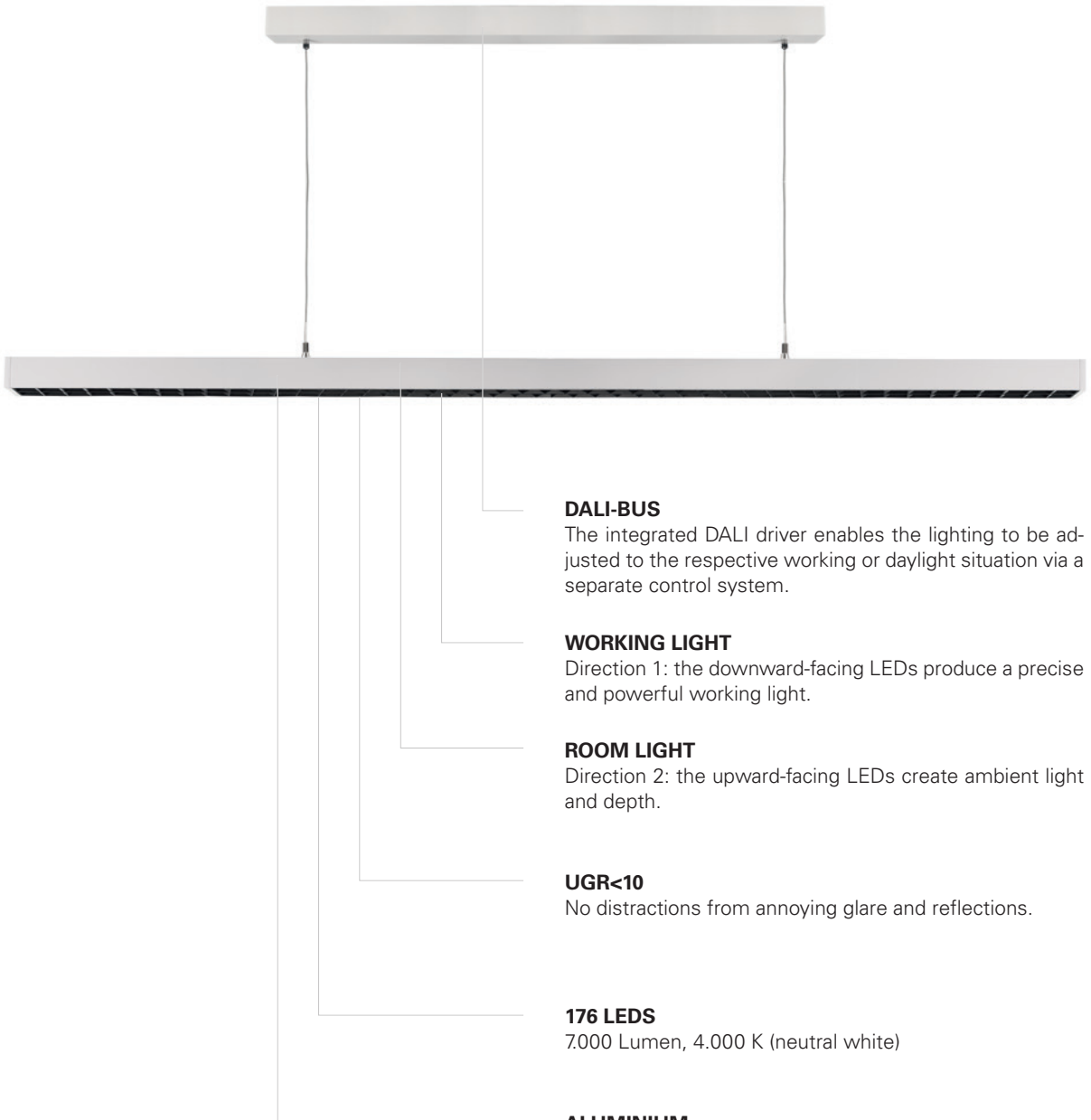
Perfectly accessible, the OFFICE THREE MOTION can be individually dimmed via a touch field.

ALUMINIUM

Not only technically top, but also visually a feast for the eyes. The elegant aluminium housing is available in colours silver and white matt.

OFFICE THREE

The OFFICE THREE pendant luminaire is the ideal complement to the OFFICE THREE MOTION, but can also illuminate workplaces fully and glare-free on its own - now with integrated DALI 2.0!



DALI-BUS

The integrated DALI driver enables the lighting to be adjusted to the respective working or daylight situation via a separate control system.

WORKING LIGHT

Direction 1: the downward-facing LEDs produce a precise and powerful working light.

ROOM LIGHT

Direction 2: the upward-facing LEDs create ambient light and depth.

UGR<10

No distractions from annoying glare and reflections.

176 LEDS

7.000 Lumen, 4.000 K (neutral white)

ALUMINIUM

Matching the floor lamp, the aluminium housing of the OFFICE THREE is also available in the colours silver and white.

3 INTERNATIONAL SALES – NEW SET-UP

COMPANY

We would like to take this opportunity to introduce our new set-up of the international sales team. Mrs. Mirjam Gebhard, who also has an extensive working experience within the lighting world, has joined us as well on 01.02.21, and will join the international sales team of Lisa Renz and Marcus Ziemer.

We are glad to announce our new set-up of individual country responsibilities. Your personal sales manager will support you from beginning to end in all commercial and product related matters and will remain at your disposal. Please find below the corresponding contact information.



Mirjam Gebhard

T. +49 7248 9271 604
m.gebhard@deko-light.com



Lisa Renz

T. +49 7248 9271 603
l.renz@deko-light.com



Marcus Ziemer

T. +49 7248 9271 605
m.ziemer@deko-light.com

You already have a project or article related question? Please do not hesitate to get in touch with. We are looking forward to a mutually beneficial cooperation.

Albania	Lisa Renz
Andorra	Mirjam Gebhard
Asia	Marcus Ziemer
Austria	Marcus Ziemer
Belgium	Mirjam Gebhard
Bosnia-Herzegovina	Lisa Renz
Bulgaria	Mirjam Gebhard
Croatia	Mirjam Gebhard
Cyprus	Lisa Renz
Czech Republic	Marcus Ziemer
Danmark	Marcus Ziemer
Estonia	Lisa Renz
Finland	Marcus Ziemer
France	Mirjam Gebhard
Greece	Lisa Renz
Hungary	Marcus Ziemer
Ireland	Marcus Ziemer
Iceland	Marcus Ziemer
Italy	Lisa Renz
Latvia	Lisa Renz
Liechtenstein	Lisa Renz
Lithuania	Lisa Renz
Luxembourg	Lisa Renz
Malta	Lisa Renz
Montenegro	Mirjam Gebhard
Netherlands	Lisa Renz
Norway	Marcus Ziemer
Poland	Marcus Ziemer
Portugal	Mirjam Gebhard
Romania	Lisa Renz
Russia/Ukraine	Mirjam Gebhard
Sweden	Marcus Ziemer
Switzerland	Lisa Renz
Serbia	Lisa Renz
Slovakia	Mirjam Gebhard
Slovenia	Lisa Renz
Spain / Balearic Islands	Mirjam Gebhard
Turkey	Lisa Renz
United Kingdom	Marcus Ziemer
non-EU countries	Marcus Ziemer

AARON - ACAMAR - ACHERNAR - ACRUX
 ADEBAR - ADHARA - AGUDO
 ALBALDAH - ALBALI - ALCYONE
 ALGIEBA - ALGOL - ALHENA - ALIOTH
 ALKES - ALTAIR - ALTAIS - ALUDRA
 ALWA - ALYA - ALZIRR - ANCHA - ANKAA
 ANTLIAE - APODIS - APOLLON - AQUILAE
 ARBINTO - ARCTURUS - ARIANNA
 ARIETIS - ARKTUR - ARNEB - ASTEROPE
 ATIK - ATIS - ATRIA - AURIGAE - AYLEEN
 BAHAM - BEACON - BECRUX - BEID
 BELLATRIX - BENGALA - BERMUDA
 BESSMA - BOOTIS - BRACHIUM - BRAHE
 BUNDA - CAN - CANUM - CATA
 CENTAURI - CETI - CHERTAN - CORVI
 CRUCIS - CURSA - CYGNI - DATO
 DENEK - DIPHDA - DRACONIS - ELECTRA

JOURNEY TO THE STARS

EVERY MANUFACTURER HAS ITS OWN PECULIARITIES
 WHEN IT COMES TO NAMING ITS PRODUCTS AND SE-
 RIES. AT DEKO-LIGHT, WE HAVE BEEN LOOKING UP AT
 THE SKY FOR MANY YEARS AND ARE CONSTANTLY DI-
 SCOVERING NEW STARS IN THE FIRMAMENT...

DID YOU KNOW?

Our products are named after stars, constellations and other cosmic objects.
 From A for AARON to Z for ZANIAH.

MY DEKO-LIGHT FAVOURITE PRODUCT

THE PEOPLE AT DEKO-LIGHT ARE NOT ONLY LIGHTING PROFESSIONALS, BUT ALSO REAL FANS OF OUR LIGHTING SOLUTIONS. TO LAUNCH THE NEW SECTION, JANICE HESSE (MARKETING) REVEALS HER FAVOURITE PRODUCT FROM THE DEKO-LIGHT PORTFOLIO.



My favourite DEKO-LIGHT product is the Lacertae table lamp. Even when I saw it first time I saw it as a sample on a colleague's desk, I immediately thought it was really square, practical, good, so to speak. No frills, high-quality material material: of course I had to examine it immediately while my colleague explained the explained the features.

Besides the simple, modern design, I think it's great that the light comes from above. So I can simply place the Lacertae on the table and there's no glare. Moreover, the light can be dimmed in three steps. As I am a fan of practical things, I also like the fact that I can charge it with a conventional USB cable. And if that wasn't convincing enough, I can even charge my smartphone with it.

If there is a successor, I would like to see different sizes and colours. It would also be cool if it had speakers...

For the next SpotOn issue, I nominate Daniel Merz from Product Management. Let me tell you this much: it will be colourful.



UNITED INTO THE FUTURE

DIRK GEBHARD (MARKETING) IN AN INTERVIEW ON THE COMPANY'S NEW ONE-BRAND STRATEGY OF THE COMPANY.

What goals is DEKO-LIGHT pursuing with the new one-brand strategy?

In the past, we have repeatedly found that our different brands with partly overlapping product portfolios have caused confusion among our customers. From now on, we want to handle this differently - more clearly and transparently, so that our customers know: DEKO-LIGHT is a universal manufacturer of lighting and lighting technology and, with its own brand of the same name, covers everything that electrical engineers and lighting designers need for their projects. This creates clarity and thus also trust for long-term cooperation.

What does this mean for the large product portfolio?

Whether decorative or functional luminaires, LED stripes, controllers or profiles - we have always set ourselves the goal of offering the right professional, innovative solution for every application.

What has become or will become of the old, previous brands?

The changeover from the old brands - Reprofil, kapego and kapegoLED - to our own brand has already been underway for around two years. Now we are presenting our product range holistically under the DEKO-LIGHT brand. However, in order to avoid confusion by third parties, we still retain the trademark rights for the old brands.

What else changes for the customer?

Nothing changes for the customer - on the contrary: he benefits even more from the new clarity of our portfolio. This goes hand in hand with our full-service promise. We always want to offer the best possible service for our customers. This starts with the availability of the products, continues with individual technical and project advice, assembly and extends to our five-year manufacturer's warranty - also for products that have already been installed.



**PRETTY
IN
PETROL...**

**... OUR
ACCENT COLOUR**

C = 70

M = 20

Y = 25

K = 0

Word and picture mark:



For the word mark, the Univers font was used in the Bold and Light styles in capitals. However, this font is only used in conjunction with the figurative mark. The size of the capitals is based on the "D" of the logo. The distance between the word mark and the figurative mark is as wide as the "E".

4

LIGHTING SOLUTIONS

LINEAR CONNECTION

ONE HOUSE, TWO COMPANIES, DIVERSE LED STRIPEES - OUR LATEST COMBI REFERENCE COMBINES COMMERCIAL & PRIVATE.



A house can be so much more than just a living space for people. When private and commercial use are combined under one roof, it is important to either strictly separate the spatial transition or allow it to flow into each other in order to increase well-being. In the case of Frieze Elektrotechnik and Megatron Eventtechnik, we think Mario Frieze has opted for a happy medium - and used plenty of linear light and other luminaires from DEKO-LIGHT to achieve this.

On the ground floor of the two-storey new building is a large kitchen and living area. To illuminate the modern, merging space with its dominant screed and exposed concrete look in a slim and stylish way, Frieze relies on a mixture of Kardan frames for the neutral white Modular System COB recessed ceiling luminaires and various flexible 12V and 24V LED stripes in neutral, cool and warm white. All LED stripes are mounted in AU-02-15 U-profiles in the ceiling.



Lighting solutions in use

- 840123 LED-Stripe NW 10mm
- 840347 LED-Stripe WW+CW 10mm
- 840147 LED-Stripe RGB 10mm
- 840160 LED-Stripe NW 5mm
- 840164 LED-Stripe WW 8mm
- 840167 LED-Stripe CW 8mm
- 840180 LED-Stripe NW 8mm
- 370163 AU-02-15 profile black
- 970741 AU-05-15 IP profile aluminium natural
- 843051 Controller DALI PWM Dimmer CV 2CH
- 342092 Pendant luminaire LED Panel transparent
- 565334 Recessed ceiling luminaire Modular Sys. COB
- 930092 Cardan frame für Modular System COB

The upper floor consists of several private rooms, hallway and bathroom, through whose ceilings neutral white LED stripes in 4,000 K and 4,200 K with 5 and 8 mm widths also run. Special attention was required for the bathroom, which is also suitable for the wet room area with its approximately 15 metres of IP profiles. Here, too, Frieese picks up on the lighting design from the ground floor and places two Kardan frames with matching COB recessed ceiling luminaires in front of the large washbasin and mirror.



Project participants

Frieese Elektrotechnik
Ortsstrasse 12
77955 Ettenheim
+49 7822 861 09 20
frieese@elektro-frieese.de

Megatron Eventtechnik
Heiligenhäußle 2
77955 Ettenheim
+49 77822 895 585

4

LIGHTING SOLUTIONS

NEW FLUORESCENT

WHAT CONNECTS A CHURCH AND A DENTIST'S PRACTICE? LIGHTING SOLUTIONS FROM DEKO-LIGHT AND THE MODERN LIGHTING CONCEPTS OF LEUCHTSTOFF* LIGHTING MANUFACTURE.

Dark, sober and uninviting - these attributes used to apply to both church buildings and old dentist's offices. But times have long since changed: Not only medical practices are laying the foundation for a friendly and open atmosphere with modern furnishing and lighting concepts - new church buildings and renovations are also increasingly tending towards modern, airy and light-flooded concepts.

One decisive factor is the possibilities offered by LED technology. LED luminaires and linear lighting solutions can be integrated into rooms in the most diverse and discreet ways without distracting from the essential - be it devotion or medical treatment. In the following, we present one current example each of church and practice lighting, both planned and realised by leuchtstoff* Manufaktur für Licht based in Cottbus.



PARISH CHURCH OF ST. BARBARA (ORTRAND)

The parish church of St. Barbara in Ortrand, Brandenburg, perfectly combines classical church architecture with modern lighting elements. Built as a late Gothic hall church in the early 18th century, the interior of the church was "purged" and redesigned several times in the course of the 20th century. In order to leave the multi-layered historical alterations of the listed church recognisable, leuchtstoff* around founder, managing director and lighting architect Stefan Restemeier opted for a purist and contemporary lighting design.

"The church as a space of inner gathering was to be experienced as a space of clarity and tranquillity," explains Restemeier. "That's why we deliberately focused on a manageable number of lighting scenarios and luminaire types." In total, the lighting redesign comprised five areas: the nave, the galleries, the winter church under the organ loft, the pulpit and the choir room.

"For the galleries, the pulpit and the choir room, we installed concealed DEKO-LIGHT track systems of the Linear 60 type. One LED linear stripe each creates a basic illumination, which is accentuated by two Luna 40 directional spots. This creates a homogeneous and objective lighting atmosphere, especially for the altar area. At the same time, individual objects such as the organ prospect or altar are appropriately highlighted."

Below the galleries, LED linear luminaires are flush with the ceiling girders so as not to disturb the existing architecture and still provide the necessary illuminance for reading hymn books by worshippers. The winter church below the organ loft can be separated by a glass curtain for smaller services, celebrations and Bible studies if required, and is flexibly illuminated by 13 dimmable LED ring lights (leuchtstoff*'s own creation) in the beamed ceiling. The ring lights are also found as the main lighting in the nave in the form of two suspended versions with an impressive 300 cm diameter.

"All liturgical places are staged by three-phase Linear 60 track systems. Concealed behind the belt arches, they take a back seat so as not to impair the effect of the expressive altar room composition "Through Suffering to Resurrection" by the artist Press," Stefan Restemeier continues. "The ease of use of the individual lighting components was tailored to the church's wide range of users. In addition to the basic lighting, only five dimming zones have been created, all of which can be controlled self-explanatorily by means of push-dim operation. The 4,000 K LED elements correspond to the objective lighting mood aimed for by the congregation and also underline the basic artistic-architectural concept."



Bildquelle: Mak Lagodzki

St. Barbara Church: Products in use

- 14 x Luna 40 LED-Power track spotlight
- 08 x Linear 60 LED-Power track spotlight

Produkte von leuchtstoff:

- Ring light TheO 300
- Ring light TheO 3000

DENTAL PRACTICE

Anyone who enters the dental practice of Dr. Rühitz in Cottbus looks into the distance - more precisely: at a multi-part LED surface light (leuchtstoff* own creation) with a maritime sailboat motif. So if you only go to the dentist with a grumbly stomach, your mood should be "brightened up" a little at the entrance. In order to keep the friendly atmosphere, leuchtstoff* opted for unobtrusive LED Panel Round II recessed luminaires for the foyer and corridors, which contrast with the discreet grid ceiling in various sizes and bathe the room in pleasant warm white light.



In the waiting room, the Sculptoris ceiling surface-mounted and pendant luminaires in the 45 and 60 versions ensure relaxed waiting before moving on to the treatment rooms. Here, the LED panel recessed luminaires support functional and precise medical lighting.

Dental practice: Products in use

- 18x Insert louvre light 5.500 K (100032)
- 5x Recessed ceiling luminaire LED Panel Round II 8 2.800K (565208)
- 22x Recessed ceiling luminaire LED Panel Round II 16 2.800K (565212)
- 1x Recessed ceiling luminaire LED Panel Round II 30 2.800K (565216)
- 1x Recessed ceiling luminaire Sculptoris 45 3.000K (348103)
- 1x Pendant light Sculptoris 45 4.000K (342123)
- 1x Pendant light Sculptoris 60 3.000K (342124)
- 2x Surface light with digital print



Project participants

Planning & Realisation:

leuchtstoff* – Manufaktur für Licht
Wernerstraße 18
03046 Cottbus
+49 355 121 58 36
leuchtstoff.de

4

LIGHTING SOLUTIONS



▼ The recessed floor spotlights of the LINE series create an impressive column appearance





STONE MEETS WATER

OUR NEW OUTDOOR REFERENCE: A PRIVATE HOUSE WITH A LARGE GARDEN, LOTS OF NATURAL STONE AND A CENTRAL POND - PLANNED AND IMPLEMENTED BY GÄRTEN VON KLEIN.

In our Outdoor Special from page 28 onwards, we gave you ideas on how to conjure up a lot of lighting effect on balconies, terraces and in front gardens with just a few luminaires. For our current garden reference, other conditions apply: To set the scene for the long natural stone walls, you need more than just a few spotlights. Fortunately, the team at Gärten von Klein has a lot of experience with large, open gardens away from the suburban norm - and plenty of DEKO-LIGHT luminaires at their disposal to creatively implement individual customer wishes.

Lighting solutions in use

- 730262 LINE II WW
- 730292 LINE I WW
- 730434 LINE V WW
- 730465 FLOOD COB 50 AMBER
- 740006 FIARA
- 732075 FLOOD RF II
- 732109 COLT 15W COB

4

LIGHTING SOLUTIONS



- ▲ LINE I WW ground recessed spotlights with stainless steel cover support the visual separation of lawn area and stone border along the shrub bed.
- ▼ Here, something more is needed: LINE V WW recessed spotlights with 1,100 lm per unit also make the natural structure of the stone wall visually tangible.





▲ The large pond with stone inserts is given even more depth by the FIARA underwater lights.

Gärten von Klein

Gärten von Klein specialises in the consultation, planning and installation of outdoor facilities. Since 2003, the company based in Bergisch Gladbach has been realising exclusive garden dreams and also stages elaborate light planning. From creative design to technical planning and execution, the Gärten von Klein team accompanies its customers with a high self-imposed standard of courtesy, punctuality and attentiveness.

Gärten von Klein GmbH & Co. KG
Gut-Asselborn Nr. 1
51429 Bergisch Gladbach
+49 2207 848 942
info@gaertenvonklein.de



▲ Günter Klein
Managing Director Gärten von Klein

5 UNITED IN THE ASSOCIATION

FORUM

THERE IS NEWS: DEKO-LIGHT IS A MEMBER OF THE OF THE GERMAN LIGHTING SOCIETY.

As of this year, DEKO-LIGHT is an official corporate member of the German Lighting Society (LiTG). As a member of the Baden district group, we are now part of a network of people interested in light from the fields of architecture, lighting and electrical planning, crafts, product design, medicine, art and many more, who have one thing in common: to make the overriding topic of "light" known in all its varieties, technologies and effects and to exchange ideas with other experts.

LiTG brings together scientists and academics from research and teaching, engineers from development, production, project planning and sales, members of federal and state ministries and local authorities, people with an affinity for light from the fields of architecture and interior design, lighting and electrical planning, crafts, product design, medicine and art, as well as students from these fields. Its corporate members include scientific institutions, professional associations and organisations, companies from all areas of the lighting industry, municipal administrations, energy suppliers, architecture, engineering and lighting planning offices.

LiTG also has a lot to offer in the area of further education! For example, the LiTG further training course to become a "certified lighting expert" provides all those interested and experienced in lighting with comprehensive knowledge about light and lighting, covering technical and design aspects in equal measure. After all, anyone who wants to be active in design must first master the technical basics. On the other hand, lighting design on a purely normative-technical basis neglects central practical aspects such as spatial effect, aesthetics or quality of stay.

Deutsche Lichttechnische Gesellschaft e.V.

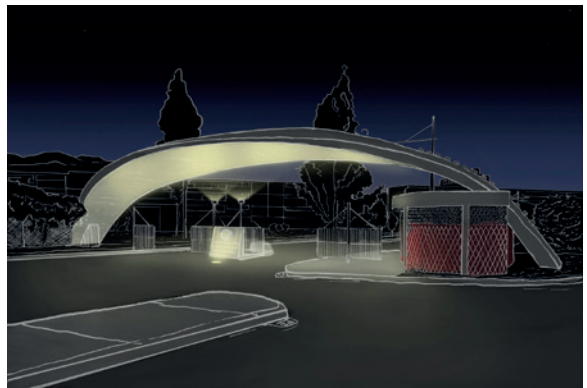
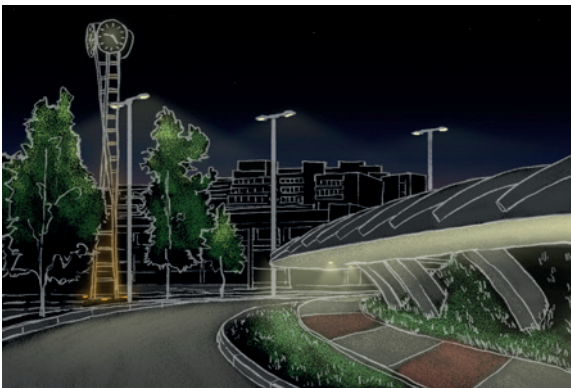
The LiTG goes back to the Deutsche Beleuchtungstechnische Gesellschaft (German Lighting Society) founded in Berlin in 1912. Today, the non-profit association is divided into 15 district groups and a district association with currently around 2,100 members. As a network and knowledge platform for all those interested in lighting from a wide variety of fields, the LiTG provides advice and offers a wide-ranging programme of events on lighting applications, developments, products, services, regulations, standards and laws. The specialist areas of the LiTH Technical and Scientific Committee (TWA) include outdoor and indoor lighting, light management, light sources and luminaires, measurement, evaluation and calculation and more.

www.litg.de



Focus on young talent

A particularly important topic for us is the promotion of young talent. For example, DEKO-LIGHT supports the participants of the "LUXI" prize at the LICHTWOCHE Munich with luminaires and lighting technology. LiTG also looks back on a long tradition of promoting young talent and awards the "LiTG Young Talent Award Light | Technology | Design", a renowned young talent award for outstanding interdisciplinary theses and dissertations with a focus on light.



▲ Award winner 2021: Luis Villasana with his Master's thesis "Lighting the Heritage in Public Spaces"

Further training at LiTG - The next online dates

See & Measure

8./9./11. Juni 2021

Light sources & luminaires

15./16./18. Juni 2021

For more information, see: litg.de/LiTG/Weiterbildungstermine-2021.html

»With the LiTG membership, we are consistently continuing our further education consistently. In addition, we are pleased to pass on the extensive information and networking opportunities of LiTG to our customers, in order to jointly promote new lighting innovations..«

Janosch Sohns, Managing director at DEKO-LIGHT

OLD LIGHT, NEW VALUES

NOT ONLY THE CUSTOMER DEMANDS QUALITY - RECENTLY ALSO THE LEGISLATOR. WE EXPLAIN THE EFFECTS OF THE EU ECODESIGN DIRECTIVE 2021 ON LUMINAIRE PRODUCTION.

It was already mentioned in the penultimate issue of SpotOn: the new Ecodesign Directive 2021 of the European Union. Since it came into force, manufacturers of artificial lighting have been subject to numerous new requirements. With the expansion of our measurement laboratory, we are already taking these requirements into account and are and prove compliance with the specified limit values for stroboscopic effects and light flicker for each for each product concerned.

Light flicker and stroboscopic effects are referred to as temporal light artefacts (TLA). While comparatively simple measurements were sufficient until now - such as determining the flicker index and the degree of modulation - these have no longer been sufficient since 2021. In order to determine potential TLA effects, the In order to include potential TLA effects, frequency-dependent sensitivity or the waveform of the emitted light in the assessment, the European Union has redefined stroboscopic effects and light flicker and at the same time introduced new measurement parameters to assess the quality of luminaires or artificial light.

Light flicker refers to the visual fluctuations perceived by people of a light stimulus whose luminance or spectral distribution fluctuates over time. The fluctuations can be periodic or non-periodic and be caused by the light source itself, the power source or other influencing factors. The Ecodesign Directive 2021 introduces the standardised parameter "Pst LM": "st" stands for "short term" and "LM" for "light flickermeter method". The value $Pst LM = 1$ means that an average observer detects the flicker with a probability of 50 %.

The stroboscopic effect refers to the change in motion perception of a static observer in a non-static environment. observer in a non-static environment due to a light stimulus whose luminance or spectral distribution fluctuates over time. Here, too, the fluctuations can be periodic or non-periodic and can be caused by the light source itself, the current source or other influencing factors. other influencing factors. The measurand for the stroboscopic effect is the standardised quantity "SVM". (stroboscopic visibility measure). $SVM = 1$ is the visibility threshold for an average observer.



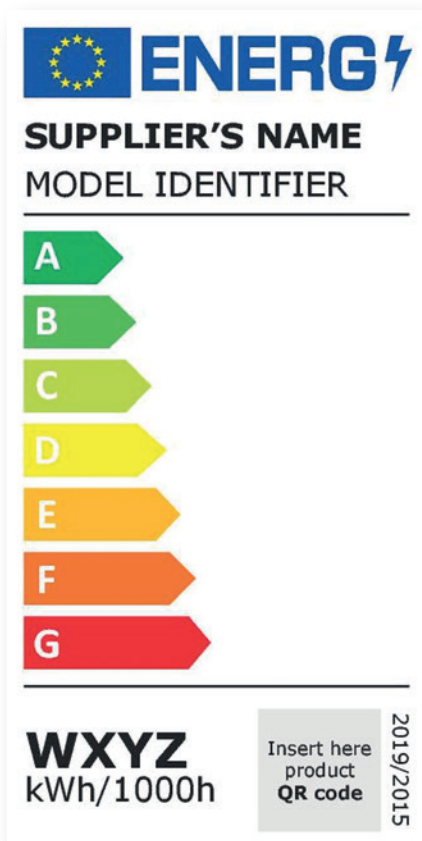
EUROPÄISCHE UNION

Europäische Struktur- und Investitionsfonds

Ecodesign Directive 2021

The European Union's Ecodesign Directive 2021 includes numerous regulations for various electronics sectors and serves to prevent waste or increase resource efficiency. In this context, the directive regulates the longer and faster availability of spare parts in order to make products more repairable and retrofittable and thus more sustainable. At the same time, a European data room is to be created for the central bundling of product information. Under the keyword "digital product passport", information on materials, spare parts or also on proper disposal is to be summarised in future and used for all phases along the product life cycle.

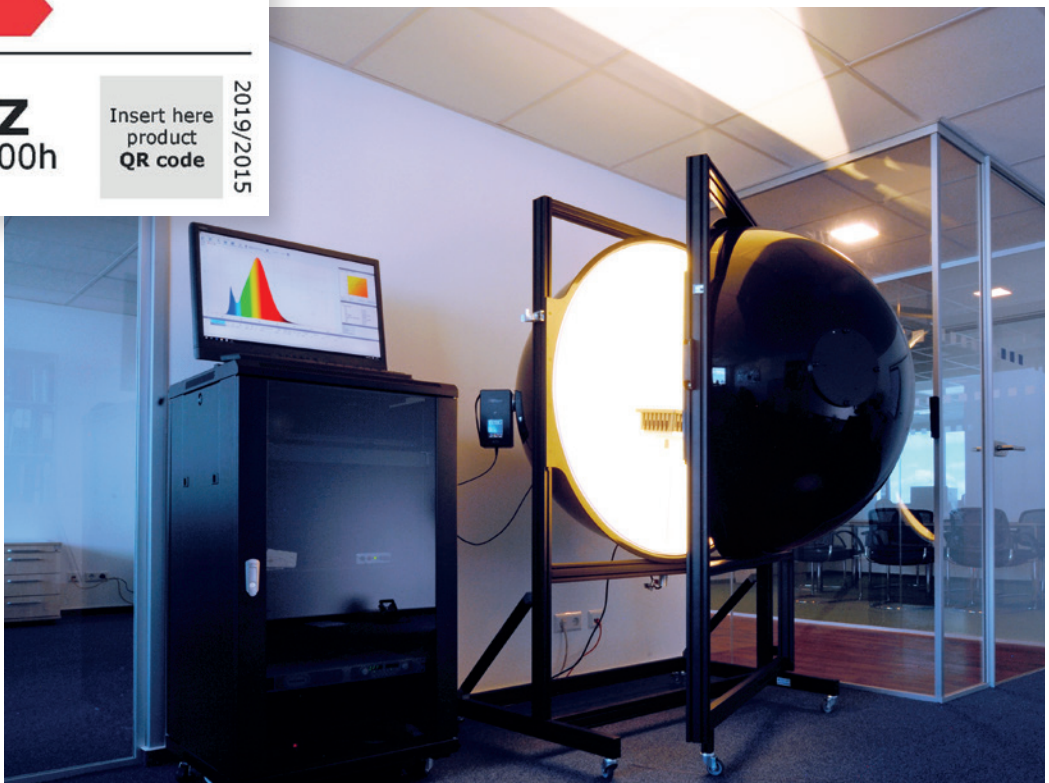
Further information: ec.europa.eu



The new, expanded parameters also include a new scale for determining the energy efficiency value: the previous classification from A+++ to E gives way to a new gradation from A to G. For electrical appliances such as refrigerators, washing machines and televisions, the scale has already been in effect since 1 March 2021; for luminaires, it will not come into effect until 1 September.

A new generation of labels

Good to know: The EU's new energy labels have been with a view to the future. The upper classes A and B remain free for the time being, so that manufacturers have scope for further technological advances without the need to adapt the energy label again in the near future.



MARCS

TECHNIC CORNER

THE DEKO-LIGHT TECHNOLOGY BLOG

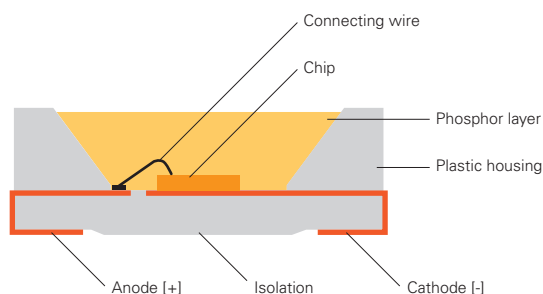


LED STRIPEES: WORTH KNOWING ASSEMBLY & MOUNTING

ON THE FOLLOWING PAGES, OUR TECHNOLOGY EXPERT MARC DICKER PROVIDES VALUABLE TIPS ON HANDLING LED STRIPEES FOR LINEAR LIGHTING APPLICATIONS.

At DEKO-LIGHT, LED chips in a wide variety of sizes, power classes, quantities and spacings are installed on the respective LED stripees. On this basis, we can offer an enormous range of LED stripees in 12V, 24V, 48V and 230V. We will show you what you should pay attention to during assembly, handling and installation in practice in order to be able to guarantee flawless operation of the LED stripees for years.

Cross-section of an LED chip:



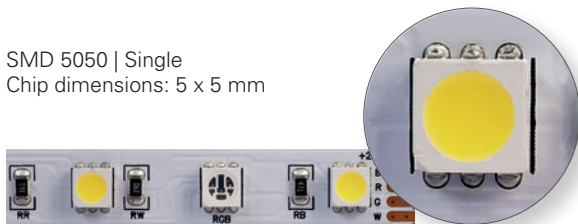
DEKO-LIGHT Quality promise

Our LED stripees are subjected to constant quality control during the production process. This is the only way we can guarantee the well-known high level of quality for our linear lighting solutions.

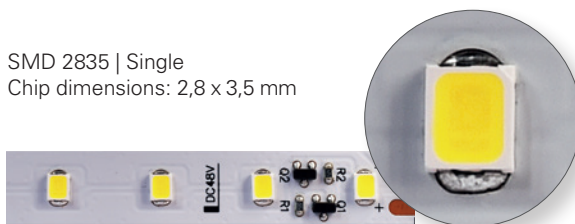
WHAT DO THE NUMBERS ON AN LED STRIPEES MEAN?

The numbers clearly indicate the size (width & length) and shape of the LED chips installed on a carrier (stripee). For example, the LED chip 5050 - one of the most frequently used standard LED chips worldwide - has a length and width of 5 mm each. An LED chip 2835 has a width of 2.8 mm and a length of 3.5 mm.

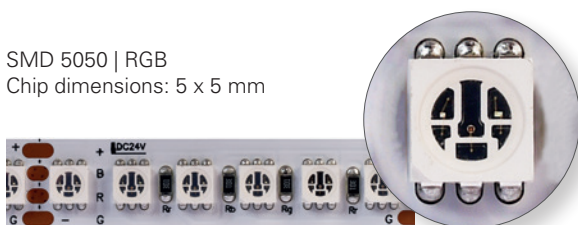
SMD 5050 | Single
Chip dimensions: 5 x 5 mm



SMD 2835 | Single
Chip dimensions: 2,8 x 3,5 mm



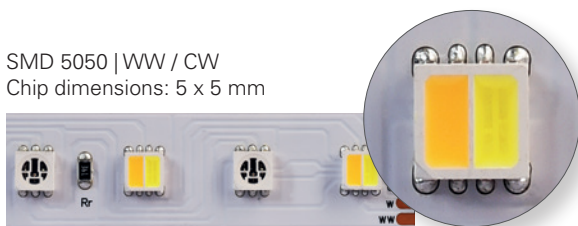
SMD 5050 | RGB
Chip dimensions: 5 x 5 mm



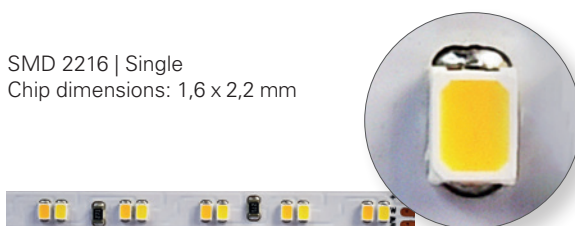
SMD 2835 | WW / CW
Chip dimensions: 2,8 x 3,5 mm



SMD 5050 | WW / CW
Chip dimensions: 5 x 5 mm



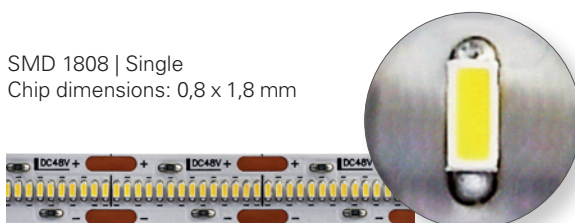
SMD 2216 | Single
Chip dimensions: 1,6 x 2,2 mm



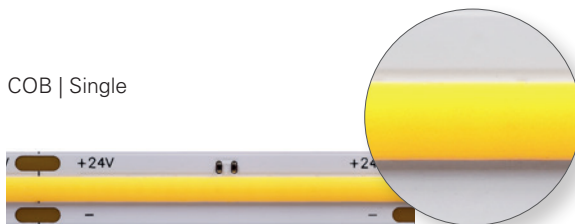
SMD 3528 | Single
Chip dimensions: 2,8 x 3,5 mm



SMD 1808 | Single
Chip dimensions: 0,8 x 1,8 mm



COB | Single



DEKO-LIGHT assembly service

Did you already know? DEKO-LIGHT offers a comprehensive assembly service for linear lighting solutions. Plan your projects individually, reduce your installation time, avoid sources of error and use your LED stripes including the matching profiles in your projects in a tailor-made way.

ASSEMBLY & HANDLING

LED stripes are usually assembled, i.e. shortened to individually required lengths, in order to be able to be installed in the respective project. The stripes must be cut correctly to avoid the failure of individual chips or segments. The following illustrations show the correct handling:

RIGHT: The LED stripes are shortened at the right place. shortened [marked points with copper plates]. With a correctly cut LED stripes, all segments light up completely.



WRONG: The LED stripes is not cut at the marked point. The incorrectly cut LED stripes is damaged, causing a complete segment to fail and no longer light up.



MOUNTING & HANDLING

After the LED stripes have been assembled correctly, there are other sources of error that must be avoided during handling and installation. In the following, we show you the four most frequently occurring problems:

An LED strip with a torn connection cable and LED chip. This damage is caused, among other things, by twisting, bending, being pressed on by objects, friction or excessive force when pulling through inlets and bushings.



RIGHT: The LED stripes have been mounted taking into account the minimum bending radius. This ensures that the stripe is not damaged during and after mounting.



WRONG: The LED stripes have been bent. A mistake that often occurs due to carelessness or over-corner mounting. The consequence: solder joints, LED chips and/or carriers have been damaged and the damaged segment no longer lights up.



RIGHT: If an LED stripe is to be laid vertically around a corner, the bending radius cannot usually be maintained. To avoid the previously explained problem, the stripe should be cut at a marked point and led over the corner by means of a soldered wire connection.



WRONG: The LED stripes were bent within the segment. The consequence: solder joints, LED chips and/or carriers have been damaged and the damaged segment begins to flicker or no longer lights up permanently.



RIGHT: If the LED stripes are to be laid horizontally around a corner, the stripe must be cut at a marked point and led around the corner by means of a soldered wire connection.



WRONG: The LED stripes were bent horizontally around the corner. bent. The consequence: solder joints, LED chips and/or carriers have been damaged and the damaged segment begins to flicker or no longer lights up permanently.





MIRAM - HEAD MAGNETIC LIGHT

346025 Head magnetic light | Aluminium die cast
white | WW | 3000 K | 196 lm | Ra >80 | 2,20 W
IP54 | H x Ø: 30 x 120 mm
Touch-Sensor
98,95 €

346033 Head magnetic light | Aluminium die cast
grey | WW | 3000 K | 196 lm | Ra >80 | 2,20 W
IP54 | H x Ø: 30 x 120 mm
Touch-Sensor
98,95 €

346032 Head magnetic light | Aluminium die cast
black | WW | 3000 K | 196 lm | Ra >80 | 2,20 W
IP54 | H x Ø: 30 x 120 mm
Touch-Sensor
98,95 €

346035 Head magnetic light | Aluminium die cast
yellow | WW | 3000 K | 196 lm | Ra >80 | 2,20 W
IP54 | H x Ø: 30 x 120 mm
Touch-Sensor
98,95 €

346034 Head magnetic light | Aluminium die cast
Red | WW | 3000 K | 196 lm | Ra >80 | 2,20 W
IP54 | H x Ø: 30 x 120 mm
Touch-Sensor
98,95 €

346036 Head magnetic light | Aluminium die cast
blue | WW | 3000 K | 196 lm | Ra >80 | 2,20 W
IP54 | H x Ø: 30 x 120 mm
Touch-Sensor
98,95 €

346037 Head magnetic light | Aluminium die cast
green | WW | 3000 K | 196 lm | Ra >80 | 2,20 W
IP54 | H x Ø: 30 x 120 mm
Touch-Sensor
98,95 €



MIRAM - WALL BRACKET FOR MAGNETIC LIGHT

930618 Wall bracket | Aluminium die cast
white | W x H: 85 x 96 mm
16,95 €

930620 Wall bracket | Aluminium die cast
grey | W x H: 85 x 96 mm
16,95 €

930619 Wall bracket | Aluminium die cast
black | W x H: 85 x 96 mm
16,95 €

930622 Wall bracket | Aluminium die cast
yellow | W x H: 85 x 96 mm
16,95 €

930621 Wall bracket | Aluminium die cast
Red | W x H: 85 x 96 mm
16,95 €

930623 Wall bracket | Aluminium die cast
blue | W x H: 85 x 96 mm
16,95 €

930624 Wall bracket | Aluminium die cast
green | W x H: 85 x 96 mm
16,95 €



MIRAM - PENDANT FOR MAGNETIC LIGHT

930625 Pendant | Aluminium die cast
white | W x H: 205 x 185 mm
Ceiling suspension: 2190 mm
29,95 €

930627 Pendant | Aluminium die cast
grey | W x H: 205 x 185 mm
Ceiling suspension: 2190 mm
29,95 €

930626 Pendant | Aluminium die cast
black | W x H: 205 x 185 mm
Ceiling suspension: 2190 mm
29,95 €

930629 Pendant | Aluminium die cast
yellow | W x H: 205 x 185 mm
Ceiling suspension: 2190 mm
29,95 €

930628 Pendant | Aluminium die cast
Red | W x H: 205 x 185 mm
Ceiling suspension: 2190 mm
29,95 €

930630 Pendant | Aluminium die cast
blue | W x H: 205 x 185 mm
Ceiling suspension: 2190 mm
29,95 €

930631 Pendant | Aluminium die cast
green | W x H: 205 x 185 mm
Ceiling suspension: 2190 mm
29,95 €



MIRAM - STAND FOR MAGNETIC LIGHT

930611 Stand | Aluminium die cast
white | H x Ø: 270 x 102 mm
28,95 €

930613 Stand | Aluminium die cast
grey | H x Ø: 270 x 102 mm
28,95 €

930612 Stand | Aluminium die cast
black | H x Ø: 270 x 102 mm
28,95 €

930615 Stand | Aluminium die cast
yellow | H x Ø: 270 x 102 mm
28,95 €

930614 Stand | Aluminium die cast
Red | H x Ø: 270 x 102 mm
28,95 €

930616 Stand | Aluminium die cast
blue | H x Ø: 270 x 102 mm
28,95 €

930617 Stand | Aluminium die cast
green | H x Ø: 270 x 102 mm
28,95 €



ALGIEBA

346038 Table light | Aluminium die cast
white | WW | 3000 K | 212 lm | Ra >80 | 2,20 W
IP54 | L x W x H: 175 x 92 x 330 mm
149,95 €

346040 Table light | Aluminium die cast
grey | WW | 3000 K | 212 lm | Ra >80 | 2,20 W
IP54 | L x W x H: 175 x 92 x 330 mm
149,95 €

346039 Table light | Aluminium die cast
black | WW | 3000 K | 212 lm | Ra >80 | 2,20 W
IP54 | L x W x H: 175 x 92 x 330 mm
149,95 €



CRUCIS

346041 Table light | Aluminium die cast
white | WW | 3000 K | 165 lm | Ra >80 | 2,20 W
IP54 | L x W x H: 100 x 100 x 292 mm
99,95 €

346043 Table light | Aluminium die cast
grey | WW | 3000 K | 165 lm | Ra >80 | 2,20 W
IP54 | L x W x H: 100 x 100 x 292 mm
99,95 €

346042 Table light | Aluminium die cast
grey | WW | 3000 K | 165 lm | Ra >80 | 2,20 W
IP54 | L x W x H: 100 x 100 x 292 mm
99,95 €



ALKES S + S MOTION

731138 Wall-mounted luminaire | Aluminium die cast
dark grey | WW | 3000 K | 920 lm | Ra >80 | 21 W
IP65 | L x W x H: 200 x 126 x 184 mm
89,95 €

731139 Wall-mounted luminaire | Aluminium die cast
dark grey | WW | 3000 K | 735 lm | Ra >80 | 21 W
IP65 | L x W x H: 200 x 126 x 184 mm | incl. motion sensor
109,95 €



ALKES L + L MOTION

731140 Wall-mounted luminaire | Aluminium die cast
dark grey | WW | 3000 K | 1720 lm | Ra >80 | 36 W
IP65 | L x W x H: 297 x 165 x 240 mm
139,95 €

731141 Wall-mounted luminaire | Aluminium die cast
dark grey | WW | 3000 K | 1720 lm | Ra >80 | 36 W
IP65 | L x W x H: 297 x 165 x 240 mm | incl. motion sensor
169,95 €



ALBALDAH MOTION

731132 Wall-mounted luminaire | Aluminium die cast grey | WW | 3000 K | 645 lm | Ra >80 | 13,50 W
IP65 | L x Ø: 220 x 120 mm | incl. motion sensor
89,95 €



ADEBAR MOTION

731137 Wall-mounted luminaire | Aluminium die cast grey | excl. Illuminant | E27 | 1x max. 60 W
IP44 | L x Ø: 218 x 160 mm | incl. motion sensor
89,95 €



ARBINTO

733061 Bollard light | Aluminium die cast Blackgrey RAL 7021 | excl. Illuminant | 1x max. 60 W
IP44 | L x B: 800 x 120 mm
99,95 €



ALHENA

733057 Bollard light | Aluminium die cast Blackgrey RAL 7021 | WW | 3000 K | 2965 lm | Ra >80 | 29 W
IP65 | L x Ø: 900 x 110 mm
209,95 €

733058 Bollard light | Aluminium die cast Blackgrey RAL 7021 | WW | 3000 K | 3900 lm | Ra >80 | 37 W
IP65 | L x Ø: 1500 x 110 mm
289,95 €



SAIPH

341244 Wall-mounted luminaire | Aluminium black | excl. Illuminant | E27 | 1x max. 60 W
IP23 | L x W x H: 170 x 149 x 280 mm
42,95 €



SARGAS

341245 Wall-mounted luminaire | Aluminium black | excl. Illuminant | E27 | 1x max. 60 W
IP23 | L x W x H: 178 x 151 x 318 mm
42,95 €



JABBAH

731128 Wall-mounted luminaire | Aluminium die cast dark grey | WW | 3000 K | 915 lm | Ra >80 | 13 W
IP65 | L x W x H: 150 x 150 x 150 mm
169,95 €



JABBAH UP AND DOWN

731127 Wall-mounted luminaire | Aluminium die cast dark grey | WW | 3000 K | 1850 lm | Ra >80 | 25 W
IP65 | L x W x H: 150 x 150 x 150 mm | Dip-Switch dimmable auf 60% | Radiation pattern two-way
229,95 €



ACHERNAR DOWN

731130 Wall-mounted luminaire | Aluminium die cast Blackgrey RAL 7021 | excl. Illuminant | GU10 | 1x max. 50 W
IP65 | L x H x Ø: 108 x 95 x 63 mm
34,95 €



ACHERNAR UP AND DOWN

731131 Wall-mounted luminaire | Aluminium die cast Blackgrey RAL 7021 | excl. Illuminant | GU10 | 2x max. 50 W
IP65 | L x H x Ø: 158 x 95 x 63 mm | Radiation pattern two-way
44,95 €



MULTI OUTDOOR CABLE CONNECTOR / CONNECTING SLEEVE

930571 waterproof cable gland M25 | IP68 [2 m]
for 2 cables 4-14 mm [Adapter sleeves included]
for 2-5 grains 0,5-4 mm² | L x W x H:
112,53 x 29,50 x 32,56 mm
15,95 €



MULTI OUTDOOR Y-CABLE CONNECTOR / CONNECTING SLEEVE

930573 waterproof cable gland M25 | IP68 [2 m]
for 3 cables 4-14 mm [Adapter sleeves included]
for 2-5 grains 0,5-4 mm² | L x W x H:
139,71 x 71,88 x 32,56 mm
17,95 €



MULTI OUTDOOR CABLE DISTRIBUTOR 2-FACH

930578 waterproof cable gland M20 | IP68
for 2 cables 5-12 mm [Adapter sleeves included]
for grains 0,5-2,5 mm² | Ø x H: 65,33 x 46,31 mm
Cover quick-release screw connection [screwless]
9,95 €



MULTI OUTDOOR CABLE DISTRIBUTOR 2-FACH

930576 waterproof cable gland M20 | IP68 [2 m]
for 2 cables 5-12 mm [Adapter sleeves included]
for grains 0,5-2,5 mm² | L x W x H:
138,20 x 42,77 x 35,70 mm
Cover screwed on [screws included]
11,95 €



MULTI OUTDOOR CABLE DISTRIBUTOR 4-FACH

930575 waterproof Cable gland M25 | IP68 [2 m]
for 2-4 cables 4-14 mm [Adapter sleeves included]
for grains 0,5-4,0 mm² | L x W x H:
112,54 x 93,30 x 35,30 mm
Cover screwed on [screws included]
17,95 €



MULTI OUTDOOR CABLE DISTRIBUTOR 10-FACH

930574 waterproof Cable gland M25 | IP68 [2 m]
for 2-10 cables 4-14 mm [Adapter sleeves included]
for grains 0,5-4,0 mm² | L x W x H:
182,95 x 135,30 x 49,10 mm
Cover screwed on [screws included]
39,95 €



2835-120-230V-3000K-15M-SILIKON

840310 LED-Stripee

WW | 3000K [± 150K] | 120 LED/m | 17,60 W/m
90 lm/W | 1582 lm/m | Ra 95 | Pixel Pitch 8,33 mm | IP65
Cutting option 100 mm / 12 LED
L x W x H: 15000 x 15/19 x 7,50/13,10 mm

749,95 €



COB-576-24V-2700-6500K-5M

840374 LED-Stripee

WW / CW | 2700-6500K [± 150K] | 576 LED/m | 10,30 W/m
93 lm/W | 960 lm/m | Ra 95,20 | Pixel Pitch 1,74 mm | IP20
Cutting option 27,77 mm / 16 LED
L x W x H: 5000 x 10 x 2,20 mm

299,95 €



SAMAS SOLAR

731122 Wall-mounted luminaire | Aluminium die cast
dark grey | WW | 3000 K | 130 lm | Ra >80 | 2,20 W
IP54 | L x W x H: 154 x 140 x 290 mm | Twilight switch
High-efficiency solar panel | Li-Ion-Accu | 3,70V | 2200 mAh
99,95 €



SAMAS SOLAR

733049 Table light | Aluminium die cast
dark grey | WW | 3000 K | 130 lm | Ra >80 | 2,20 W
IP54 | L x W x H: 140 x 140 x 340 mm | Twilight switch
High-efficiency solar panel | Li-Ion-Accu | 3,70V | 2200 mAh
Ground spike
89,95 €



COLT 4W COB

732104 Surface-mounted spotlight | Aluminium die cast
Granitegrey RAL 7026 | WW | 3000 K | 240 lm | 4 W
IP65 | L x H x Ø: 65 x 120 x 50 mm
LED-Chip replaceable | 2 m connecting cable with IP44
socket | 2 glasses [transparent, milky] | 1 Wabenfilter
124,95 €



COLT 30W COB

732110 Surface-mounted spotlight | Aluminium die cast
Granitegrey RAL 7026 | WW | 3000 K | 2320 lm | 30 W
IP65 | L x H x Ø: 111,80 x 260 x 131 mm
LED-Chip replaceable | 2 m connector cable with IP44 so-
cket | 2 glasses [transparent, milky] | 1 Wabenfilter
289,95 €



BALL LUMINAIRE

836011 decorative light | Polyethylen [LLDPE]
white | dimmable via Illuminant | E27
1x max. 20 W | IP65/44 | Ø: 250 mm | Ground spike
49,95 €



RECESSED FLOOR LIGHT

730289 Recessed floor light | Stainless steel
silver | WW | 3000 K | 700 lm | 10 W
IP67 | H x Ø: 111 x 173 mm
asymmetric light emission | trafficable
199,95 €



SOCKET TOWER ILLUMINATED

733054 Socket tower | Aluminium die cast
dark grey | WW | 3000 K | 150 lm | Ra >80 | 4 W
IP44 | L x W x Ø: 478 x 100 mm
Luminaire switchable | 2 sockets [max. 3650 W]
149,95 €



ROBI FLEX

731068 Wall-mounted luminaire | Aluminium die cast
dark grey lackiert | WW | 3000 K | 700 lm | Ra >80 | 10 W
IP54 | L x W x H: 120 x 45 x 125 mm
tiltable 0° - 90°
149,95 €



GIANFAR

731119 Wall-mounted luminaire | Aluminium die cast
traffic grey RAL 7043 | WW | 3000 K | 930 lm | Ra >80 | 12 W
IP54 | L x W x H: 161 x 59 x 211 mm
99,95 €



ROBI FLEX

733007 Bollard light | Aluminium die cast
dark grey | WW | 3000 K | 700 lm | Ra >80 | 10 W
IP54 | L x W x H: 35 x 80 x 1000 mm
tiltable 0° - 90°
199,95 €



TUCANAE

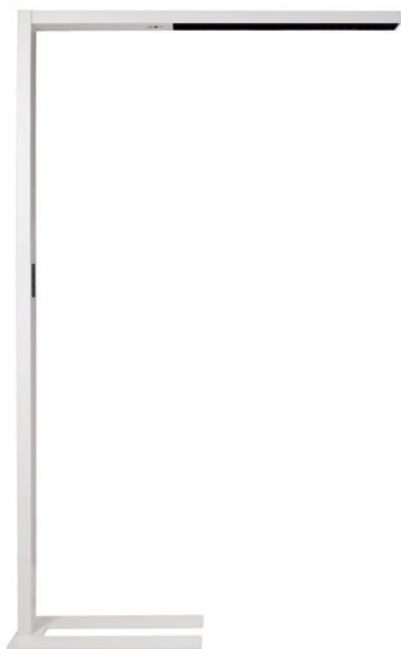
733031 Bollard light | Aluminium die cast
dark grey | WW | 3000 K | 1650 lm | Ra >80 | 16 W
IP65 | B x H: 206 x 1000 mm
209,95 €



OFFICE THREE

342140 pendant lamp | Aluminium
Signalwhite RAL 9003 | NW | 4000 K | 7000 lm | Ra >90
58 W | UGR <10 | L x W x H: 1179 x 64 x 35 mm
max. Suspension: 1200 mm
499,95 €

342141 pendant lamp | Aluminium
Whitealuminium RAL 9006 | NW | 4000 K | 7000 lm | Ra >90
58 W | UGR <10 | L x W x H: 1179 x 64 x 35 mm
max. Suspension: 1200 mm
499,95 €



OFFICE THREE MOTION

343024 Floor lamp | Aluminium
white matt | NW | 4000 K | 9600 lm | Ra >80
80 W | UGR <6 | L x W x H: 1950 x 64 x 1056 mm
dimmable via touch-sensor
Motion sensor | Twilight sensor
999,95 €

343023 Floor lamp | Aluminium
silver | NW | 4000 K | 9600 lm | Ra >80
80 W | UGR <6 | L x W x H: 1950 x 64 x 1056 mm
dimmable via touch-sensor
Motion sensor | Twilight sensor
999,95 €



LACERTAE USB

346009 Table light | Aluminium die cast
dark grey | WW | 3000 K | 460 lm | Ra >80 | 5 W
IP54 | L x W x H: 180 x 180 x 267 mm | dimmable
USB charging port | Li-Ion-Akku | 3,70V | 7800 mAh
139,95 €



2835-120-24V-4200K-5M

840123 LED-Stripee

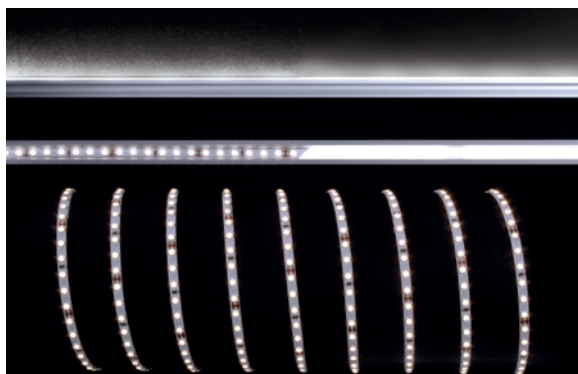
NW | 4200K [\pm 150K] | 120 LED/m | 20,00 W/m

73 lm/W | Ra >90 | Pixel Pitch 8,3 mm | IP20

Cutting option 50 mm / 6 LED

L x W x H: 5000 x 10 x 2 mm

199,95 €



3528-120-24V-4200K-5M

840160 LED-Stripee

NW | 120 LED/m | 8,50 W/m

75 lm/W | 770 lm/m | Pixel Pitch 8,3 mm | IP20

Cutting option 50 mm / 6 LED

L x W x H: 5000 x 5 x 3 mm

79,95 €



2835-120-24V-2700-6500K-5M-SILIKON

840347 LED-Stripee

WW+CW | 120 LED/m | 23,40 W/m

67 lm/W | 1569 lm/m | Pixel Pitch 8,33 mm | IP44

Cutting option 50 mm / 6 LED

L x W x H: 5000 x 10 x 2,6 mm

219,95 €



3528-120-12V-2700K-5M

840164 LED-Stripee

WW | 2700K [\pm 150K] | 120 LED/m | 7,00 W/m

81 lm/W | 570 lm/m | Ra 92,8 | Pixel Pitch 8,33 mm | IP20

Cutting option 25 mm / 3 LED

L x W x H: 5000 x 8 x 3 mm

89,95 €



5050-96-24V-RGB-5M

840147 LED-Stripee

RGB | 96 LED/m | 14,10 W/m

47 lm/W | 666 lm/m | Pixel Pitch 10,40 mm | IP20

Cutting option 62,50 mm / 6 LED

L x W x H: 5000 x 10 x 2 mm

173,95 €



3528-120-12V-6500K-5M

840167 LED-Stripee

CW | 6500K [\pm 150K] | 120 LED/m | 7,00 W/m

90 lm/W | 629 lm/m | Ra 92,7 | Pixel Pitch 8,3 mm | IP20

Cutting option 25 mm / 3 LED

L x W x H: 5000 x 8 x 3 mm

89,95 €



MODULAR SYSTEM COB

565334 Deckeneinbauleuchte | Aluminium die cast
Signal black RAL 9004 | NW | 4000 K | 3500 lm | Ra > 90
33 W | H x Ø: 116 x 93 mm
99,95 €

930092 Cardan frame | Aluminium
Plain white RAL 9010 | Ausschnittmaß: 130 x 130 mm
L x W x H: 140 x 140 x 43 mm
30,95 €



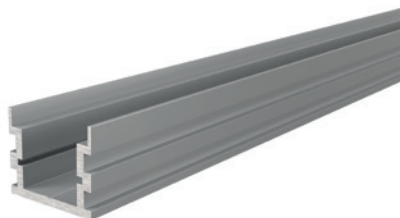
LED PANEL TRANSPARENT RUND

342092 Pendelleuchte | Aluminium
darkblack RAL 9005 | NW | 4000 K | 5600 lm | Ra > 80
UGR < 19 | 50 W | H x Ø: 12,50 x 580 mm
299,95 €



DALI PWM DIMMER 1/2 KANAL

843051 Controller
controller for 1-2 channel LED-Stripes [Single, WW/CW components] | dimmable via DALI-Bus IEC 62386 / Device Type DT6 | Overload / short circuit indication / safety shutdown
Dimensions L x W x H: 167 x 51 x 23 mm
max. 5A per channel | Power: 2x 120W (240W) bei 12V, 2x 240W (480W) bei 24V
84,95 €



AU-05-15

970741 IP-Profile accessible for LED-Stripes up to 15,6 mm
Aluminium | nature
L x W x H: 2000 x 24 x 20 mm
35,95 €



AU-02-15

970163 high U-Profile for LED-Stripes up to 16,3 mm
Aluminium | matt-black brushed
L x W x H: 2000 x 21 x 15 mm
25,95 €



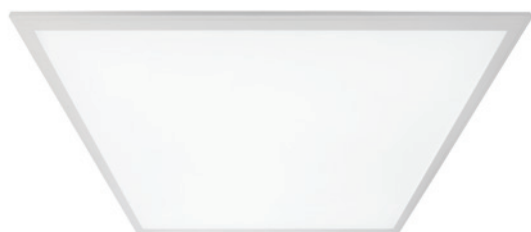
LUNA 40

707020 Power track spot | Aluminium die cast
plain white RAL 9010 | WW | 3000 K | 2520 lm | Ra >90 | 40 W
L x H x Ø: 201 x 168 x 120 mm | rotatable and swivellable
199,95 €



LINEAR 60

707046 Power track | Aluminium
Traffic white RAL 9016 | WW | 3000 K | 1655 lm | 19 W
L x W x H: 687 x 33 x 52 mm
109,95 €



CCT WW/CW

100032 Insert louvre light | Aluminium
Verkehrswhite RAL 9016 | WW+CW | 3000-5500 K | 3551 lm
Ra > 80 | 48 W | L x W x H: 620 x 620 x 10 mm
139,95 €



LED PANEL ROUND II 8

565208 Recessed ceiling luminaire | Aluminium
white | WW | 2800 K | 500 lm | Ra > 80 | 8 W
H x Ø: 25 x 90 mm
29,95 €



LED PANEL ROUND II 16

565212 Recessed ceiling luminaire | Aluminium
white | WW | 2800 K | 1200 lm | Ra > 80 | 16 W
H x Ø: 25 x 145 mm
59,95 €



LED PANEL ROUND II 30

565216 Recessed ceiling luminaire | Aluminium
white | WW | 2800 K | 1900 lm | Ra > 80 | 26 W
H x Ø: 25 x 220 mm
89,95 €



SCULPTORIS 45

342123 Pendant light | Aluminium
white matt | NW | 4000 K | 1700 lm | Ra > 80
26 W | H x Ø: 130 x 450 mm
199,95 €



SCULPTORIS 60

342124 Pendant light | Aluminium
white matt | VWV | 3000 K | 2600 lm | Ra > 80
40 W | H x Ø: 130 x 600 mm
239,95 €



SCULPTORIS 45

348103 Recessed ceiling luminaire | Aluminium
Signalwhite RAL 9003 | VWV | 3000 K | 1700 lm | Ra > 80
26 W | H x Ø: 130 x 450 mm
189,95 €



FIARA

740006 Underwater light | stainless steel
silver | WW | 3000 K | 1200 lm | 18,50 W
IP68 | L x W x H x Ø: 127 x 120 x 195 x 127 mm
10 m connection cable with Weipu IP67
339,95 €



COLT 15W COB

732109 Surface-mounted spotlight | Aluminium die cast
Blackgrey RAL 7021 | WW | 3000 K | 1090 lm | 15 W
IP65 | W x H x Ø: 88,30 x 220,00 x 110,50 mm
LED-Chip replaceable | 2 m Connection cable with IP44 plug
2 glasses [transparent, milky] | 1 Honeycomb filter
239,95 €



FLOOD RF II -30 RGB

732075 Surface-mounted spotlight | Plastic
Umbragrey RAL 7022 | RGB | 1060 lm | 30 W
IP65/IP44 | L x W x H: 178 x 81 x 215 mm
2 m Connection cable with IP44 plug
Radio remote control with min. 20 m range
229,95 €



FLOOD COB 50 AMBER

730465 Surface-mounted spotlight | Kunststoff
anthrazit | Amber | 710 lm | 30 W
IP65/IP44 | L x W x H: 200 x 98 x 253 mm
1 m Connection cable
199,95 €



LINE I WW

730292 Ground recessed luminaire | stainless steel
 silver | WW | 3000 K | 340 lm | 5,50 W
 IP67 | L x W x H: 195 x 63 x 65 mm
 asymmetric | trafficable
139,95 €



LINE II WW

730262 Ground recessed luminaire | stainless steel
 silver | WW | 3000 K | 730 lm | 10 W
 IP67 | L x W x H: 328 x 63 x 65 mm
 asymmetric | trafficable
199,95 €



LINE V WW

730434 Ground recessed luminaire | stainless steel
 silver | WW | 3000 K | 1100 lm | 18 W
 IP67 | L x W x H: 549 x 63 x 65 mm
 trafficable
299,95 €



HOW SMART DOES MAN HAVE TO BE?

For all those who have already forgotten: It wasn't just Corona that caused our social contacts to become more and more limited, because the grip on the mobile phone was already omnipresent before the virus. Of course we all want to go back to the restaurants, visit friends and go on holiday. But let's be honest: even without contact restrictions, you saw couples everywhere who were more preoccupied with their mobile phones than with their counterparts.

We want to become smarter and smarter, do more and more online. When we leave the house, our house notices this and adjusts itself to turn the temperature down slightly - no one is there. Smart home technology leads - especially in the commercial sector - leads to sometimes bizarre scenes. For example, blind controls are programmed centrally for the company location. It can happen that a watcher, or let's say "sighted person", sits on a building site all day to observe the course of the sun. When the sun reaches a certain position, the sun observer makes a call to the control centre and gives orders as to which windows are to be shaded. Only recently we had a shooting appointment in a particularly "smart" property. We ran all over the rooms and tried every switch and every setting, but it didn't help - the lights stayed dark.

In our private lives, we also spend a lot of time optimising our W-LAN and networking with various components. But what do we do when the network doesn't feel like it any more? Can you still cook without a microwave or Thermomix and can you control the brightness or change the colour of your lights without a network? Being smart is everything, but without smart everything is nothing?

I recommend that you use systems that also work without the Internet (for example, our Quasar module). Always have a fancy battery light, a good red wine, some cheese, olives, baguette and a tasty dip ready for times without internet. Believe me: women go for smart guys who can quickly conjure up a Spanish tapas evening instead of getting worked up over their non-buck smartphone. And really smart guys also go out to play football with their kids or grill a stick bread at the campfire.

Your (hopefully somewhat smart) Hartmut

Hartmut Rottke
Sales field service
T +49 7248 9271 532
M +49 176 444 788 68
h.rottke@deko-light.com

SPOT ON!

THE MAGAZINE

DEKO-LIGHT Elektronik Vertriebs GmbH

Auf der Hub 2 | 76307 Karlsbad

T +49 7248 9271 500 | F +49 7248 9271 550

deko@deko-light.com | deko-light.com

Managing Director: Janosch Sohns

EDITORIAL

vResponsible editor: Alexander Cevolani,

Event Edit | PR & Redaktion, www.eventedit.de

technical-scientific advice: Marc Dicker, Hartmut Rottke

CONCEPTION

Project management: Dirk Gebhard

LAYOUT

Layout / Design: Janice Hesse

PHOTOS

Pictures: Andris Balodis, Roman Schinzel

Seite 48: Maik Lagodzki

Seite 52 - 55: Jörg Küster

PRINT

Heinzmann Druck GmbH | Carl-Benz-Straße 6 | 76694 Forst

DEKO-LIGHT
Elektronik Vertriebs GmbH
Auf der Hub 2
76307 Karlsbad

T +49 7248 9271 500
F +49 7248 9271 550

deko@deko-light.com
deko-light.com
shop.deko-light.com