

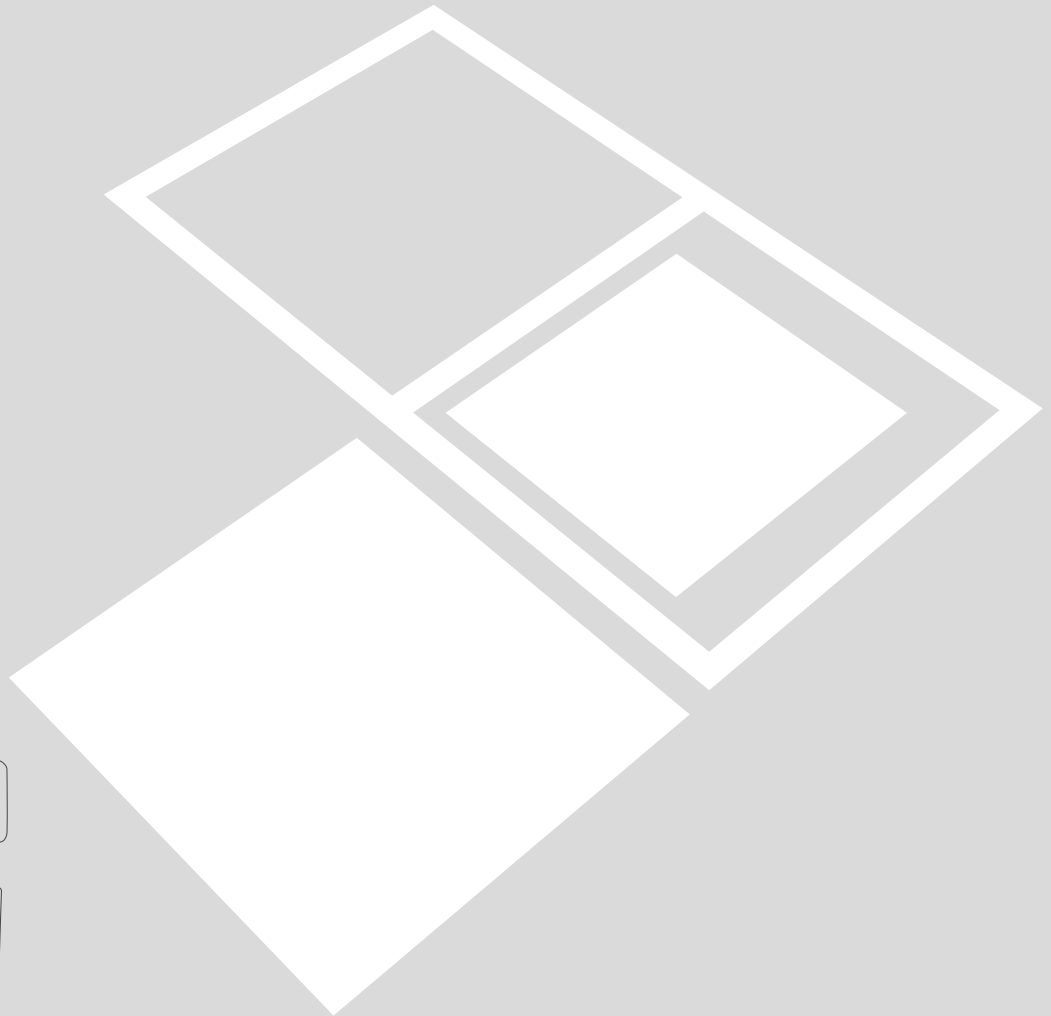
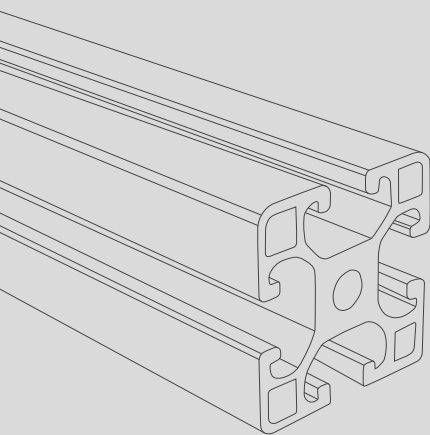
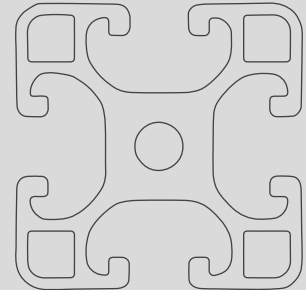


BEEWATEC

Processes connected with flexibility

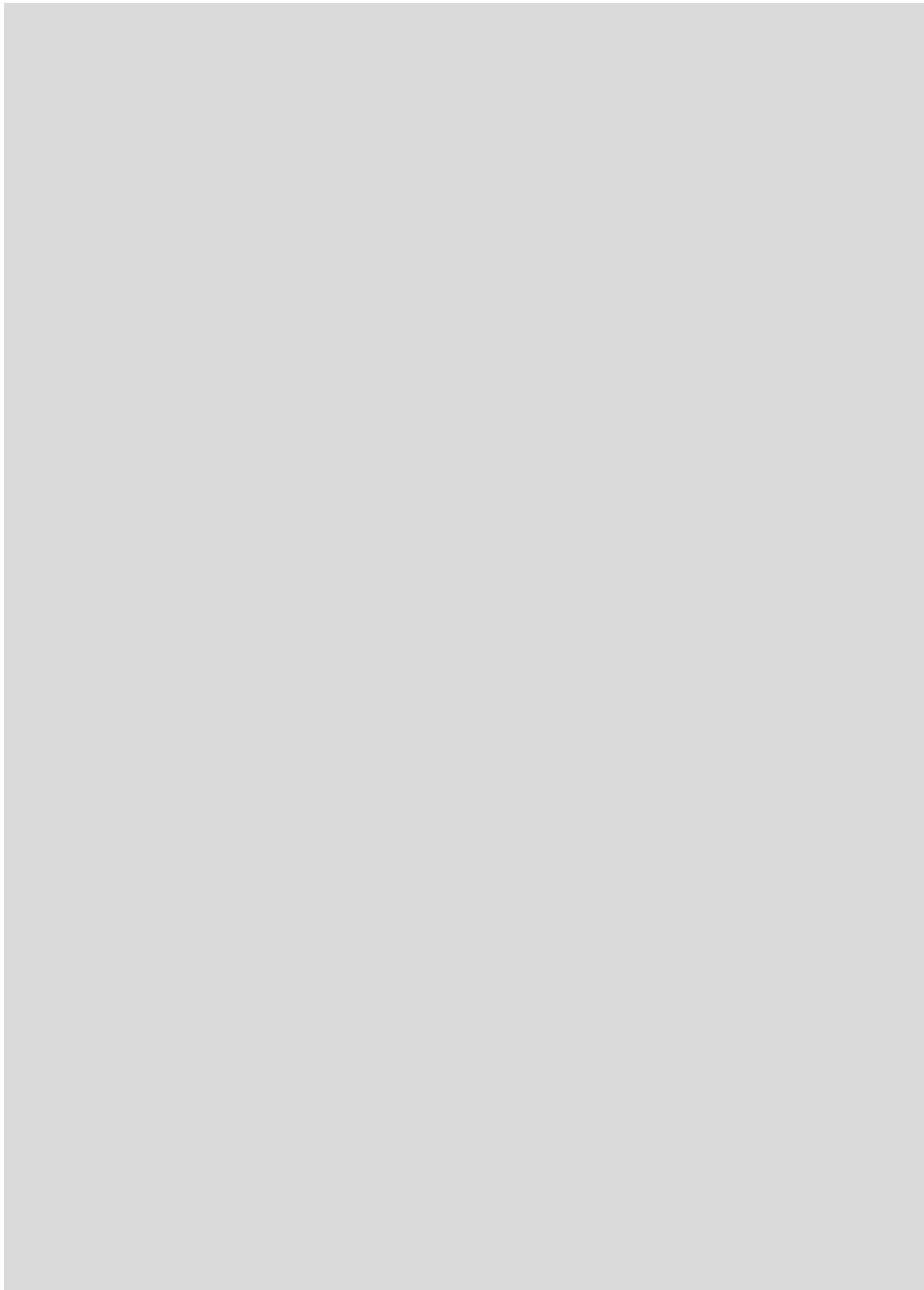
Standard aluminium 40x40 mm
groove 8 profile I

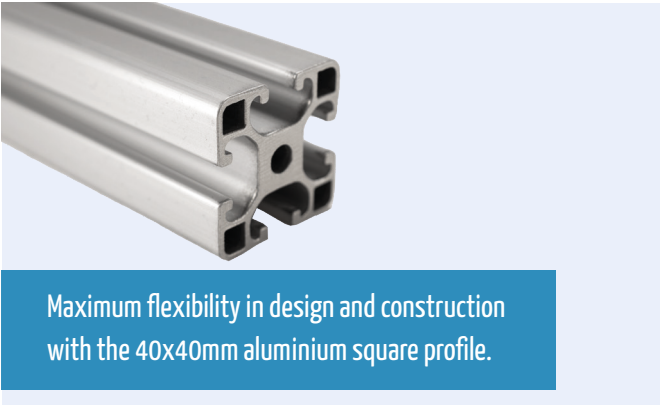
Profile, joints and add-on parts



LEAN PRODUCTION
with BeeWaTec
Be LEAN, use BEEWATEC







Maximum flexibility in design and construction with the 40x40mm aluminium square profile.

Aluminium square profile 40x40 mm

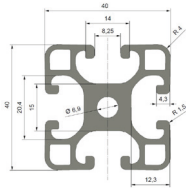
- Aluminium profile 40x40
- Lower cost and weight
- compatible with standard profil 40x40 mm **groove 8 mm**

P4040A-I Aluminium square profile 40x40 mm



Aluminium: 401735

- 4 x groove 8 mm
- Surface: natural anodised aluminium



Weight: 1,608 kg/m
Length: 4 m



A stable basis

Screw joint

- for right-angle connecting two aluminium profiles

Screw joint set

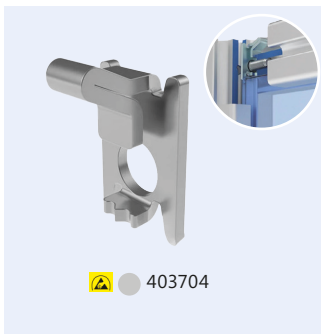


403697

- for right-angle connecting two aluminium profiles
- To tighten the joint, a clearance hole of at least 6.5 mm must be drilled in one profile.
- Teeth break up the anodised layer and create a secure, ELF electrostatically discharged connection
- Material: steel, galvanised
- incl. 1x rotation lock, screw M8

Weight: 20,7 g

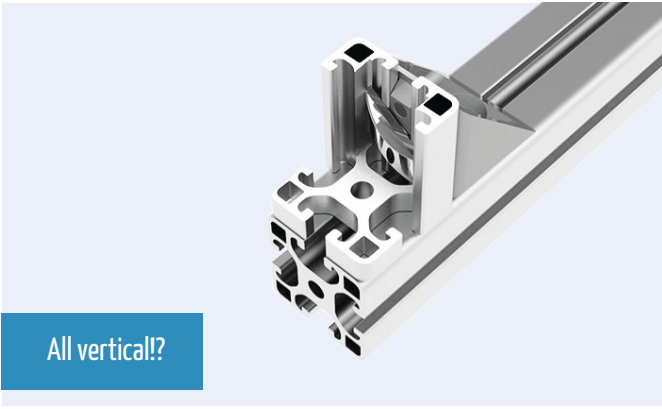
Short screw joint set



403704

- for right-angle connecting two aluminium profiles
- Use: When a panel element is installed in the groove on one side.
- To tighten the joint, a clearance hole of at least 6.5 mm must be drilled in one profile.
- Teeth break the anodised layer and create a secure, ESD electrostatically discharged connection
- Material: steel, galvanised
- incl. 1x rotation lock, M8 screw

Weight: 19,5 g



All vertical!?

Angle connections

- for right-angled or flexible connection of two aluminium profiles

Angle set 40 x 40 mm



403695

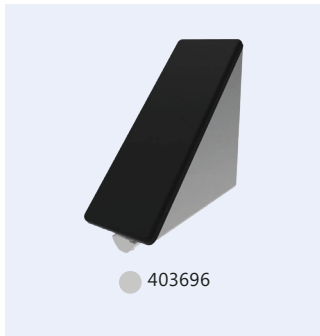
- for right-angled connection of profiles and panel elements
- direct insertion into the profile groove
- open side of the angle can be closed with a cover cap.
- Material: die-cast aluminium

Included in the set:

- 2x pan-head screws
- 2x washer
- 2x slot nut M8
- Cover cap

Weight: 98 g

Angle set 80 x 80 mm



403696

- for right-angled connection of profiles and panel elements
- open side of the angle can be closed by a cover cap
- pre-assembled
- material: zinc

Included in the set:

- 4x pan-head screws
- 4x washer
- 4x slot nut M8
- Cover cap

Weight: 399,2 g

Automatic angle 40x40 mm



403706

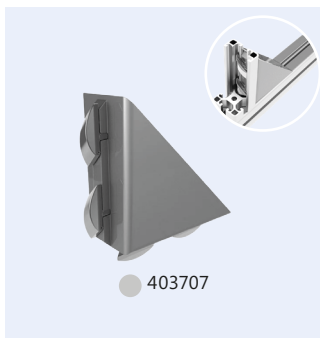
- for quick, right-angle connection of two profiles.
- direct insertion into the profile groove, thanks to correct positioning of the pre-assembled magnetic rhombus screws and countersunk nuts
- pre-assembled
- Material: die-cast aluminium

Included in the set:

- 2x Rhombus screws M8x11
- 2x Countersunk nut M8

Weight: 98 g

Automatic angle 80 x 80 mm



403707

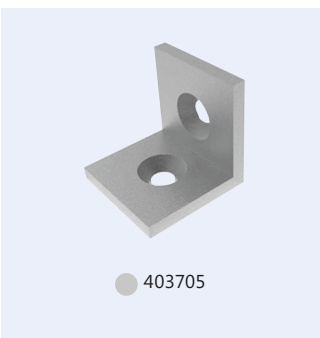
- for quick, right-angle connection of two profiles.
- direct insertion into the profile groove, thanks to correct positioning of the pre-assembled magnetic rhombus screws and countersunk nuts
- pre-assembled
- Material: die-cast aluminium

Included in the set:

- 4x Rhombus screws M8x11
- 4x Countersunk nut M8

Weight: 197 g

Angle 40 x 40 mm



403705

- Angle bracket for right-angled connection of two aluminium profiles
- Material: steel

additional fixing material required

- 2x SSI0816 8.8 (HA202275)
- 2x Slot nut M8 (403666)

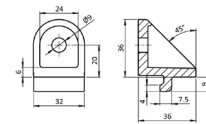
Weight: 108,6 g

Clamping angle



403698

- fast and flexible connection of two aluminium profiles
- Hole for M8 screw
- Material: zinc die-cast



additional fixing material required

- 2x SI0816 8.8 (111553)
- 2x US08 (101846)

Weight: 44 g

Q-490 Aluminium corner joint 90°



Aluminium: 602350

- Quick joint 90
- For stabilising 40 mm and 45 mm square-edged aluminium profiles with 8 mm and 10 mm groove
- Dimensions: 60 x 60 x 18 mm

Weight: 76 g
Packaging unit: 60 pcs

QA-490 Aluminium corner joint set 90°

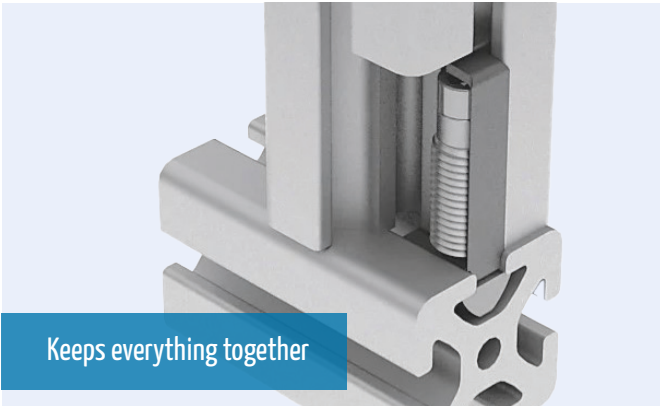


Aluminium: 602316

- Quick joint 90
- For stabilising 40 mm and 45 mm square-edged aluminium profiles with 8 mm and 10 mm groove
- Dimensions: 60 x 60 x 36 mm

The set consists of following parts:

- 2 x Q-490
- 1 x SI0825 8.8
- 1 x M08



Keeps everything together

Automatic joint

- for quick connection of two aluminium profiles without profile machining
- Self-tapping thread
- Recommended use: in pairs

Automatic joint set



- Fast and stable connection of two aluminium profiles without profile machining
- further accessories: Cover cap 403700
- Self-tapping thread
- Material: steel

Included in the set:

- Cutting sleeve
- Screw M6x40
- Slot nut M6

- 403699
- 403727

Weight: 33 g

Automatic joint connector set



- Fast, end-to-end connection of two aluminium profiles without profile machining.
- Self-tapping thread
- Material: steel
- Including assembly set with screw and cutting sleeve

- 403701

Weight: 43 g



All vertical!?

Joint bars

- for quick, right-angled or parallel connection and extension of two profiles

Connecting plate 40 x 80 mm



- for connecting two aluminium profiles 40 x 40 mm
- 4,5 mm thick
- hole spacing 40 mm
- for countersunk screw M8
- Material: steel

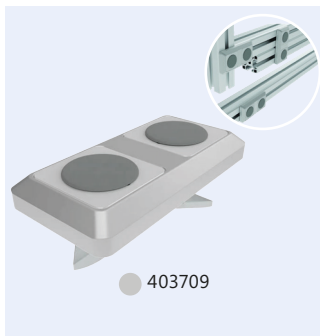
additional fixing material required

- 2x SSI0816 8.8 (HA202275)
- 2x Slot nut M8 (403666)

- 403703

Weight: 91 g

Automatic joint bar 80 x 40 mm

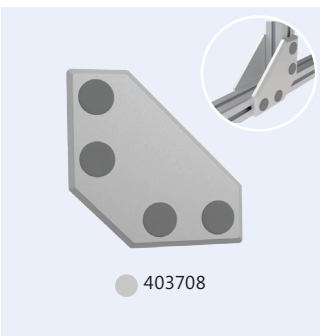


- for quick, right-angled or parallel connection and extension of two profiles 40x40 mm groove 8.
 - direct insertion into the profile groove, thanks to correct positioning of the pre-assembled magnetic rhombus screws and countersunk nuts
 - pre-assembled
 - Material: Aluminium
- Included in the set:
- 1x connector plate
 - 2x cover cap

- 403709

Weight: 111,1 g

Automatic joint bar 120 x 120 mm



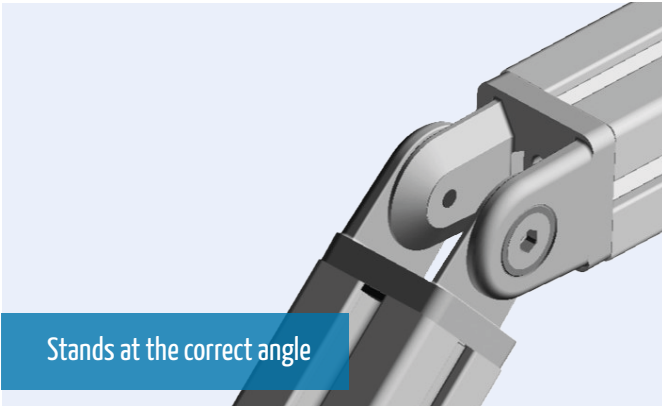
- for quick, right-angle connection of two profiles 40x40 mm groove 8.
- direct insertion into the profile groove, thanks to correct positioning of the pre-assembled magnetic rhombus screws and countersunk nuts
- pre-assembled
- Material: Aluminium

Included in the set:

- 1 x Connector plate
- 4 x Cover cap

- 403708

Weight: 331,6 g



Stands at the correct angle

Movable joint

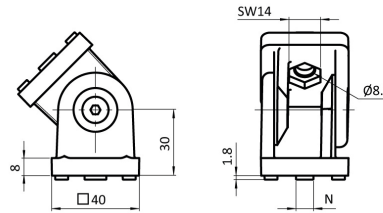
- for movable connection of two aluminium profiles or panel elements
- separate groove fixation
- Frictional resistance can be regulated or fixed in a defined position

Joint



● 403694

- with adjustable friction, for movable connection of two profiles or panel elements
- separate groove fixings for groove 8 and groove 10
- by means of screws, the frictional resistance of the joint can be infinitely adjusted, or the joint can be fixed in a defined position
- Material: zinc die-cast



Weight: 305 g

additional fixing material required
 • 2x S10816 (111553)
 • 2x Slot nut M8 (403666)

Angle lock set 80 x 40 mm

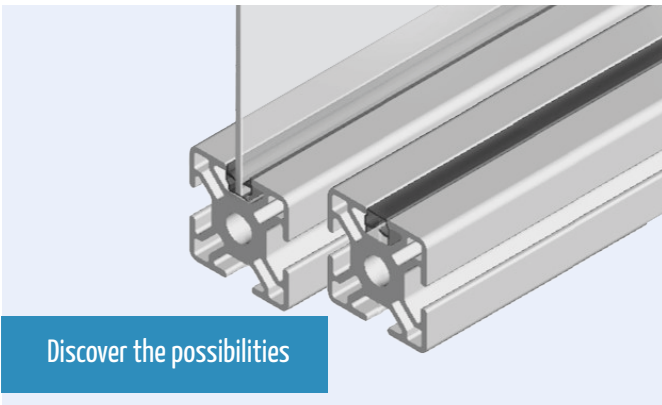


● 403702

- angle-adjustable connection of two aluminium profiles
- can be fixed in 2.5° steps by means of knurled screw.
- Material: die-cast aluminium

- Included in the set:
- 1x angle adjustment incl. knurled screw
 - 2x compression springs
 - 2x half-round screws
 - 2x cylinder screws
 - 2x Washers
 - 4x Slot nut M8

Weight: 275 g

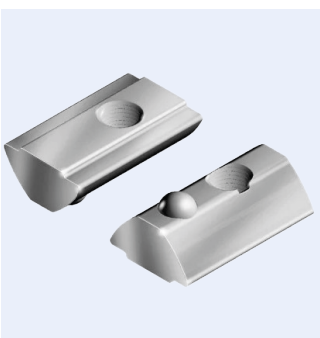


Discover the possibilities

Attachment parts

- T-Slot Nuts
- cover caps
- protective profiles
- sealing profiles
- various parts for fastening
- Hinges

Groove stone



- swivelling in
- with guide bar and spring ball
- for aluminium profile
- Material: steel, galvanised

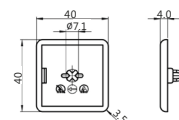
| Art.-No. | Thread | Weight |
|----------|--------|--------|
| 403663 | M4 | 11 g |
| 403664 | M5 | 11 g |
| 403665 | M6 | 10 g |
| 403666 | M8 | 9 g |
| 403728 | M6 | 10 g |
| 403729 | M8 | 9 g |

Cover cap 40 x 40 mm



● 403648
 ● 403649

- Covering the profile ends
- compatible with aluminium profile 40 x 40 mm groove 8
- Material: plastic

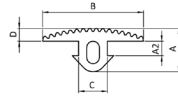


Weight: 6,7 g

Cover profile



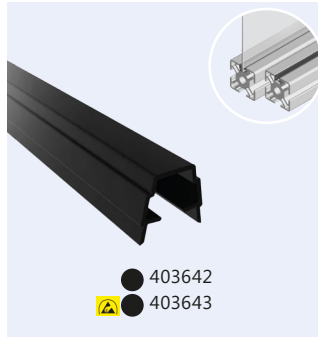
- For covering grooves with 8 mm width.
- Material: Plastic NBR



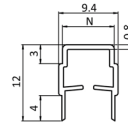
● 403644

Weight: 210 g/m

Cover and edging profile



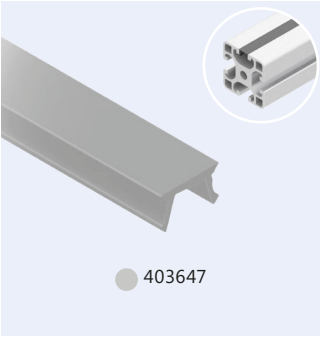
- For covering grooves with 8 mm width.
- Edging of surface elements, 4-6 mm
- Material: plastic



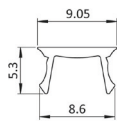
● 403642
● 403643

Weight: 26 g/m
Length:: 2 m

Cover profile



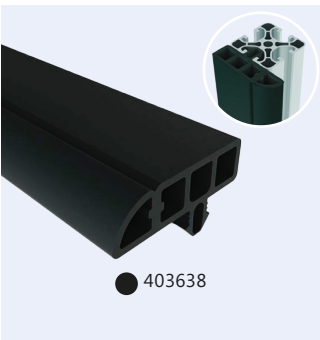
- For covering grooves with 8 mm width and web height 4.5 mm
- Material: PP plastic



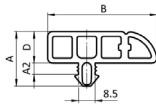
● 403647

Weight: 16 g/m
Length:: 2 m

Corner protection profile



- With curve radius 16 mm
- Protection against damage and injuries, also on the outer edge
- Impact protection due to hollow chamber profile
- Material: Plastic TPE



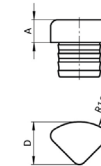
● 403638

Weight: 435 g/m
Length: 2000 mm

Cover cap corner protection profile



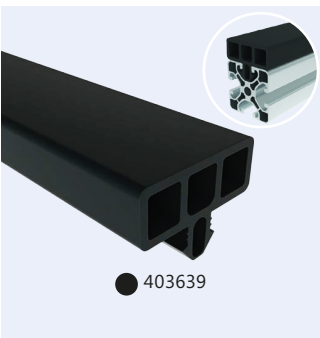
- For covering the ends of the corner protection profile.
- 90° angle, radius 16 mm
- Material: Plastic TPE



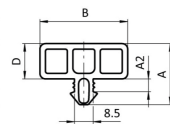
● 403641

Weight: 2 g

Side protection profile



- Protection against damage and injuries, also on the outer edge
- Impact protection due to hollow chamber profile
- Material: plastic TPE



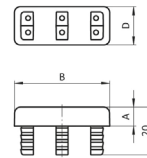
● 403639

Weight: 334 g/m
Length: 2000 mm

Cover cap side & corner protection profile



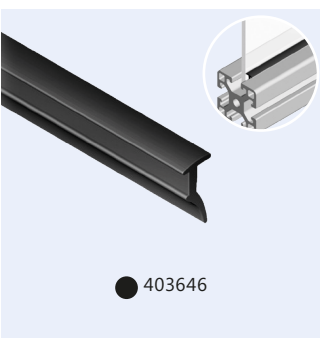
- To cover the ends of the side & corner protection profile.
- Material: Plastic TPE



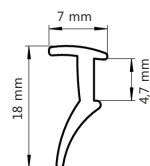
● 403640

Weight: 6 g

Disc sealing for discs from 4 - 6 mm



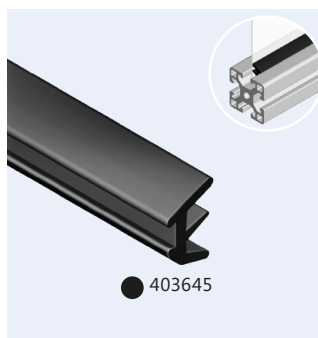
- for fixing and sealing panel elements in the groove
- Material: plastic TPE



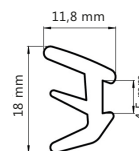
● 403646

Weight: 16 g/m
Length:: 100 m roll

Disc sealing for discs from 2 - 4 mm



- for fixing and sealing panel elements in the groove
- Material: plastic TPE



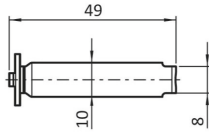
● 403645

Weight: 52 g/m
Length:: 100 m roll

Cover cap for automatic joint

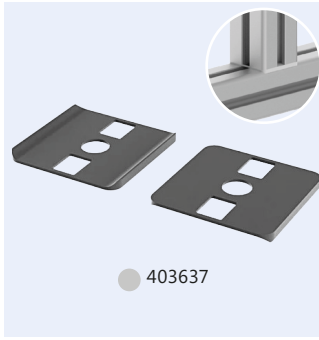


- to cover automatic joint 403699 with sleeve Length: 31 mm in profile groove 8
- Material: plastic PA

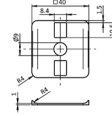


Weight: 1 g

Radius seal 40 x 40



- Producing a transition for right-angled profile connections
- Suitable for clean room applications
- Application: Screw connections and automatic joints 403699
- Radius on both sides
- Material: plastic

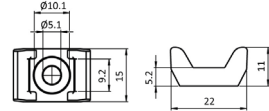


Weight: 2 g

Universal cable tie block



- e.g. for fastening cables to a profile.
- Mounting by means of hammer-head nut or similar.
- Material: PA plastic



additional fixing material required

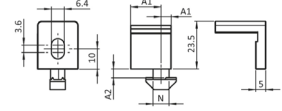
- 1x SIN0510 (112089)
- Cheese head screw M5x10
- 1x slot nut M5 (403664)

Weight: 3 g

Mounting block



- for easy fastening of panel elements
- Material: PA plastic
- incl. spacer and nut M6



additional fixing material required

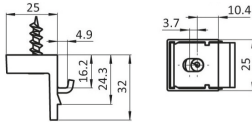
- 1x SLI0625 (111134)
- Lens flange screw M6x25

Weight: 13 g

Panel clamping angle set



- robust fastening element for work-tops on profile frame construction
- fixing clamping in the profile groove is done by tightening the self-drilling screw
- Material: steel/plastic PA

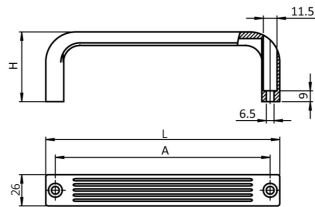


Weight: 26 g

Bow handle



- for mounting on doors, flaps and aluminium profiles
- for M6 screw
- colour: black
- Material: PA plastic



| Art.-No. | Height (H) | Drill hole spacing (A) | Length: (L) | Weight |
|----------|------------|------------------------|-------------|--------|
| 403658 | 58 mm | 179 mm | 195 mm | 74 g |
| 403659 | 50 mm | 118 mm | 133 mm | 53 g |

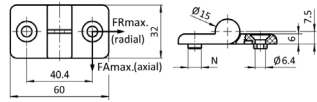
additional fixing material required

- 2x S10620 (125096)
- Cheese head screw M6x20
- 2x slot nut M6 (403665)

Plastic hinge on the left



- for aluminium profiles with groove 8
- detachable
- Material: PA plastic



additional fixing material required

- 2x SSI0616 8.8 (111189)
- 2x slot nut M6 (403665)

Weight: 21 g

Plastic hinge on the right



- for aluminium profiles with groove 8
- detachable
- Material: PA plastic

Note: If the swivel element must not be unhooked, a left as well as a right element must be installed.

additional fixing material required

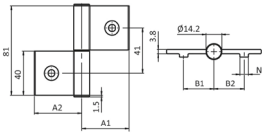
- 2x SSI0616 8.8 (111189)
- 2x slot nut M6 (403665)

Weight: 21 g

Aluminium hinge

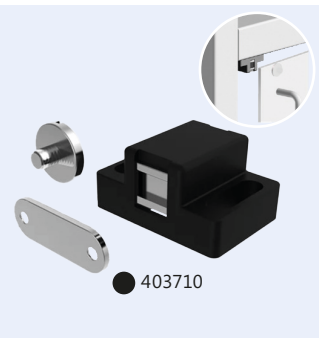


- for panel elements and aluminium profiles with groove 8
- detachable
- can be assembled on the left or right
- incl. mounting set



Weight: 106 g

Magnetic catch



- Quick release fastener for doors
- adaptable to the thickness of the panel

Fastening:

- Magnetic catch: M6
- Retaining plate: hexagon M4

Included in the set:

- 1 magnetic catch
- 1 flat head screw
- 1 retaining plate 14 x 21 x 2 mm

additional fixing material required

- 2x SI0620 (125096)
- 2x slot nut M6 (403665)

Weight: 46 g

Ball catch



- Quick release fastener for doors
- adaptable to the thickness of the panel
- Closing force approx. 50 N

additional fixing material required

- 2x SI0620 (125096)
- 2x slot nut M6 (403665)

Weight: 45 g

Ball catch magnet plate mounting bracket

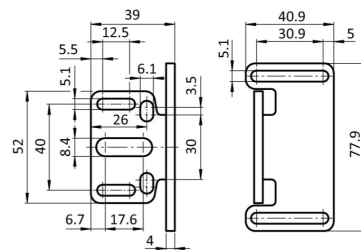


- for flexible positioning of housing or ball stud.
- separate bracket for the ball head screw of the ball stud or the flat head screw of the magnetic catch
- powder-coated

additional fixing material required

- 2x SI0516 8.8 (109790)
- 2x slot nut M5 (403664)
- 2x US05 (101847)

Weight: 111 g



Slam closure



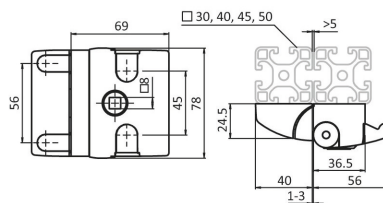
- Die-cast aluminium
- for easy and secure closing of doors and flaps
- Assembly without mechanical processing
- secured against disassembly when closed

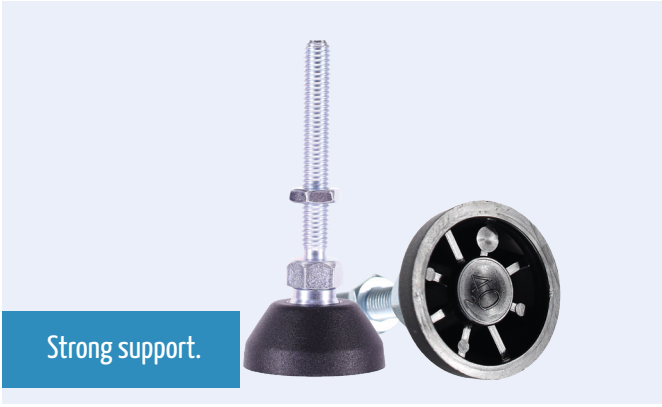
additional fixing material required

- 4x SI0616 8.8 (110257)
- 4x slot nut M6 (403665)

Weight: 236 g

| Art.-No. | Lock |
|----------|---|
| 403713 | keyed alike, identical key for all locks |
| 403714 | different locking, individual key for each lock |





Strong support.

Adjustable foot

- Serve to compensate for uneven floors
- Prevent slipping
- Colour black

Swivel feet



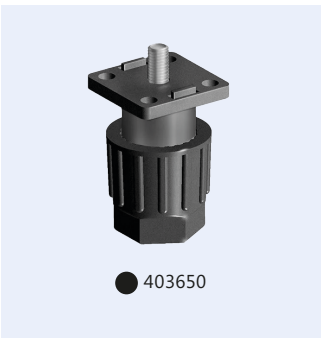
- incl. lock nut
- colour black

| Art.-No. | Ø Foot | Material swivel foot | Load capacity | Length: | Thread | Weight |
|----------|--------|----------------------|---------------|---------|--------|--------|
| 403653 | 40 mm | zinc die-cast | 400 kg | 60 mm | M8 | 113 g |
| 403654 | | | | 40 mm | | 107 g |
| 403656 | | plastic | 300 kg | 60 mm | | 57 g |
| 403657 | 40 mm | | | 50 g | | |

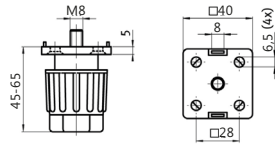
incl. anti-slip plate

| Art.-No. | Ø Foot | Material swivel foot | Load capacity | Length: | Thread | Weight |
|----------|--------|----------------------|---------------|---------|--------|--------|
| 403655 | 40 mm | plastic | 300 kg | 50 mm | M8 | 59 |

Adjustable foot as a stroke screwdriver



- Compact
- Load capacity 150 kg
- Can be levelled without tools



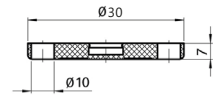
● 403650

Weight: 78 g

Anti-slip plate



- Anti-slip plate for joint feet
- Ball 15
- prevents slipping and can dampen vibrations
- Material: thermoplastic elastomer



● 403651
▲ ● 403652

Weight: 4 g



The right castors for every task

Castors

- are used for the mobility of units, whereby installation locations can be changed flexibly
- are available for different load capacities and can be selected depending on the application
- Powder-coated housing in aluminium colour

Fixed Castor with mounting plate

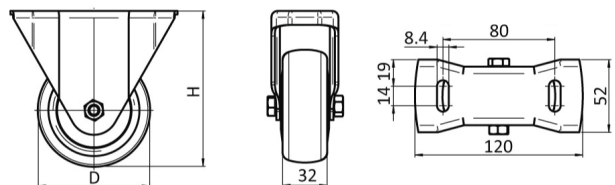


- resilient and smooth-running fixed castor
- non-marking
- ball bearing with thread guard
- Integrated screw-on plate for asymmetrical mounting
- Can be combined with all swivel and fixed castors due to same height level
- Material, housing: steel
- Material, wheel centre: PP, grey

additional fixing material required

- 2x SI0816 (111553)
- 2x USG08 (109760)
- 2x Slot nut M8 (403666)

| Art.-No. | Tread | Load capacity | Wheel Ø (D) | Overall height (H) | Weight |
|----------|-----------|---------------|-------------|--------------------|--------|
| 403688 | | 100 kg | 80 mm | 111 mm | 484 g |
| 403689 | TPE, grey | 110 kg | 100 mm | 136 mm | 577 g |
| 403690 | | 120 kg | 125 mm | 161 mm | 675 g |



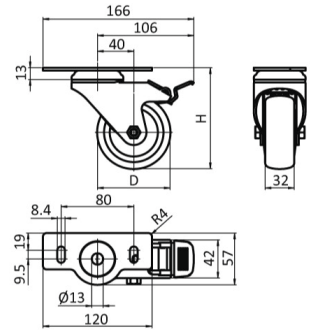
Swivel castor with double locking device and mounting plate



- resilient and smooth-running swivel castor
- non-marking
- ball bearing with thread guard and integrated mounting plate for asymmetrical attachment to aluminium profiles without protrusion
- can be combined with all swivel and fixed castors due to same height level with optional adapter plate
- Material, housing: steel
- Material, wheel centre: PP

additional fixing material required

- 2x SI0816 (111553)
- 2x USG08 (109760)
- 2x Slot nut M8 (403666)
- for ELF 2x slot nut M8 (403729)



| Art.-No. | Tread | Load capacity | Wheel Ø | Overall height | Weight | Colour (wheel body) | |
|----------|-----------|---------------|---------|----------------|--------|---------------------|---|
| 403682 | | 100 kg | 80 mm | 111 mm | 710 g | | x |
| 403683 | | 110 kg | 100 mm | 136 mm | 787 g | grey | x |
| 403684 | TPE, grey | 120 kg | 125 mm | 161 mm | 873 g | | x |
| 403685 | | 65 kg | 80 mm | 111 mm | 740 g | | ✓ |
| 403686 | | 70 kg | 100 mm | 136 mm | 836 g | black | ✓ |
| 403687 | | 80 kg | 125 mm | 161 mm | 937 g | | ✓ |

Note: The ELF castors are always supplied with serrated lock washers. For safe conductivity, at least one screw must be installed with the serrated lock washer so that the lacquer of the castor housing is penetrated

Fixed castor Adapter plate F



- For front profile bolting of fixed castors D80/100/125 to aluminium profiles.
- Zinc die-cast



Weight: 34 g

Fixed castor with back hole

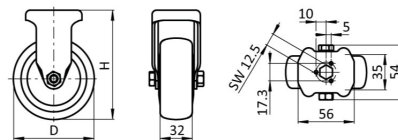


- resilient and smooth-running fixed castor
- non-marking
- Ball bearing with thread guard for mounting on aluminium profiles using the adapter plate for fixed castors (403667)
- can be combined with all swivel and fixed castors due to same height level
- Material, housing: steel
- Material, wheel centre: PP, grey

additional fixing material required

- 1x SI0835 8.8 (111443)
- 1x USG08 (109760)
- 1x Adapter plate F (403667)

| Art.-No. | Tread | Load capacity | Wheel Ø (D) | Overall height (H) | Weight |
|----------|-----------|---------------|-------------|--------------------|--------|
| 403668 | | 100 kg | 80 mm | 108 mm | 323 g |
| 403669 | TPE, grey | 110 kg | 100 mm | 133 mm | 390 g |
| 403670 | | 120 kg | 125 mm | 158 mm | 472 g |



Note: The fixed castor should always be installed with the torsion-resistant adapter plate F.

Swivel castor Adapter plate S



- For front profile bolting of swivel castors D80/100/125 to aluminium profiles.
- Zinc die casting



Weight: 43 g

Swivel castor with back hole

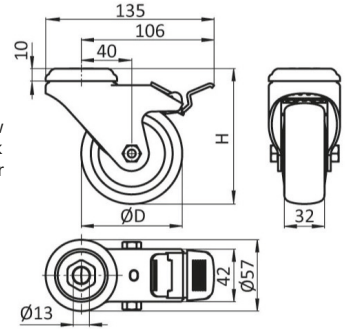


- resilient and smooth-running swivel castor
 - non-marking
 - Ball bearing with thread guard for front side mounting, with one M8 screw, on aluminium profiles
 - can be combined with all swivel and fixed castors due to same height level, with optional adapter plate S
 - Tread TPE, grey
- Material, housing: steel
 - Material, wheel centre: PP

Note ELF: The ELF castors are always supplied with serrated lock washers. For safe conductivity, at least one screw must be installed with the serrated lock washer so that the lacquer of the castor housing is penetrated.

additional fixing material required

- 1x SI0835 8.8 (111443)
- 1x USG08 (109760)
- optional 1x adapter plate S (403726)

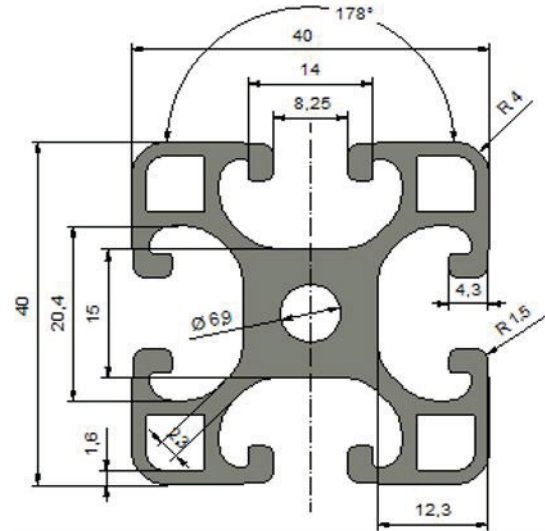


| Art.-No. | Bearing | Double locking device | Load capacity | Wheel Ø | Overall height | Weight | Colour (wheel body) | |
|----------|---------------|-----------------------|---------------|---------|----------------|--------|---------------------|---|
| 403673 | plain bearing | ✓ | 100 kg | 80 mm | 108 mm | 597 g | grey | x |
| 403674 | plain bearing | x | 100 kg | 80 mm | 108 mm | 562 g | grey | x |
| 403675 | ball bearing | ✓ | 110 kg | 100 mm | 133 mm | 674 g | grey | x |
| 403676 | ball bearing | x | 110 kg | 100 mm | 133 mm | 562 g | grey | x |
| 403677 | ball bearing | ✓ | 120 kg | 125 mm | 158 mm | 760 g | grey | x |
| 403678 | ball bearing | x | 120 kg | 125 mm | 158 mm | 745 g | grey | x |
| 403679 | ball bearing | ✓ | 65 kg | 80 mm | 108 mm | 627 g | black | ✓ |
| 403680 | ball bearing | ✓ | 70 kg | 100 mm | 133 mm | 723 g | black | ✓ |
| 403681 | ball bearing | ✓ | 80 kg | 125 mm | 158 mm | 824 g | black | ✓ |

Technical data

Data sheet P4040A-I

| | |
|---|---------------------|
| Material: | A6063-T5 |
| Dimension (mm): | 40 x 40 |
| Lenght (mm): | 4000 |
| Surface: | natural anodised |
| Groove width (mm): | 8,25 |
| Core hole drilling (mm): | 6,9 |
| Weight (kg/m): | 1,61 |
| Profile area A (cm ²): | 5,95 |
| Area moment of inertia torsion I _t (cm ⁴): | 1,19 |
| Area moment of inertia I _x /I _y (cm ⁴): | 8,37 |
| Moment of resistance W _x /W _y (cm ³): | 4,18 |
| ESD surface: | > 10 ⁹ Ω |
| ESD material: | < 10 ³ Ω |



Loads Aluminium square profile 40x40 groove 8

As the aluminium profile has many attachment options with different joint and retaining forces, there is only a load-bearing capacity overview of the free-standing aluminium profile.

| | | | | | | |
|---|---------|---------|---------|---------|---------|----|
| | | | | | | |
| Traglast (kg) bei frei aufliegenden Profil als Streckenlast Load capacity (kg) with free-lying profile as line load | | | | | | |
| Length: Mittenmaß (M) Length: centre measure (M) | 1000 mm | 1500 mm | 2000 mm | 2500 mm | 3000 mm | |
| Durchbiegung (mm) Deflection (mm) | 5 | 7,5 | 10 | 12,5 | 15 | |
| P4040A-I | | 215 | 95 | 54 | 33 | 24 |
| Die empfohlene Durchbiegung richtet sich an der DGUV Regel 108_007 (BGR 234), in der eine max. Durchbiegung von 1/200 der Spannweite vorgeschrieben wird. The recommended deflection is based on DGUV Rule 108_007 (BGR 234), which specifies a maximum deflection of 1/200 of the span. | | | | | | |

| | | | | | | |
|---|---------|---------|---------|---------|---------|----|
| | | | | | | |
| Traglast (kg) bei frei aufliegenden Profil als Einzellast Load capacity (kg) with free-lying profile as single load | | | | | | |
| Length: Mittenmaß (M) Length: centre measure (M) | 1000 mm | 1500 mm | 2000 mm | 2500 mm | 3000 mm | |
| Durchbiegung (mm) Deflection (mm) | 5 | 7,5 | 10 | 12,5 | 15 | |
| P4040A-I | | 142 | 62 | 35 | 21 | 14 |
| Die empfohlene Durchbiegung richtet sich an der DGUV Regel 108_007 (BGR 234), in der eine max. Durchbiegung von 1/200 der Spannweite vorgeschrieben wird. The recommended deflection is based on DGUV Rule 108_007 (BGR 234), which specifies a maximum deflection of 1/200 of the span. | | | | | | |

Specified tightening torques for the following components

| Art. No. | Name | Specified tightening torques for fixing screws |
|-------------------|--|--|
| | All plastic handlebars | 7 Nm |
| | All bolt-hole castors, 80-125 (swivel and fixed castors) | 20 Nm (with M8 screws) |
| | All plate castors, 80-125 (swivel and fixed castors) | 20 Nm (with M8 screws) |
| 403691/ 403692 | Plastic hinge left/right | 7 Nm |
| 403693 | Aluminium hinge 40x40 Nut 8 Set | 14 Nm |
| 403694 | Joint 40x40 groove 8 set, zinc | 14 Nm |
| 403695 | Angle 40x40 groove 8 set, zinc | 14 Nm |
| 403696 | Angle 80x80 groove 8 set, zinc | 14 Nm |
| 403697 | Screw joint set for 40x40 groove 8 | 14 Nm |
| 403699 | Automatic joint set, 40x40 groove 8 | 14 Nm |
| 403701 | Automatic joint connector set, 40x40 groove 8 | 14 Nm |
| 403702 | Angle adjustment set, 40x40 groove 8 | 14 Nm |
| 403703 | Connecting plate 40x80 mm | 14 Nm |
| 403705 | Angle 40x40 Groove 8 | 14 Nm |
| 403706 | Automatic angle 40x40 mm set | 14 Nm |
| 403707 | Automatic angle 80x80 mm set | 14 Nm |
| 403708 | Automatic joint bars 120x120 mm set | 14 Nm |
| 403709 | Automatic joint bars 80x40 mm set | 14 Nm |
| 403713/ 403714 | Slam lock, aluminium, black | 10 Nm |

Electrical conductivity (ELF)

ELF is the abbreviation for „electrically conductive“ and limits the electrical leakage resistance range of a body.

With ELF design, all essential parts of a construction, including the castors, must be electrically conductive. Basically, our ELF components/structures have an electrical resistance of $< 10^9 \Omega$. The customer must check whether the components/structures meet his electrostatic discharge requirements.

If it is not possible for all components to have a desired resistance value and/or the floor is not conductive, the construction or only the ELF tabletop can also be discharged via an earthing plug and a suitable socket.

Notice:

When using the 40x40mm aluminium square profiles with anodised coating, please note the following:

The aluminium square bar material has a surface resistance of $< 10^9 \Omega$ due to the anodised coating. If the connecting elements are mounted correctly, a resistance value of $< 10^6 \Omega$ from connecting element to connecting element can be achieved.

There are special ELF articles for some add-on parts. These are already conductive throughout. For some add-on parts, such as the ELF wheels, the toothed lock washers supplied must be installed so that the coating of the components is safely penetrated. Grooved stones with ELF function are fitted as standard to the conductive set items.

In the case of components declared as non-conductive, sufficient conductivity can be achieved by removing paint or using special toothed lock washers on most metallic (steel, aluminium, zinc die-cast) articles. This should always be done in conjunction with ELF sliding blocks.

The basis for the design of a system is to apply the standard according to DIN EN 61340-5-1

Publisher and production:

BeeWaTec AG, Kunstmühlestraße 16, DE-72793 Pfullingen
Tel. 0049-7121-62 87 16-0, E-Mail: info@beewatec.de
Release: 03/2024 | Version: 1.03 | Art.-No. 601413

General information:

We reserve the right to make technical changes, further developments, product changes and modifications, even without prior notice. We accept no liability for printing, spelling and translation errors. In any case, the German version has priority. All information in the catalogue is non-binding and subject to change.



BeeWaTec AG

Kunstmühlestraße 16
DE-72793 Pfullingen

Phone +49 (0) 7121-62 87 16-0
Fax +49 (0) 7121-62 87 16-499

info@beewatec.de

Austria

BeeWaTec GmbH

Leopold-Böhm-Straße 10/D53
AT-1030 Wien

Phone +43 (1) 890 00 58
Fax +43 (1) 890 01 94

info@beewatec.at

Switzerland

BeeWaTec AG

Wilerstrasse 68
CH-6062 Wilen (Sarnen)

Phone +41 (0) 62 891 00 00

info@beewatec.ch

Czech Republic / Slovakia

BeeWaTec s.r.o.

Dřevařská 13
CZ-68001 Boskovice

Phone +42 (0) 515-554 400
Fax +42 (0) 515-554 410

info@beewatec.cz

Poland

BeeWaTec Sp. z o.o.

ul. Strefowa 25
PL-58-200 Dzierżoniów

Phone +48 (0) 74-661 8564

sales@beewatec.pl

Hungary

BeeWaTec Hungária Bt.

Kiskörösi út 8
HU-6000 Kecskemét

Phone +36 (20) 343-8736
Fax +36 (0) 76-507-001

info@beewatec.hu

Romania

BeeWaTec EastTrade S.R.L

Strada Linistei Nr. 2
RO-400398 Municipiul Cluj-Napoca

Phone +40 (0) 364-157-798

info@beewatec.ro

Baltics

BeeWaTec Baltics UAB

Chemijos g. 15
LT-51332 Kaunas, Litauen

Phone +370 69-51 17 74

info@beewatec.lt

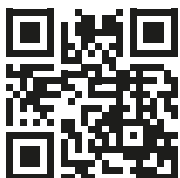
Serbia

BeeWaTec d.o.o.

Makedonska 30 (Eurocentar),
3rd floor
RS-11000 Belgrade

Phone +40 (0) 364-157-798

info@beewatec.rs



All important addresses at a glance!

BeeWaTec Website
www.beewatec.com