

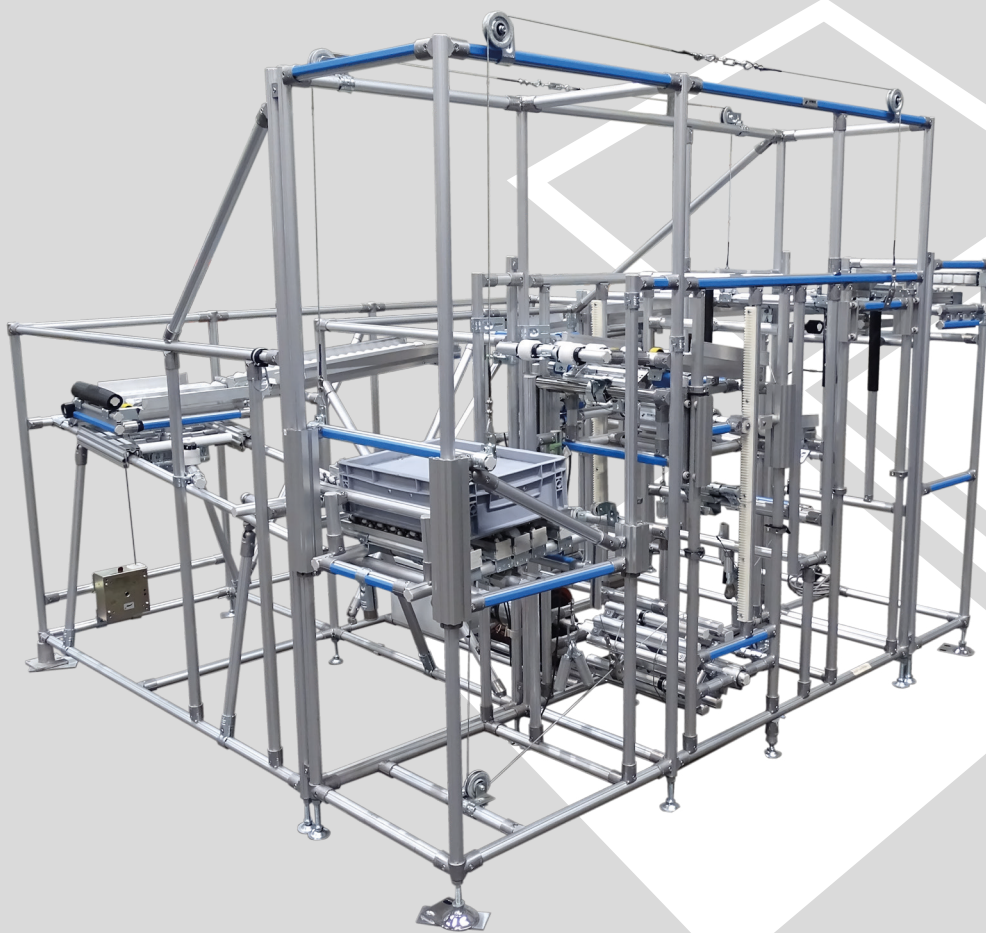


# BEEWATEC

Processes connected with flexibility

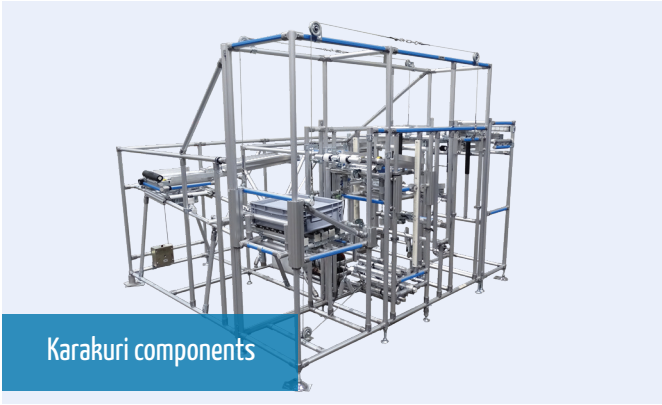
## Karakuri Automation

Always in the flow!



**LEAN PRODUCTION**  
with BeeWaTec





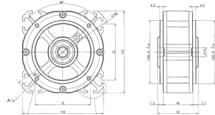
Karakuri components

## Karakuri

Karakuri is a type of mechanical automation that was originally invented in Japan in the 17th to the 19th century. Initially, most applications were developed for amusement purposes, such as serving tea or playing puppet shows.

For years, Karakuri has been a central part of the Lean Philosophy and describes the simple but clever automation of processes based on physical principles - without complex drives, sensors, electrics or pneumatics.

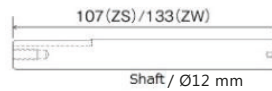
### ZS... Engine with 1 spring



Art. No.	Name	Torque	Max. revolution
131138	ZS-08	0.8 Nm	15
126969	ZS-16	1.6 Nm	12
126970	ZS-24	2.4 Nm	10

Weight: 1,3 kg

### Drive shaft for ZS models

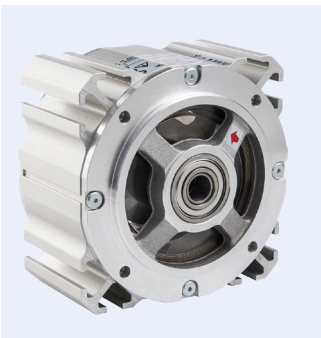


+ Set collar (126968)



Art. No.	Name
126964	Drive shaft for ZS models, single
126965	Drive shaft for ZS models, double

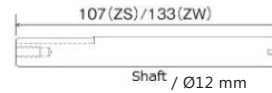
### ZW... Engine with 2 springs



Art. No.	Name	Torque	Max. revolution
126972	ZW-32	3,2 Nm	12
126974	ZW-48	4,8 Nm	10

Weight: 2,3 kg

### Drive shaft for ZW models



+ Set collar (126968)



Art. No.	Name
126966	Drive shaft for ZW models, single
126967	Drive shaft for ZW models, double

### Set collar



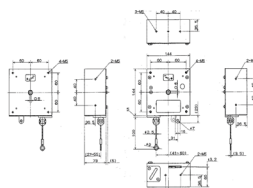
- Set collar incl. grub screws, suitable for drive shaft ZS (single/double) and ZW (single/double)

WZ: 126968

### BS-W Square Balancer, wire rope with with eyelet



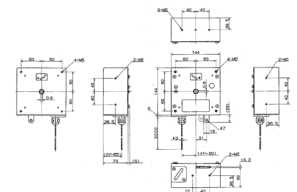
Hub: 1,3 m  
Form: square  
Dimensions: 144x144x73mm



### BS-N Square Balancer, nylon rope

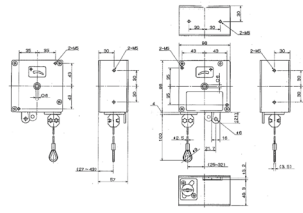


Hub: 1,3 m  
Form: square  
Dimensions: 144x144x73mm



Art. No.	Name	Capacity
131155	BS-3N	1,5-3,0 kg
126977	BS-5N	3,0-5,0 kg
126960	BS-7N	5,0-7,0 kg

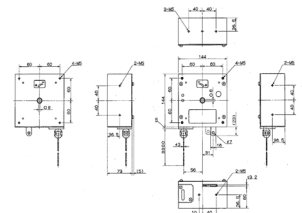
**RS-W** Square Balancer, wire rope with with eyelet



Art. No.	Name	Capacity
131160	RS-3W	29N (3,0kgf)
131161	RS-5W	49N (5,0kgf)

Hub: 3,0 m  
Form: square  
Dimensions: 144x144x73mm

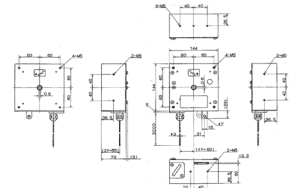
**RS-N** Square Balancer, nylon rope



Art. No.	Name	Capacity
126962	RS-3N	1,5-3,0kg
126963	RS-5N	3,0-5,0kg

Hub: 3,0 m  
Form: square  
Dimensions: 144x144x73mm

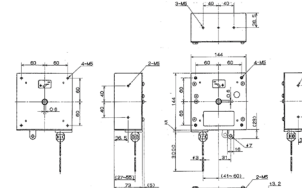
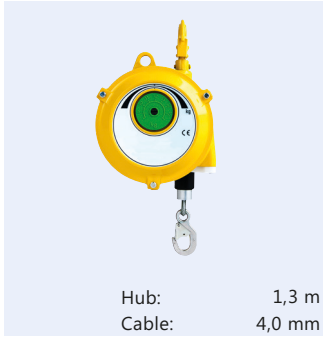
**EWS** Balancer for flexible shoring, standard



Art. No.	Name	Capacity
131165	EWS-3	1,5-3,0 kg
131166	EWS-5	3,0-5,0 kg
131167	EWS-7	5,0-7,0 kg

Hub: 1,3 m  
Cable: 3,0 mm

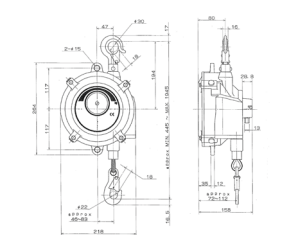
**EFW** Balancer for flexible shoring, standard



Art. No.	Name	Capacity
131168	EFW-9	4,5-9,0 kg
131169	EFW-15	9,0-15,0 kg

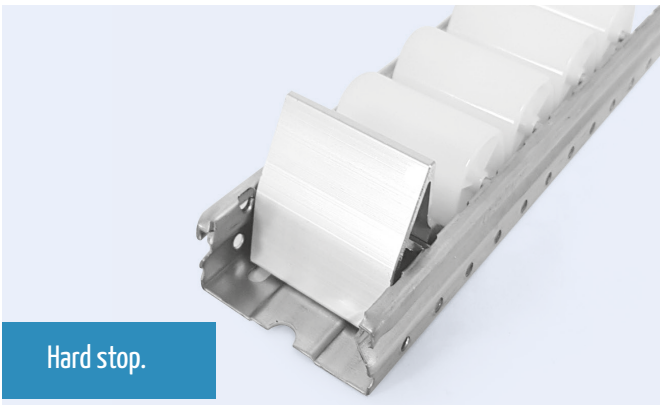
Hub: 1,3 m  
Cable: 4,0 mm

**EFW-22** Balancer for flexible shoring, standard



WZ: 131170

Hub: 1,5 m  
Cable: 4,8 mm  
Capacity: 15,0 - 22,0 kg



Hard stop.

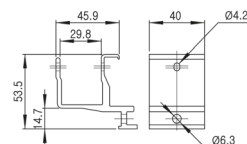
Accessories for roller tracks

- Castor pipes, castor track stops or braking castors make it easier to hand over the container and prevent containers from falling down in a horizontal installation position of the castor track or during acceleration and braking processes

**ACY-303A** Holder for braking roll



- Left, right or double-sided mounting



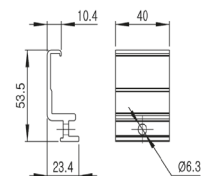
Aluminium: 401487

Weight: 55 g  
Packaging unit: 80 pcs

**ACY-303B** Holder for braking roll right



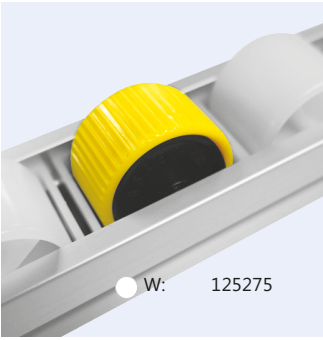
- One-sided mounting



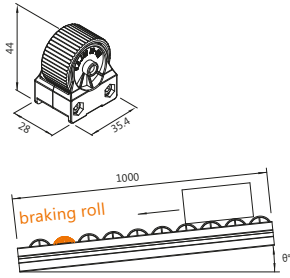
Aluminium: 401488

Weight: 29 g  
Packaging unit: 80 pcs

**DR-40** Braking roll for roller track (GP40)



W: 125275

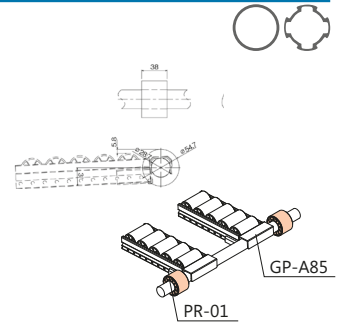


Weight: 35 g  
Packaging unit: 120 pcs

**PR-01** Pipe castor



W: 115262

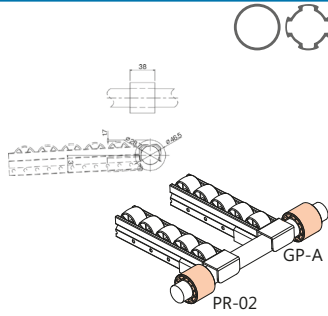


Diameter: 54.7x28.7mm  
Weight: 30 g  
Packaging unit: 150 pcs

**PR-02** Pipe castor

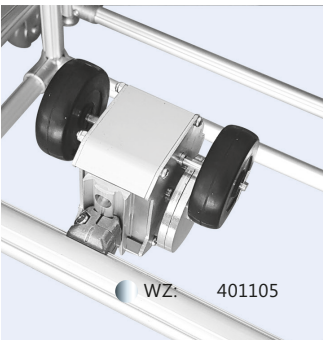


W: 115263



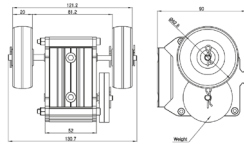
Diameter: 46.5x28.7mm  
Weight: 22 g  
Packaging unit: 210 pcs

**ACA-308B** Delay and weight for roller tracks



WZ: 401105

• incl. 2 load of weight 60g

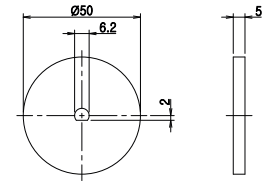


Weight: 860 g  
Packaging unit: 6 pcs

**W-50** Load of weight for delay 75 g



WZ: 401106



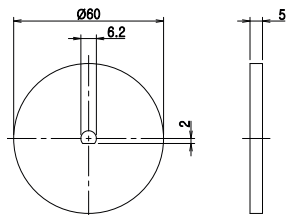
• Alternative to 60g

Weight: 75 g

**W-60** Load of weight for delay 110 g



WZ: 401107

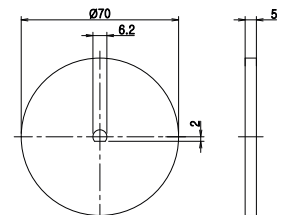


Weight: 110 g

**W-70** Load of weight for delay 148 g



WZ: 401108



• Alternative to 60g

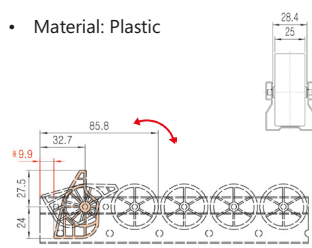
Weight: 148 g

**SR-40** Roller track stopper (axis for SR-40/ GP-40)



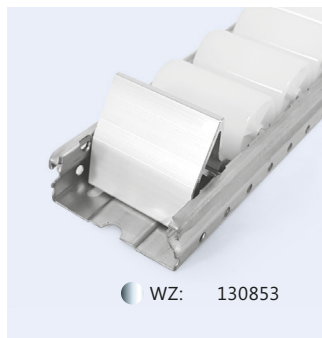
W: 114574  
ESD: 115062

• Material: Plastic

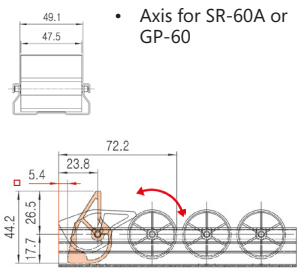


Weight: 12 g

**SR-60A WZ** Steel roller bed stopper



WZ: 130853

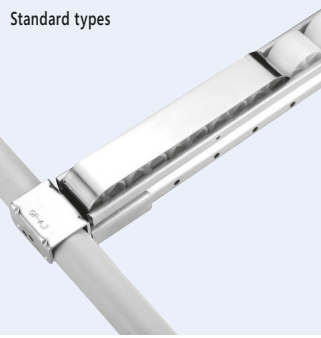


• Axis for SR-60A or GP-60

Weight: 46 g  
Packaging unit: 200 pcs

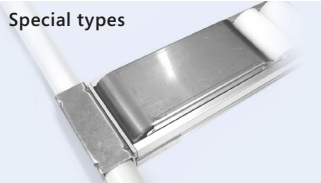


**EWS** Roller track stopper for plug-on



Art. No.	Name	For roller tracks	Weight	Packaging unit
100006	EWS-A	GP-4036A/B	56 g	240 pcs
100007	EWS-B	GP-4050C	41 g	300 pcs
100009	EWS-D	GP-4050D/UR4050	61 g	160 pcs
100010	EWS-E	GP-3533B	36 g	360 pcs
100076	EWS-F	GP-6033B/HA	85 g	170 pcs
112632	EWS-J	GP-6016S	78 g	200 pcs
120540	EWS-J2	GP-6016S (2 roller)	50 g	120 pcs
120239	EWS-K	GP-8543B/HA	140 g	90 pcs

**EWS** Roller track stopper for plug-on



Art. No.	Name	For roller tracks	Weight	Packaging unit
123465	EWS-AN	GP-4036A/B	41 g	250 pcs
120237	EWS-GN	GP-4040A/B	56 g	250 pcs
125265	EWS-GN2	GP-4040A/B (2 roller)	19 g	200 pcs
123717	EWS-MN	GP-8545B/HA	135 g	30 pcs
401224	EWSR4040	GP-R4040A/B	16 g	200 pcs
401226	EWSR6016	GP-R6016S	18 g	200 pcs
401225	EWSR6033	GP-R6033B/HA	21 g	200 pcs
401227	EWSR8523	GP-R8523S	46 g	200 pcs
401228	EWSR8545	GP-R8545B/HA	59 g	72 pcs

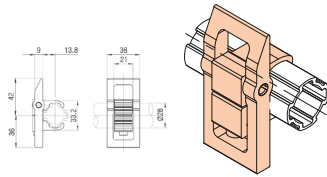


**AOS-28A** Stopper made of Aluminium



Aluminium: 130803

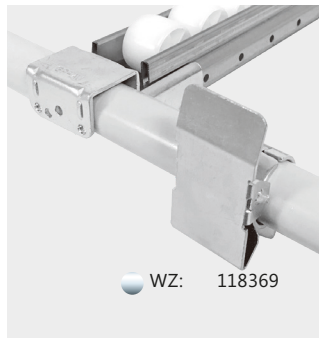
- Must by hand raised and be transferred.



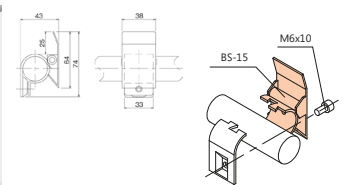
Weight: 75 g  
Packaging unit: 60 pcs



**GA-BS-15** Set of stopper clamp



WZ: 118369



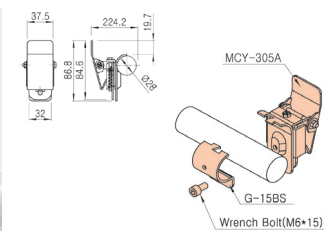
The set consists of following parts:

- 1 x BS-15
- 1 x M0610
- 1 x G-15AC

**MCA-305B** Set stopper clamp



WZ: 501028



The set consists of following parts:

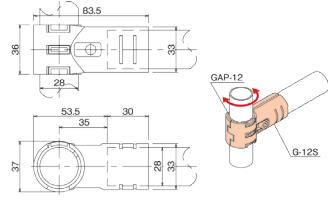
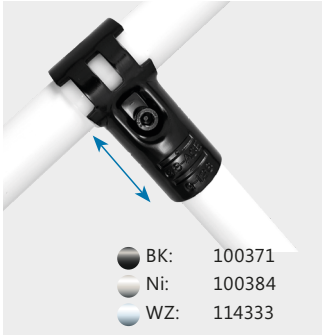
- 1 x MCA-305A
- 1 x G-15BS WZ
- 1 x M0610 WZ



## Rotary and sliding joints

- Enables rotary motion resp. longitudinal motion
- Foldable levels, lengthwise movable flaps or small-load-carrier rockers can be realized easily
- Available in WZ / Ni with black slide bush and electrically conductive (ESD)
- Available in BK with white slide bush and not electrically conductive

### GA-12S Set of rotary joints

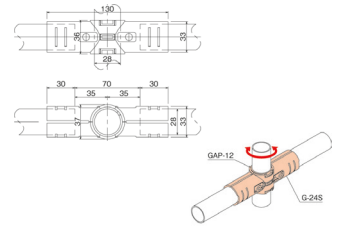
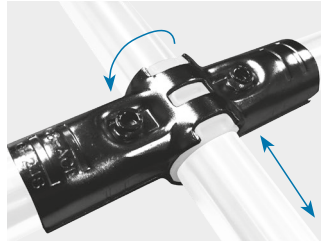


The set consists of following parts:

- 2 x G-12S
- 1 x GAP-12
- 1 x Set M0625/TN06

- BK: 100371
- Ni: 100384
- WZ: 114333

### GA-24S Set of rotary joints, two-sided

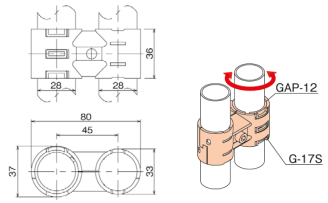
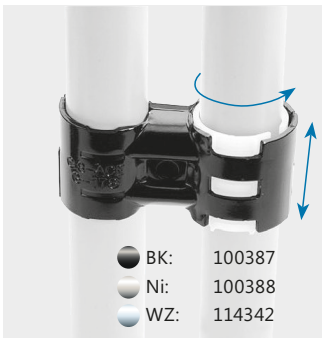


The set consists of following parts:

- 2 x G-24S
- 1 x GAP-12
- 2 x Set M0625/TN06

- BK: 109698
- Ni: 109699
- WZ: 114352

### GA-17S Set of rotary circulation joints, one-sided

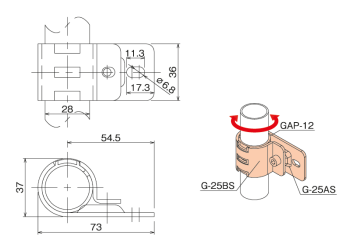


The set consists of following parts:

- 2 x G-17S
- 1 x GAP-12
- 1 x Set M0625/TN06

- BK: 100387
- Ni: 100388
- WZ: 114342

### GA-25S Set of rotary joints

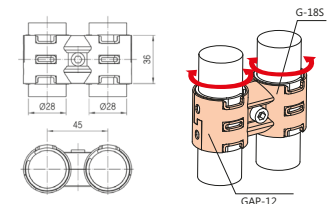


The set consists of following parts:

- 1 x G-25AS
- 1 x G-25BS
- 1 x GAP-12
- 1 x M0610

- BK: 114766
- Ni: 114767
- WZ: 115060

### GA-18S Set of rotary circulation joints, two-sided

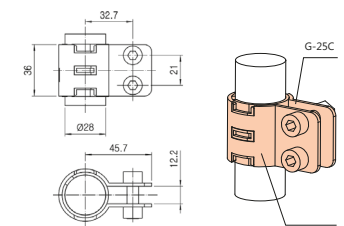
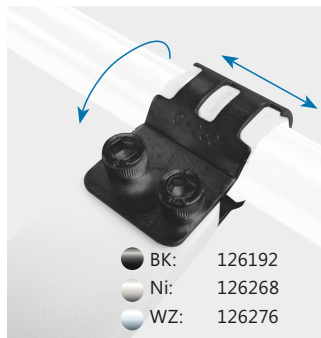


The set consists of following parts:

- 2 x G-18S
- 2 x GAP-12
- 1 x Set M0625/TN06

- BK: 100380
- Ni: 100381
- WZ: 114339

### GA-25C Set of rotary circulation joints

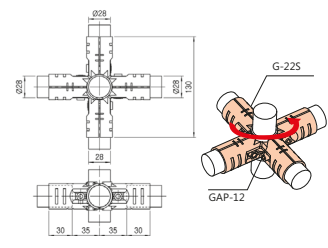
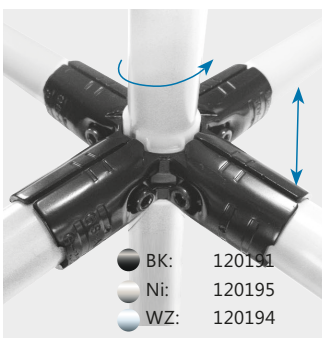


The set consists of following parts:

- 2 x G-25C
- 1 x GAP-12
- 2 x Set M0825/TN08

- BK: 126192
- Ni: 126268
- WZ: 126276

### GA-55S Set of rotary joints

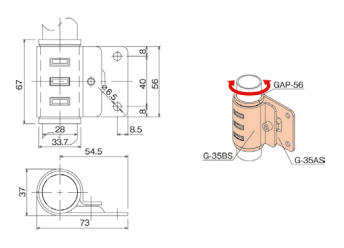
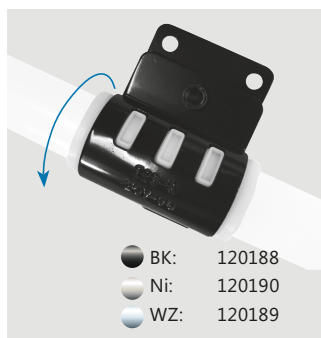


The set consists of following parts:

- 4 x G-22S
- 1 x GAP-12
- 4 x Set M0625/TN06

- BK: 120191
- Ni: 120195
- WZ: 120194

### GA-35S Set of rotary circulation joints

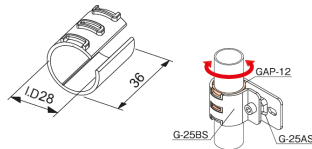


The set consists of following parts:

- 1 x G-35AS
- 1 x G-35BS
- 1 x GAP-56
- 1 x M0610

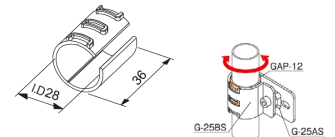
- BK: 120188
- Ni: 120190
- WZ: 120189

**GAP-12** Slide bush



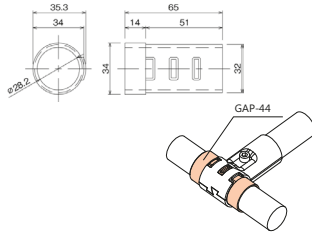
Weight: 7 g  
Packaging unit: 600 pcs

**GAP-12-E** Slide bush (electrically conductive)



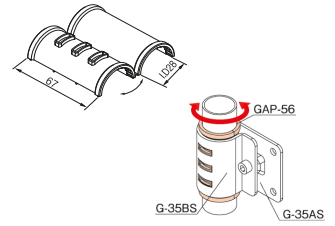
Weight: 7 g  
Packaging unit: 600 pcs

**GAP-44** Pivoting joint



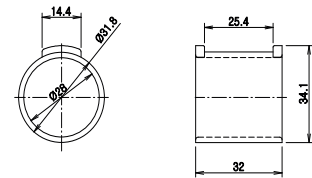
Weight: 12 g  
Packaging unit: 200 pcs

**GAP-56** Pivoting joint



Weight: 10 g  
Packaging unit: 300 pcs

**BUSH-12** Slide bush made of metal

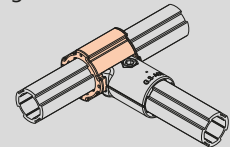


Weight: 35 g  
Packaging unit: 180 pcs

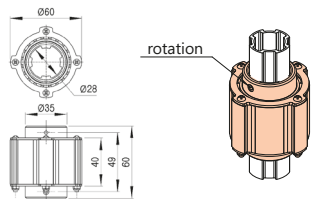


**Slide bush**

- Die-cast aluminium attachment joint for realising sliding or expandable structures
- Designs that are guided and unguided are available
- Easy, angled assembly on profile grooves

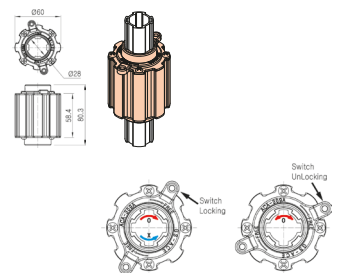


**ARU-28A** Attachment joint with rotating unit



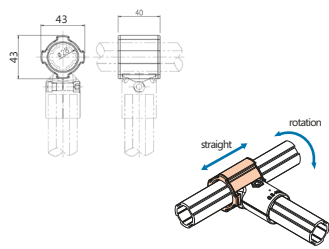
Weight: 240 g  
Packaging unit: 40 pcs

**ACA-309A** Slide bush with rotation unit



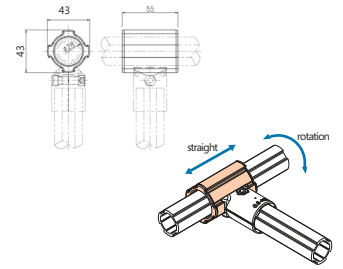
Weight: 42 g  
Packaging unit: 160 pcs

**AH-540** Slide bush rotatable, short type 



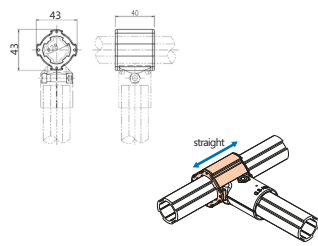
Weight: 34 g  
Packaging unit: 100 pcs

**AH-555** Slide bush rotatable, long type 



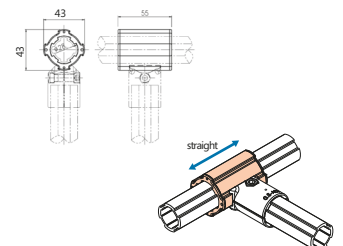
Weight: 46 g  
Packaging unit: 100 pcs

**AH-640** Slide bush, short type 



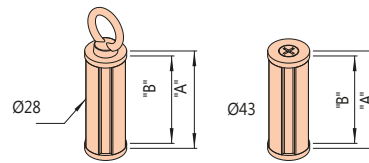
Weight: 35 g  
Packaging unit: 100 pcs


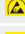


**AH-655** Slide bush, long type 



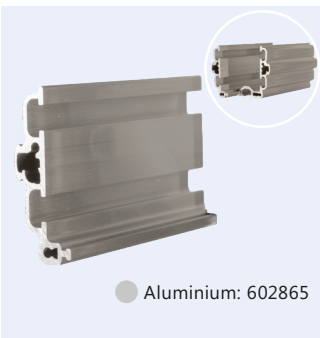
Weight: 47 g  
Packaging unit: 100 pcs

**WT-...** Weight for easy automation



Art.-No.	Name	"A" full length	"B" pipe length	Weight
126465	 WT-2802	79 mm	70,0 mm	0.25kg±0.01kg
126466	 WT-4305	64 mm	55,8 mm	0.5kg±0.01kg
126467	 WT-4310	134 mm	125,9 mm	1.0kg±0.01kg
126468	 WT-4320	276 mm	267,3 mm	2.0kg±0.01kg

**PRG-2810L** Sliding guide element, left, without castors 



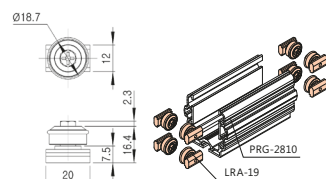
Weight: 72 g  
Packaging unit: 24 pcs  
Length: 100 mm

**PRG-2810R** Sliding guide element, right, without castors 



Weight: 100 g  
Packaging unit: 24 pcs  
Length: 100 mm

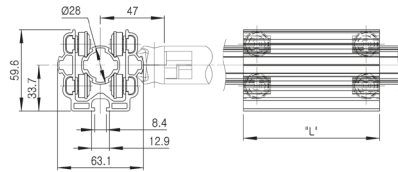
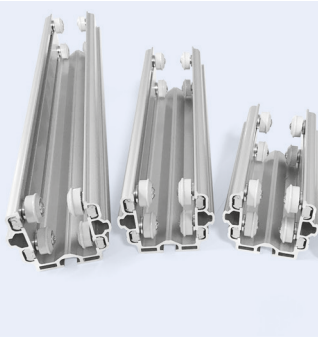
**LRA-19(NMB Bearing)** Linear roller 



Weight: 17 g  
Packaging unit: 300 pcs

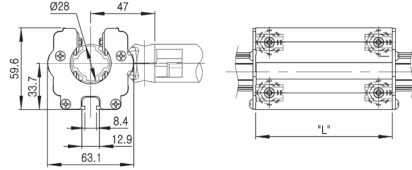
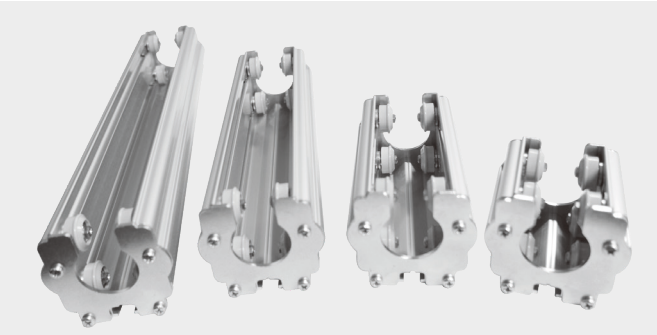


**PRG-2810A** Pipe roller guide with 8 roller, various length



Art. No.	Name	Length	Weight	Packaging unit
125248	PRG-2810A	100 mm	30 g	10 pcs
125249	PRG-2820A	200 mm	46 g	5 pcs
125250	PRG-2830A	300 mm	61 g	4 pcs

**PRG-28...B** Pipe roller guide (with cover plate)



Art. No.	Name	Length	Weight	Packaging unit
401525	PRG-2805B	50 mm	290 g	20 pcs
401526	PRG-2810B	100 mm	370 g	10 pcs
401527	PRG-2820B	200 mm	530 g	5 pcs
401528	PRG-2830B	300 mm	680 g	4 pcs

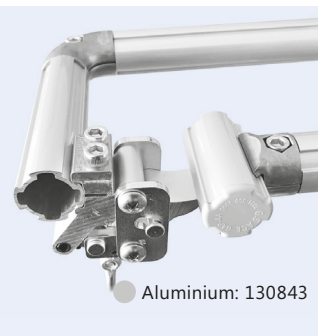


Joints that securely hold profiles.

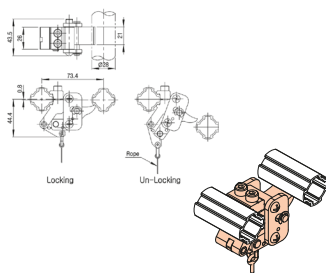
**Add-ons**

- Various add-ons like door bolt, pipe lock and roller guides.
- The lift locking mechanism engages on one side and can be released by hand. Material: Steel

**LAD-A** Hub locking, single direction, detachable

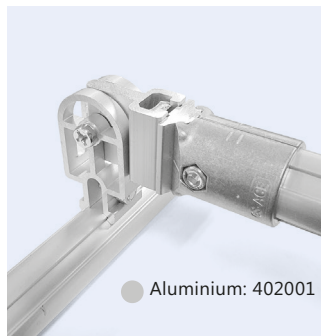


Aluminium: 130843

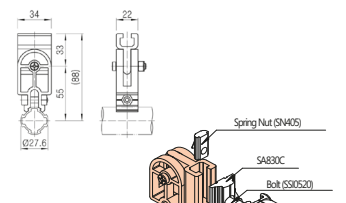


Weight: 118 g  
Packaging unit: 20 pcs

**ACA-319A** Aluminium hinge

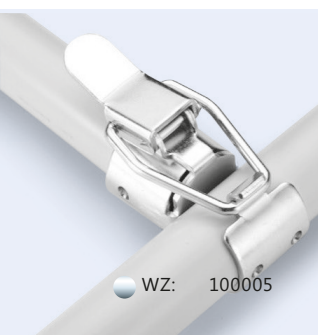


Aluminium: 402001

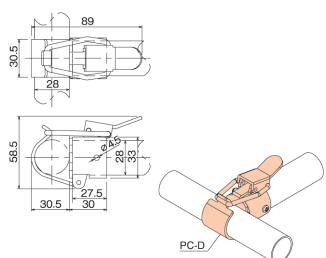


Weight: 83 g  
Packaging unit: 60 pcs

**PC-D** Pipe lock (metal)



WZ: 100005

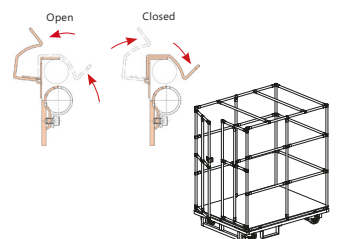


Weight: 157 g  
Packaging unit: 50 pcs

**GA-DL-15** Set of door bolt



WZ: 118368



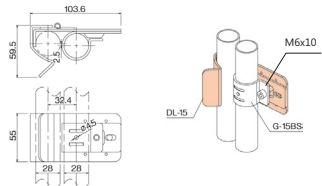
The set consists of following parts:

- 1 x DL-15
- 1 x M0610
- 1 x G-15BS

**DL-15** Door bolt

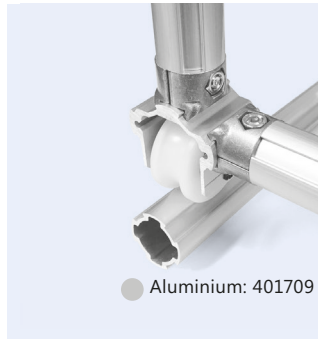


WZ: 116739

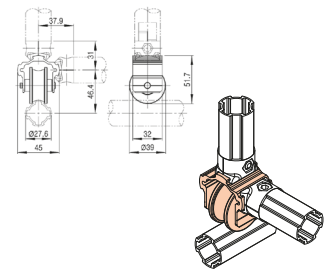


Weight: 307 g

**ACY-A306** Role for roller guides



Aluminium: 401709

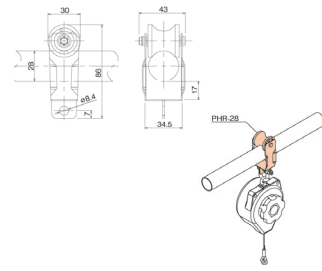


Weight: 83 g  
Packaging unit: 60 pcs

**PHR-28** Tool trolley for pipe Ø28 mm



WZ: 114945



Weight: 45 g  
Packaging unit: 500 pcs

**WW 9575** 2-axe trolley



WZ: 112289

- Castors: Ø 24 mm
- With mounting plate suitable for carabiners
- Also suitable for galvanized and aluminium running rails

**KBH-6** Snap hook



WZ: 110181

- For tool trolley or 2-axe trolley
- Length 60 mm
- Thickness 6 mm
- Galvanised

Application examples WW9575 and KBH-6



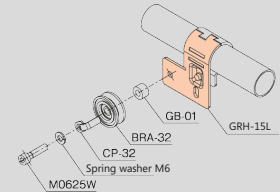
**Single/double pipe running rail**  
The WW 9575 tool trolley can also run in a double pipe of the BeeWaTec pipe racking system by G.S ACE, which is integrated in the optional extension of the QUATTRO system. Alternatively it is possible to connect two pipes in the required length with GA-9S double joints. PHR-28 may be used in a single pipe.



Thinking around the corner?

Deflection joints

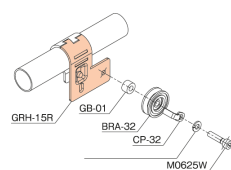
- For rockers and linear lifters the rope deflection is extremely helpful
- Available in WZ



**GRH-15R** Deflection joint, roller holder horizontal 180°

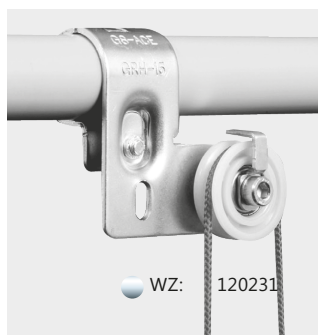


WZ: 120224

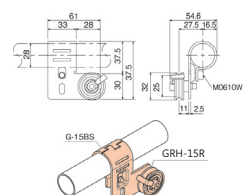


Weight: 55 g  
Packaging unit: 270 pcs

**GRH-15R Set** Set of deflection joints



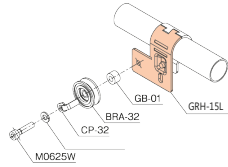
WZ: 120231



Weight: 129 g

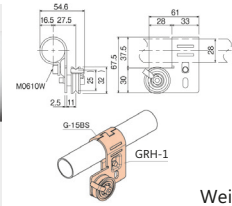
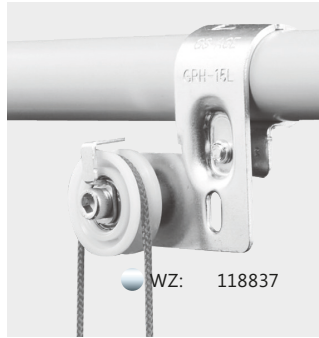
- The set consists of following parts:
- 1 x M6x10
  - 1 x GRH-15
  - 1 x G-15BS
  - 1 x GB-01
  - 1 x BRA-32
  - 1 x M6x25

**GRH-15L** Deflection joint, roller holder horizontal 180°



Weight: 55 g  
Packaging unit: 270 pcs

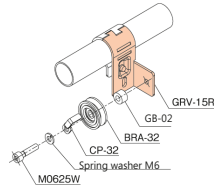
**GRH-15L Set** Set of deflection joints



Weight: 129 g

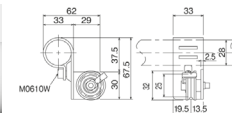
- The set consists of following parts:
- 1 x M6x10
  - 1 x G-15BS
  - 1 x GRH-15
  - 1 x GB-01
  - 1 x BRA-32
  - 1 x M6x25

**GRV-15R** Deflection joint



Weight: 55 g  
Packaging unit: 240 pcs

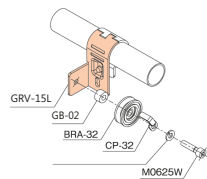
**GRV-15R Set** Set of deflection joints



Weight: 122 g

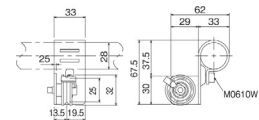
- The set consists of following parts:
- 1 x M6x10
  - 1 x G-15BS
  - 1 x GRV-15R
  - 1 x GB-01
  - 1 x BRA-32
  - 1 x M6x25

**GRV-15L** Deflection joint



Weight: 55 g  
Packaging unit: 240 pcs

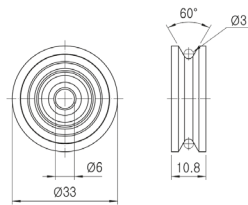
**GRV-15L Set** Set of deflection joints



Weight: 122 g

- The set consists of following parts:
- 1 x M6x10
  - 1 x G-15BS
  - 1 x GRV-15L
  - 1 x GB-01
  - 1 x BRA-32
  - 1 x M6x25

**BRA-32** Cord roller



Weight: 12 g  
Packaging unit: 1000 pcs

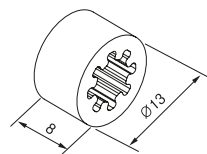
**ABRA-32** Cord roller made of steel



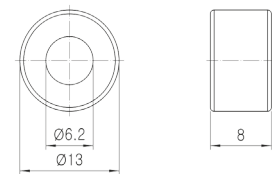
- Diameter 32 mm
- Thickness 11 mm

Weight: 21 g  
Packaging unit: 500 pcs

**GB-01** Bushing made of plastic



**GB-02** Bushing made of galvanised steel

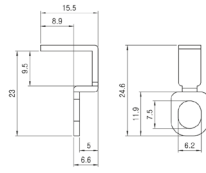


Weight: 61 g  
Packaging unit: 2000 pcs

**CP-32** Wire holder



- Material: galvanised steel



Weight: 4 g  
Packaging unit: 3000 pcs

**Pressure spring**



Pressure spring for pipes

Art.-No.	Length (untensioned)	max. mandrel Ø	Spring force
117390	71,5 mm		1 13,03 N
117523	170 mm	29,3 mm	202,87 N
117524	245 mm		200,51 N



General accessories.

**Ropes and accessories**

- Wire rope
- Rope drum
- Wire rope clip
- Rope thimble
- Turnbuckle

**Wire rope clip**



- Wire rope clamp for steel ropes
- Joining and clamping two wire ropes between the half-shells

Art.-No.	Rope diameter	Material
402654	2 mm	Steel, galvanized
402655	3 mm	Aluminium

**DSSK-3** Rope thimble



- Rope thimble 3 mm - DIN 6899
- Material: galvanised steel

WZ: 118518

Weight: 4 g

**DSK-4** Wire rope clip



- M4 wire rope clip, 3 mm Duplex
- Material: stainless steel

stainless steel: 118521

Weight: 61 g  
Packaging unit: 2000 pcs

**DSK-3** Wire rope clip

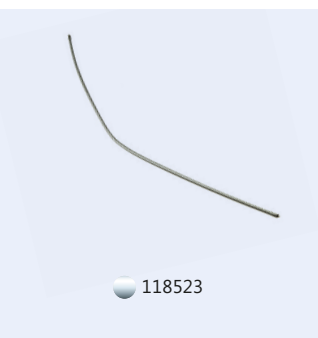


- Wire rope clip, 3 mm - DIN 741
- Material: stainless steel

stainless steel: 118522

Weight: 4 g  
Packaging unit: 3000 pcs

**DS2-5** Wire rope



- Rope diameter 2.5 mm
- Permitted load: 70 kg
- Length: 50m
- Material: steel
- Surface: galvanized

118523

Weight: 26 g

**Turnbuckle M6**



- Turnbuckle M6
- DIN 1480 with loops
- Galvanised steel, blue passivated (A2K)
- Thread type x nominal diameter: M6
- Length: 110 mm

WZ: 130652

Weight: 10 g  
Packaging unit: 200 pcs



**Rope drum**

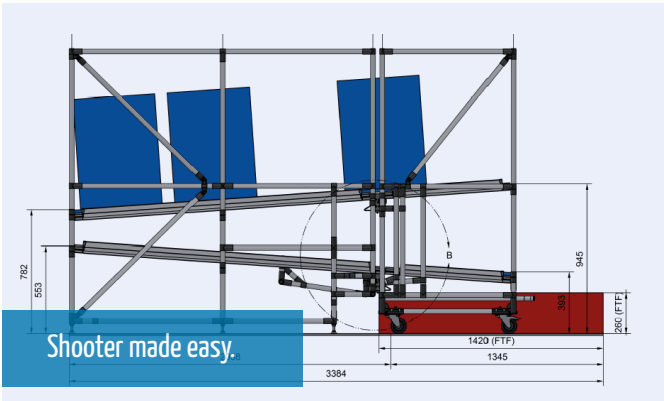


tear-resistant 3mm cord with outer sheath layer and three strong multifilament cores made of 100% nylon cord.

Allowable load: 40kg

● Blue: 302222

Length: 100 m



Shooter made easy.

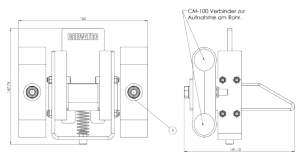
**Shooter**

- Shooters are constructions that mutually dock at each other (automatically or manually)
- The containers on a roller track roll independently from one rack to another

**MC-SHV Front shooter**

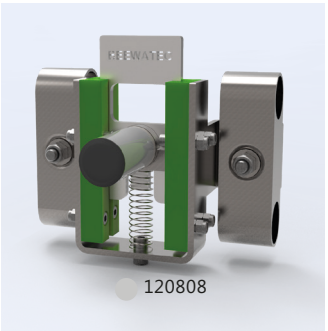


● 123901

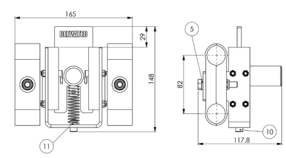


- Max. impact energy 100 N.
- Attachment to the pipe racking system with 2 pieces of CM-100
- Optional with magnets to hold the shooter position on request.

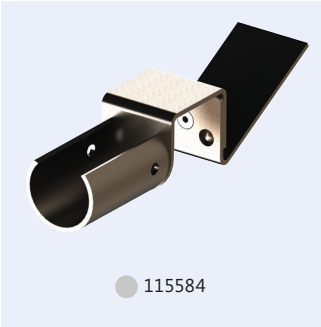
**MC-SFS Lateral shooter**



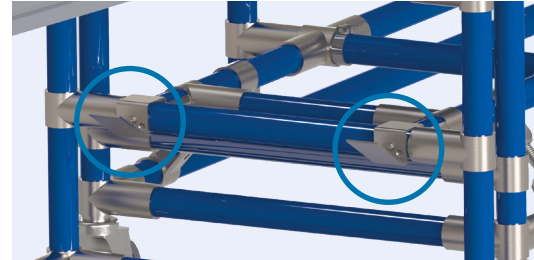
● 120808



**MC-SHA Locking shooter**



● 115584



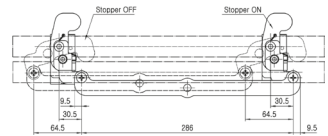
Locking via attachment joints and MC -SHA

- Prevents a trolley from rolling away during shooter operations.
- Fixing the pipe with drilling screw SB3916 possible.

**MCY-AB301 Set of one touch stopper**



● WZ: 108805



The set consists of following parts:

- 2 x MCY-A301 • 1 x MCY-B301
- 2 x BL10W • 1 x TR0616W LP



General accessories.

## Accessories

- Pull-out units
- Gas pressure springs

### Pull-out units Fully extendable telescopic runners



- With arrester to hold in closed position
- Material mounting.
- Material: Steel, galvanised
- Other designs and sizes on request

Art. No.	Length of fitting	Length of extension	Width x height	Loading capacity per pair	Bearing retainers
109810	300 mm	308 mm	12.7x26.3mm	32 kg	2
109811	350 mm	357 mm			
109812	400 mm	406 mm			
109813	450 mm	456 mm			
109814	500 mm	505 mm			
109815	550 mm	554 mm	17.5x55.8mm	94 kg	4
403097	300 mm	320 mm			
403098	350 mm	375 mm			
403099	400 mm	440 mm			
403100	450 mm	495 mm			
403101	500 mm	550 mm			
403076	550 mm	600 mm			
403063	600 mm	650 mm	110 kg	123 kg	
403052	700 mm	750 mm	119 kg		
			129 kg		

### GF... Gas pressure springs



- Vertical installation
- Piston rod downwards
- Max. 60° inclination
- Attachment with threaded rods.
- Guaranteed service life: 50,000 strokes provided installation instructions are complied with
- Other designs and sizes on request.

Art. No.	Name	Extension force	Lift	End cushioning	Attachment thread
106457	GF 6-15-050-050-M5	50 N (±20 N)	50 mm	20 mm (±10 mm)	2 x M5
106456	GF 6-15-100-050-M5		100 mm		
106452	GF 8-19-100-200-M6	200 N (+40/-20 N)	100 mm		
106453	GF 8-19-150-200-M6		150 mm		2 x M6

### Lug for gas pressure springs



- M5:  
Dimensions: 6.1 x 6 x 16 mm  
Material: Steel, galvanised, blue chrome-plated
- M6:  
Dimensions: 6.1 x 3 x 23 mm  
Material: Steel, galvanised

- GVZ (M5): 106458
- GVZ (M6): 604249

### Clevis for gas pressure springs with bolt



- M6:  
Dimensions: 6x12mm  
Material: Steel, galvanised, blue chrome-plated

- GVZ (M6): 106455

**Publisher and production:**

BeeWaTec AG, Kunstmühlestraße 16, DE-72793 Pfullingen  
Tel. 0049-7121-62 87 16-0, E-Mail: info@beewatec.de  
Release: 02/2024 | Version: 1.02 | Art.-No. 401088

**General notes:**

Technical changes, further developments, changes of products and modifications are reserved, even without previous notification. We assume no guarantee for mistakes in printing, writing and translation. In either case the German catalogue version has precedence. All information is not binding and subject to change.

Please refer to the BeeWaTec user manual for the information relevant to the holding and tightening forces.



## **BeeWaTec AG**

Kunstmühlestraße 16  
DE-72793 Pfullingen

Phone +49 (0) 7121-62 87 16-0  
Fax +49 (0) 7121-62 87 16-499

info@beewatec.de

## **Austria**

### **BeeWaTec GmbH**

Leopold-Böhm-Straße 10/D53  
AT-1030 Wien

Phone +43 (1) 890 00 58  
Fax +43 (1) 890 01 94

info@beewatec.at

## **Switzerland**

### **BeeWaTec AG**

Wilerstrasse 68  
CH-6062 Wilen (Sarnen)

Phone +41 (0) 62 891 00 00

info@beewatec.ch

## **Czech Republic / Slovakia**

### **BeeWaTec s.r.o.**

Dřevařská 13  
CZ-68001 Boskovice

Phone +42 (0) 515-554 400  
Fax +42 (0) 515-554 410

info@beewatec.cz

## **Poland**

### **BeeWaTec Sp. z o.o.**

ul. Strefowa 25  
PL-58-200 Dzierżoniów

Phone +48 (0) 74-661 8564

sales@beewatec.pl

## **Hungary**

### **BeeWaTec Hungária Bt.**

Kiskörösi út 8  
HU-6000 Kecskemét

Phone +36 (20) 343-8736  
Fax +36 (0) 76-507-001

info@beewatec.hu

## **Romania**

### **BeeWaTec EastTrade S.R.L**

Strada Linistei Nr. 2  
RO-400398 Municipiul Cluj-Napoca

Phone +40 (0) 364-157-798

info@beewatec.ro

## **Baltics**

### **BeeWaTec Baltics UAB**

Chemijos g. 15  
LT-51332 Kaunas, Litauen

Phone +370 69-51 17 74

info@beewatec.lt

## **Serbia**

### **BeeWaTec d.o.o.**

Makedonska 30 (Eurocentar),  
3rd floor  
RS-11000 Belgrade

Phone +40 (0) 364-157-798

info@beewatec.rs



All important adresses at a glance!

**BeeWaTec Website**  
[www.beewatec.com](http://www.beewatec.com)