

Installation only by persons with relevant electrotechnical knowledge and experience!*

Through improper installation, you endanger:

- your own life
- the lives of the users of the electrical system.

With improper installation, you risk severe property damage, e.g., through fire. You risk personal liability in the event of personal injury and property damage.

Contact an electrician!

* Technical knowledge required for installation.

The following technical knowledge is required for installation:

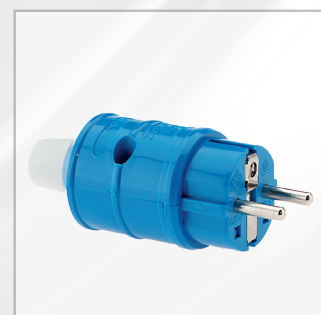
- The „5 safety rules“ to be applied: Disconnect from power; secure against being switched on again; ensure that there is no power; earth and short-circuit; cover or enclose neighbouring parts that are under voltage
- Selection of the appropriate tool, measurement devices and, if necessary, personal protective equipment
- Evaluation of the measurement results
- Selection of the electrical installation material for ensuring the shut-down conditions
- IP protection types
- Installation of the electrical installation material
- Type of the supply system (TN system, IT system, TT system) and the resulting connection conditions (earthing without a special earthing conductor, protective earthing, necessary additional measures, etc.)



Surface Mounting Socket Outlet Schuko Type



Panel Mounting Socket Outlet Schuko Type



Plug Schuko Type



Connector Schuko Type



Surface Mounting Socket Outlet Schuko Type