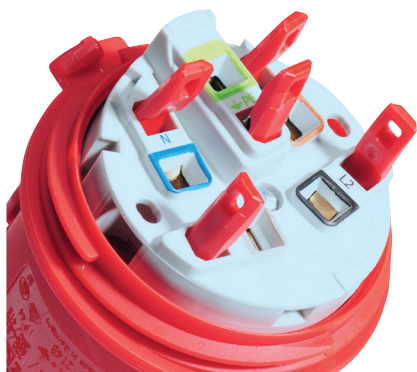




QUICK-CONNECT  
connection technology



## Simply open

The opened, screwless terminals utilise the cage-clamp technology that has been tried and tested a billion times over. They are well suited for connecting.

16A leads with cross section of 1 - 4 mm<sup>2</sup> and  
32A leads with cross section of 2.5 - 10 mm<sup>2</sup>



## Simply insert

The universal connection terminals are subject to absolutely no restrictions with regard to lead type and lead quality.

Multi-wire, fine-wire, fine-wire with galvanised ends, fine-wire with sealed ends as well as fine-wire with wire-end ferrules, gas-tight, crimped-on leads can be connected in the terminal without problem.



## Simply „click“

The terminal is open on delivery. A simple press of a finger (no tools required) on the colour-coded „plug-plug“ closes the clamp, locking it for the entire period of use.

If necessary, the terminal can be reopened by simply prying open with a screwdriver. Reconnection is possible at any time without any further handling of the lead.



## Simply secure

The unique, time- and money-saving mounting requires no maintenance following installation; the product has been inspected and approved by VDE without limitations and has been patented in Europe.

With the technology, the installer is automatically a careful craftsman. No room is left open for mistakes.

### Examples of the most common conductors:



fire-wire



single-wire

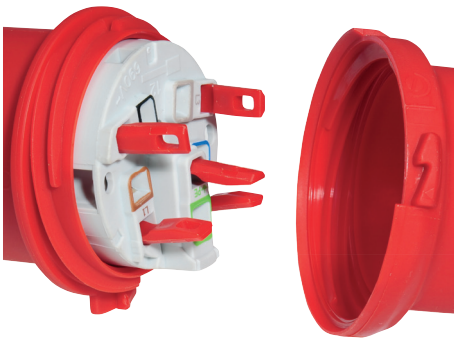


fine-wire - with wire-end ferrule, gas-tight, crimped-on



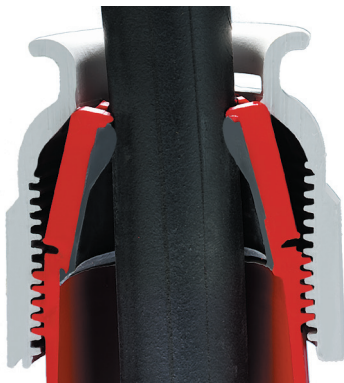
## Simply robust housing closure

Closure automatically engages visibly and audibly upon closing. No adjustment and locking necessary via an additional slider. Opens easily and wear-free with a tool. Using a standard screwdriver, turn the closure hook clockwise to loosen.



## Simply secure pressure thread connection

On delivery, the housing parts are only snapped together. Turn counter-clockwise 90° to open. Close by simply turning clockwise 90°. As a result, cables or leads cannot be twisted or hooked. The strain relief provided by the 4-way thread connection is in excess of 240 kp.



## Simply tight MULTI-GRIP cable gland

Unique, cable-protecting Multi Grip strain-relief system can be examined from the outside at any time. A wide range of cable cross sections can (almost) all be easily and reliably connected.



## Simply fast spring terminals

Put an end to failure-prone screw connections or highly specialised insulation displacement terminals. Stripped leads are visibly and audibly locked in the terminal with the press of a finger - without damage and with the optimum contact pressure. Rewiring is possible at any time by simply opening the terminal; no additional handling of the lead is required. The only screwless CEE terminal connection inspected by and approved without restriction.

TE-Plus with Multi-Grip effortlessly adapts to all cable cross-sections! The following cable diameters can be fed in without affecting the tightness or capacity for strain relief.

Save valuable connection time!  
Time savings for 16A - 32A: ~ 52%  
63A - 125A: ~ 42%

Compared with previous Bals TE connectors.

| Connector    | Cable diameter |
|--------------|----------------|
| 16A 3 u. 4p. | 8 - 18         |
| 16A 5p.      | 10 - 21        |
| 32A 3 u. 4p. | 11 - 23        |
| 32A 5p.      | 13 - 27        |
| 63A 3-5p.    | 16 - 36        |
| 125A 3-5p.   | 26 - 50        |

made  
in  
Germany



Simply. Well. Connected.

Bals Elektrotechnik GmbH & Co. KG  
D-57399 Kirchhundem-Albaum  
Phone: +49 27 23/771-0  
Fax: +49 27 23/771-177/178  
E-mail: [info@bals.com](mailto:info@bals.com)  
Internet: [www.bals.com](http://www.bals.com)

Subject to technical modifications and typographical errors