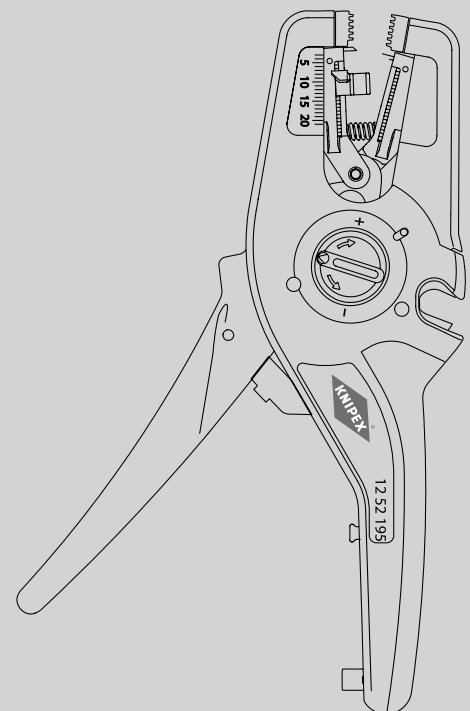


Operating instructions

12 52 195

EN **Automatic Insulation Stripper**
For stripping finely stranded wires to solid round cables



CONTENTS

1	General	3
1.1	Notes on operating instructions	3
1.2	Symbols used	3
1.3	Copyright	3
1.4	Guarantee and warranty	3
2	Safety	4
2.1	Intended use	4
3	Design and function	5
3.1	Design	5
3.2	Function	5
4	Function	6
4.1	Cutting cables	6
4.2	Stripping cables (with solid, multi-stranded and finely stranded conductors)	7
5	Maintenance and repair	9
5.1	Changing the feed stop	9
5.2	Changing the blade unit	10
6	Malfunctions	13
6.1	Causes of malfunction and troubleshooting	13
7	Technical data	14
7.1	Technical data	14
8	Disposal	14

1 General

1.1 Notes on operating instructions

These operating instructions are designed to enable you to use your tool safely and efficiently.

The tool may only be used if it is in technically perfect condition. As a consequence of technical developments, the illustrations and descriptions contained in these operating instructions may differ slightly from the tool actually delivered.

We do not accept any liability for damage caused by failure to observe these operating instructions.

1.2 Symbols used

All safety instructions in these operating instructions are indicated by corresponding symbols. The signal words at the beginning of each safety instruction express the extent of the Hazard.



Danger!

Level 1 risk source

This combination of symbol and signal word indicates an imminently hazardous situation that will result in death or serious injury if not avoided.



Warning!

Level 2 risk source

This combination of symbol and signal word indicates a possibly hazardous situation that may result in death or serious injury if not avoided.



Caution!

Level 3 risk source

This combination of symbol and signal word stands for important information that will assist in preventing damage to property or the environment.

1.3 Copyright

These operating instructions and all documentation supplied with this tool are protected by copyright and remain the property of KNIPEX.

The reprinting of these instructions, even in extract form, is only permitted with the written consent of C. Gustav Putsch KG.

1.4 Guarantee and warranty

The manufacturer grants a statutory warranty in accordance with the current sales and delivery conditions. No further warranties or assurances are granted.

Within the warranty period, the warranty covers the rectification of all defects that can be traced back to material faults or manufacturing errors.

Wearing parts are excluded from the warranty.

The repair or replacement of a tool shall not result in an extension of the warranty period. Tools shall only be repaired or replaced with "as new" parts, whose function corresponds to that of the old parts. All defective and hence replaced parts are the property of the manufacturer.

Warranty claims shall expire in particular if:

- Damage is caused through improper operation, use for purposes other than those specified by the manufacturer, or poor maintenance.
- Repairs or conversions are carried out by unauthorized persons.
- Original accessories or spare parts from KNIPEX are not used.
- Defective components are not repaired immediately to minimise the extent of the damage and so as not to impair the safety of the tool (obligation to repair).

For the rest, reference is made to the liability and warranty regulations of the current sales and delivery conditions.

2 Safety

2.1 Intended use

The tool is intended for the following uses:

- Stripping of finely stranded conductors to solid round cables from 0.08 to 16 mm² / AWG 28 - 6
- Cutting of copper and aluminium conductors up to max. 16 mm² (finely stranded) and max. 6 mm² (solid)

The tool must **not** be used for the following applications:

- Cutting steel

Any use beyond the intended purpose or any unauthorized modification shall be considered improper. The operator shall be liable for damages resulting from improper use.

Intended use also includes adhering to these operating instructions. They must be read in full before use.



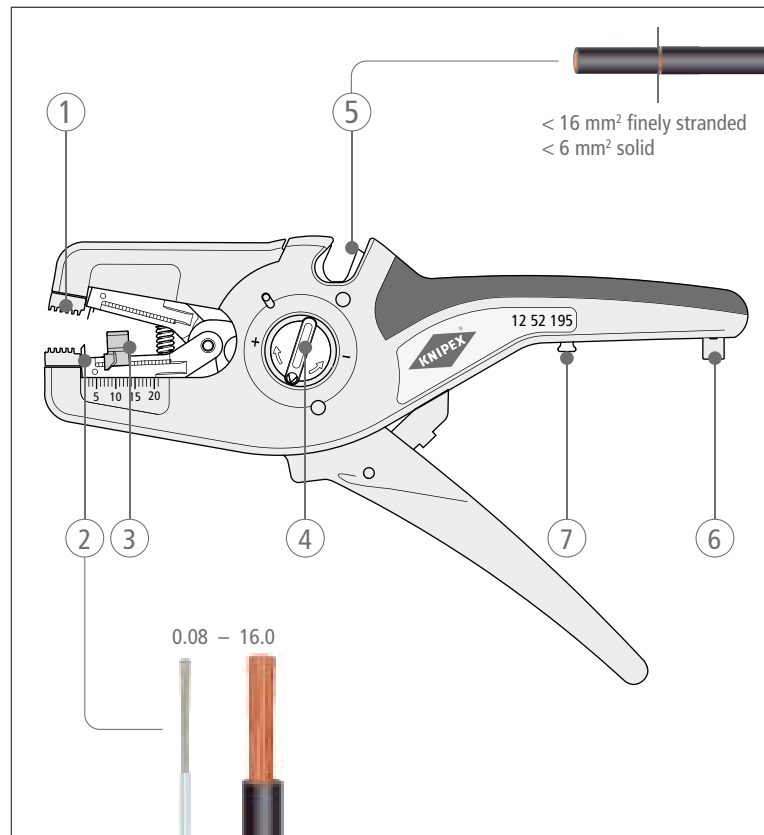
Warning!

Warning: Sharp blades!

Handling sharp blades is dangerous. For this reason, make sure to handle your tools with care when working.

3 Design and function

3.1 Design



Design of the stripping tool

- 1 Holder for cables / conductors with semicircular metal retaining jaws
- 2 Blade unit with parabolic knife for stripping
- 3 Adjustable length stop (3.0 to 18.0 mm)
- 4 The dial with its palpable locking positions enables fine adjustments to be made.
- 5 Wire cutter for finely stranded Cu and Al conductors (max. 16 mm² finely stranded, max. 6 mm² solid)
- 6 Tether attachment point for KNIPLEX Tethered Tools accessories
- 7 Mounting sleeve for connecting bar

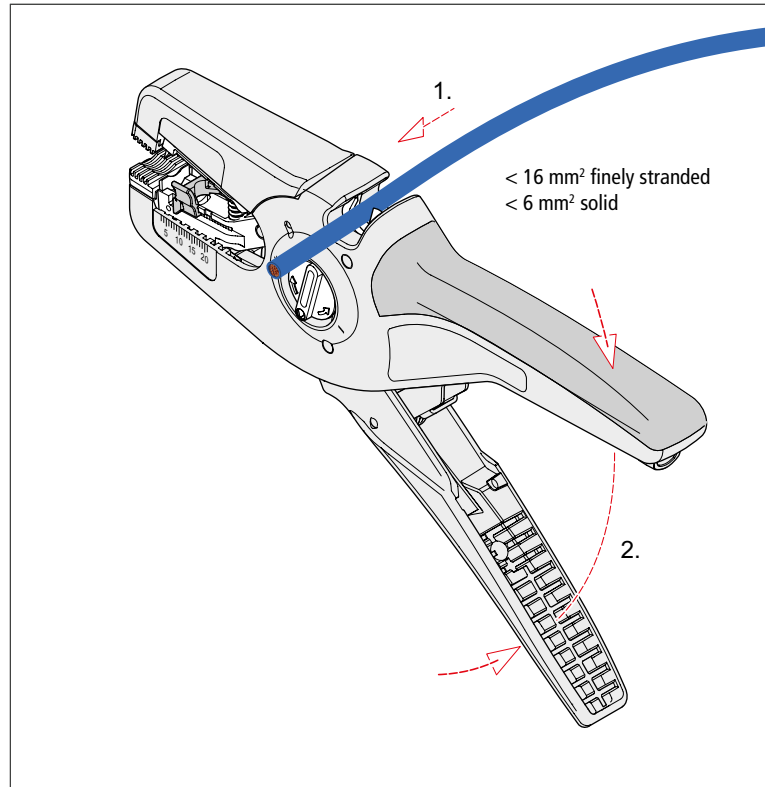
3.2 Function

Solid, multi-stranded and finely stranded conductors are shortened and stripped with the automatic wire stripper.

A patented automatic system regulates the cutting depth of the stripping blades. The zero point of the automatic system can be adjusted in fine increments for special operating conditions (insulating material, temperature).

4 Function

4.1 Cutting cables

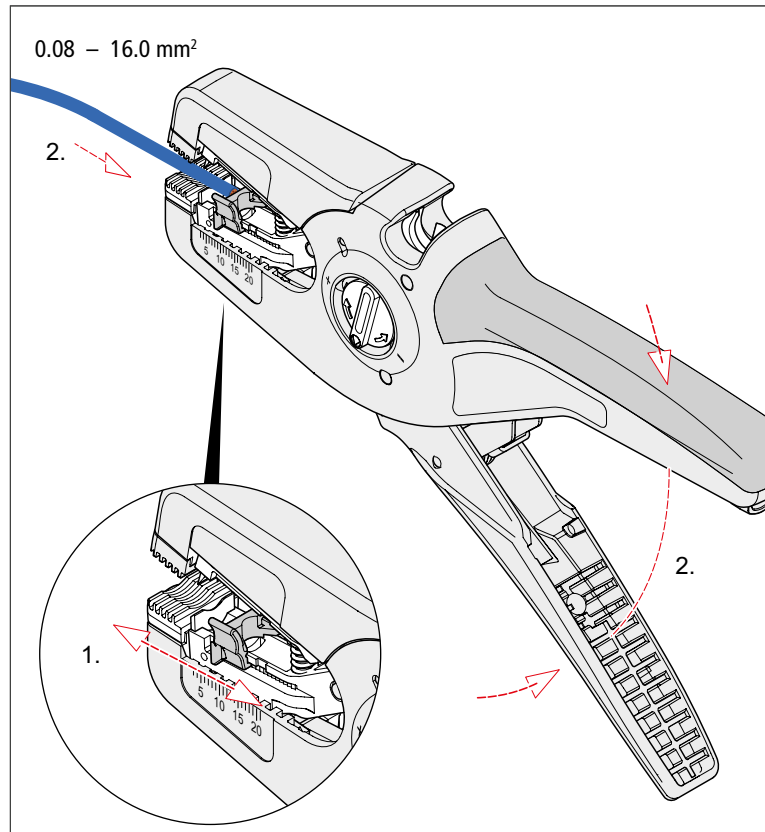


Cutting cables

1. Insert the end of the cable to be cut between the two blades of the wire cutter.
2. Firmly press the two handles together.

4.2 Stripping cables (with solid, multi-stranded and finely stranded conductors)

- » Set the length stop to the desired size (3 to 18 mm)*.
- » Insert the end of the cable into the holder.
- » Firmly press the two handles together.



Stripping single conductors

- » Pull the stripped cable out of the holder.

* If you remove the length stop, you can strip a maximum length of 20 mm.

Tip:

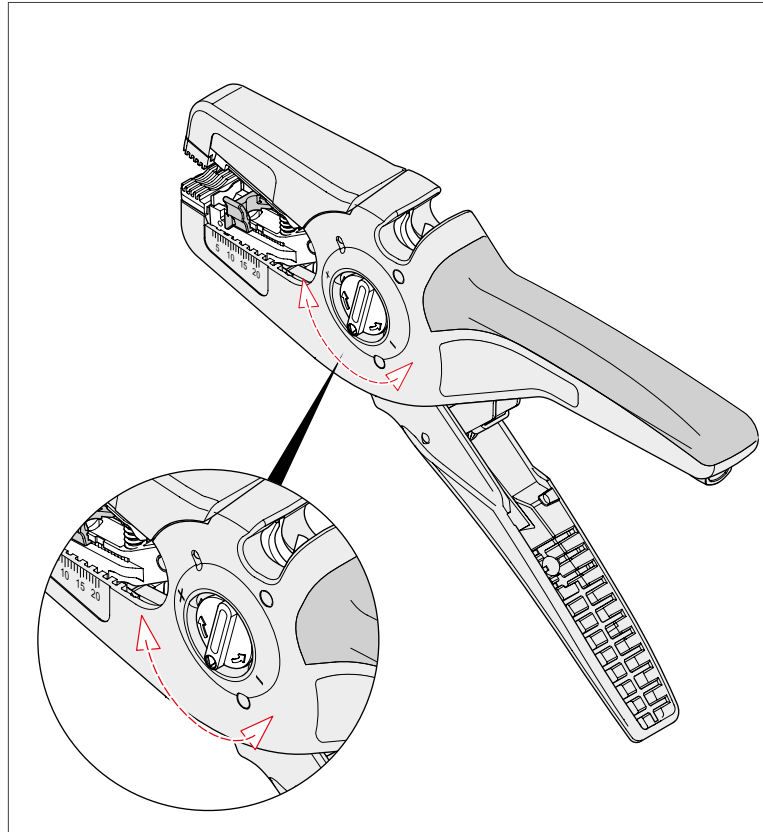
For processing very hard, halogen-free cables, we recommend using the spare blades unit with special blades 12 49 32 (cross-section range 4-16 mm²).

4.2.1 Fine adjustment of the cutting depth

It may be necessary to change the cutting depth for special materials or temperature conditions.

- » To do this, turn the adjustment wheel in the direction of '+' (increase cutting depth) or '-' (reduce cutting depth) for optimum fine adjustment.

To achieve the optimal setting, start at the zero position and turn the adjusting wheel in small steps in the '+' or '-' direction.



Readjusting the cutting depth - The position of the adjusting wheel indicates the zero position

- » After each locking, carry out a stripping test.
- » Continue turning the adjusting wheel until the desired stripping result is achieved.

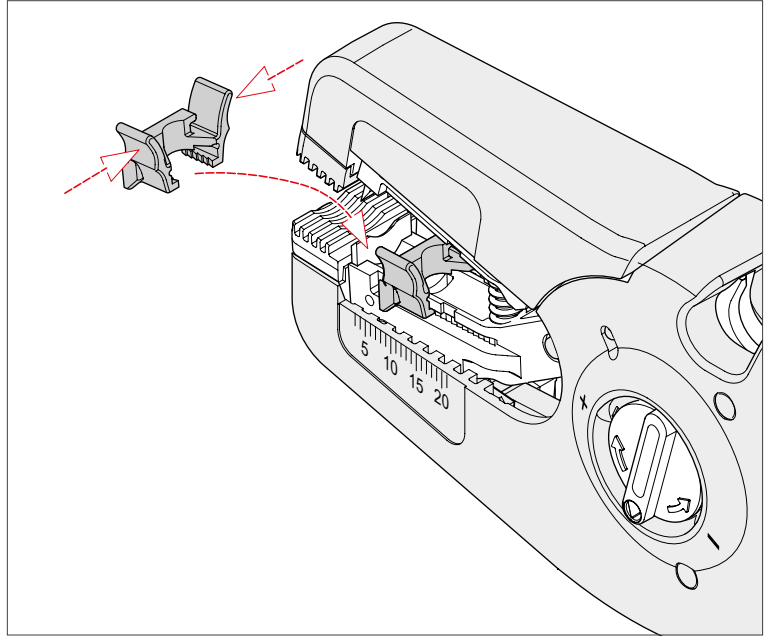
5 Maintenance and repair

Tip:

To increase the service life of the insulation stripper, oil the moving parts and the opening spring regularly.

Use a thin liquid maintenance oil (e.g. maintenance oil for sewing machines or bicycles).

5.1 Changing the feed stop

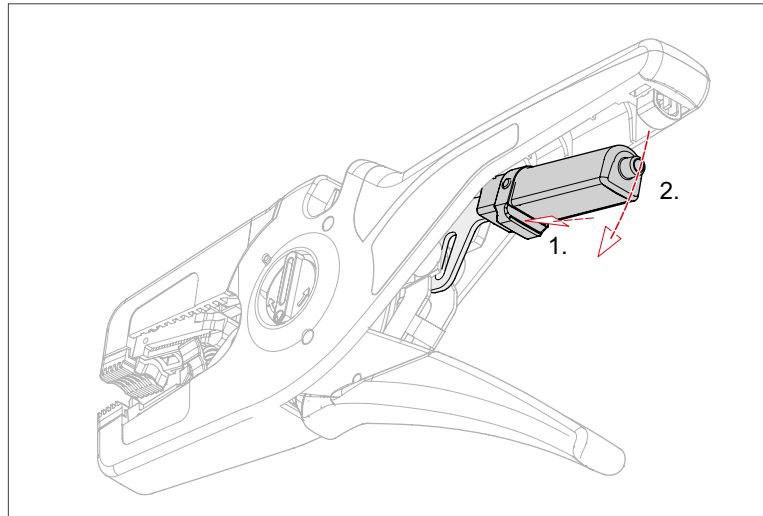


Replacing the length stop

1. Press the length stop together lightly and pull it off the guide.
2. Place the new length stop onto the guide and gently press it together until it clicks into place.
3. Check whether the length stop can be moved.

5.2 Changing the blade unit

1. Pull the retaining sleeve of the connecting bar out of the locking eyelet in the top handle.
2. Pull the connecting bar downwards and out.



Detaching the blade unit from the connecting bar

3. Pull the hinge of the blade unit slightly downwards, and pull the connecting bar towards the back at the same time.
4. Pull the connecting bar downwards into the centre between the handles. It engages in this position, and the hook of the connecting bar is separated from the blade unit.
5. Press the blade unit together.



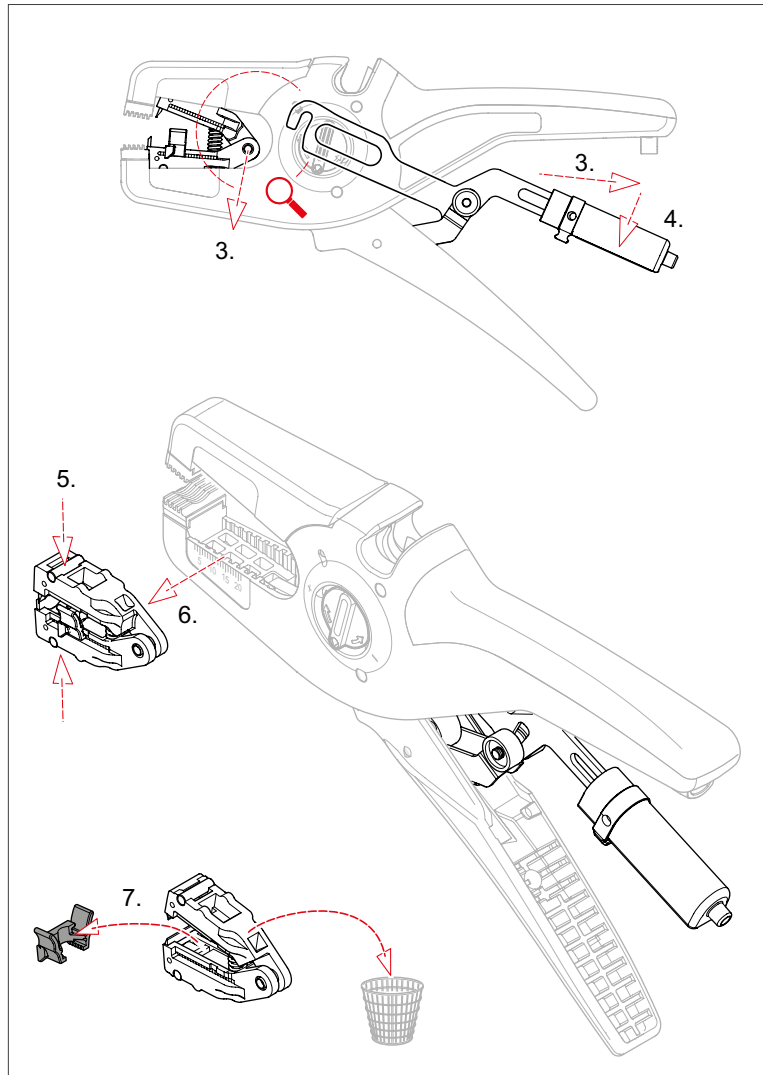
Warning!

Warning: Sharp blades!

Handling sharp blades is dangerous. For this reason, make sure to handle your tools with care when working.

6. Pull out the blade unit.

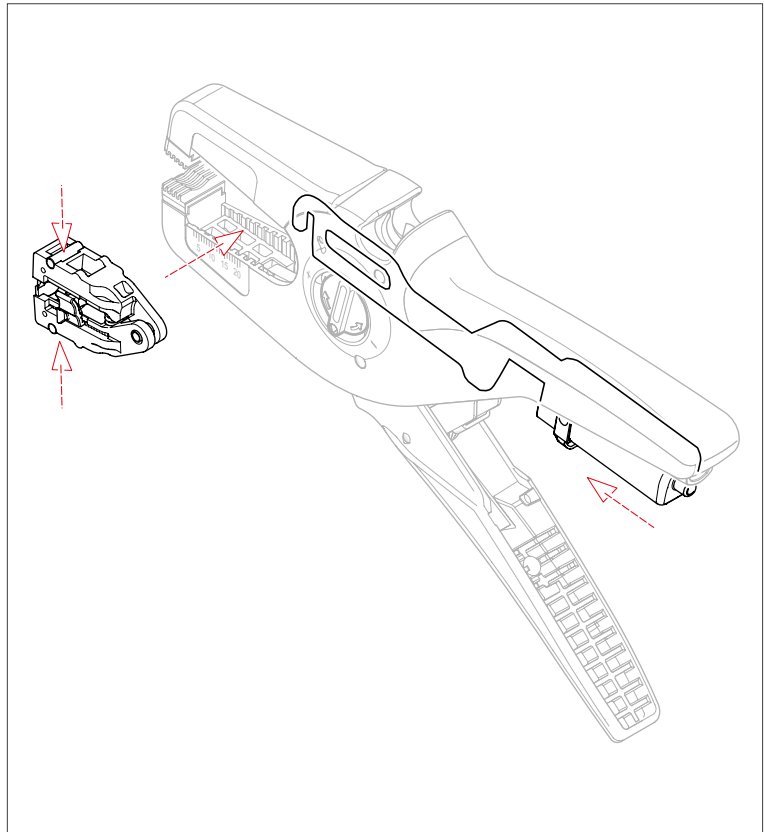
MAINTENANCE AND REPAIR



Removing the blade unit

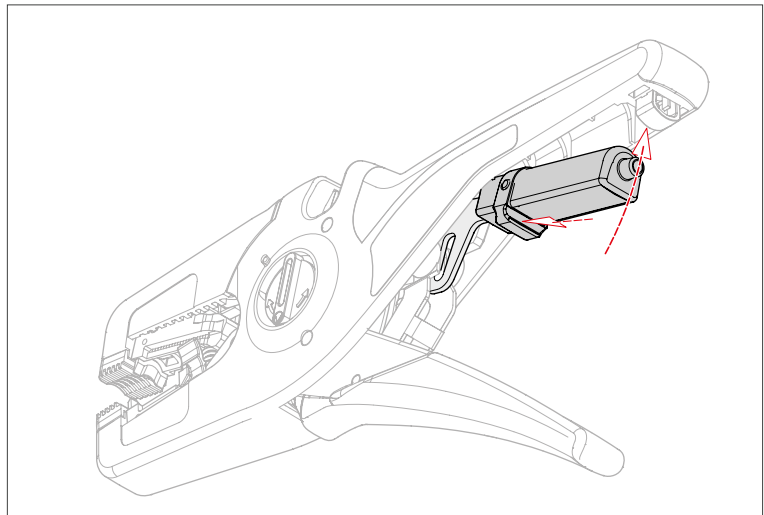
7. Remove the length stop from the blade unit and attach it to the new blade unit (the length stop is not included in the spare blades unit).

8. Lightly squeeze the new blade unit and insert it into the tool.



Detaching the blade unit from the connecting bar

9. Slide the connecting bar onto the hinge of the blade unit and secure the retaining sleeve in the locking eyelet.



Installing the blade unit and connecting it with the connecting bar

10. Check the correct function of the wire stripper by stripping a cable.
11. Dispose of the old blade unit properly.

MALFUNCTIONS

6 Malfunctions

6.1 Causes of malfunction and troubleshooting

The following table provides an overview of the most common faults:

Error	Cause	Remedy
Blades slide over the insulation	The cutting depth of the stripping knives is not set correctly	Use the adjusting wheel to set the cutting depth of the stripping knives. To do this, refer to point 4.2.1 of this operating manual.
	The knives are worn	Replace the blade unit (spare part item no.: 12 49 31)
	There are remains of insulation in the housing	Remove the remains of the insulation from the housing. Tip: Use a torch and tweezers for this.
Holding clamps do not close completely when the handles are pressed together	There are remains of insulation in the housing	Remove the remains of the insulation from the housing. Tip: Use a torch and tweezers for this.
	The sleeve for the connecting rod is not correctly fixed	Fix the sleeve in the catch eyelet.
Stripping result not acceptable	This pliers is not suitable for the cable's insulation material (e.g. multi-layered solar cable or rubber cable)	Use another pliers from the KNIPEX range
	The blade unit is not suitable for the cable's insulation material (e.g. halogen-free cables)	In this case, use the 12 49 32 blade unit for halogen-free cables (capacity 4 – 16 mm ²)
	The knives are worn	Replace the blade unit (spare part item no.: 12 49 31)

7 Technical data

7.1 Technical data

Technical data	Unit	
Item number Pliers	–	12 52 195
Item number Spare blades block	–	12 49 31
Item number Spare blades block with special blades		12 49 32
Item number Spare length stop	–	12 49 23
Item number Torsion spring	–	12 49 04
Length	mm	195
Weight	g	180
Material body	–	glass fibre reinforced plastic
Material blade	–	special tool steel, oil-hardened
Capacity	mm ²	0.08 ... 16.0
AWG	-	28 - 6

8 Disposal

The tool can be disposed of as household waste.



KNIPEX-Werk
C. Gustav Putsch KG

42337 Wuppertal

Tel.: +49 202 – 47 94-0
Fax: +49 202 – 47 74 94

info@knipex.com
www.knipex.com