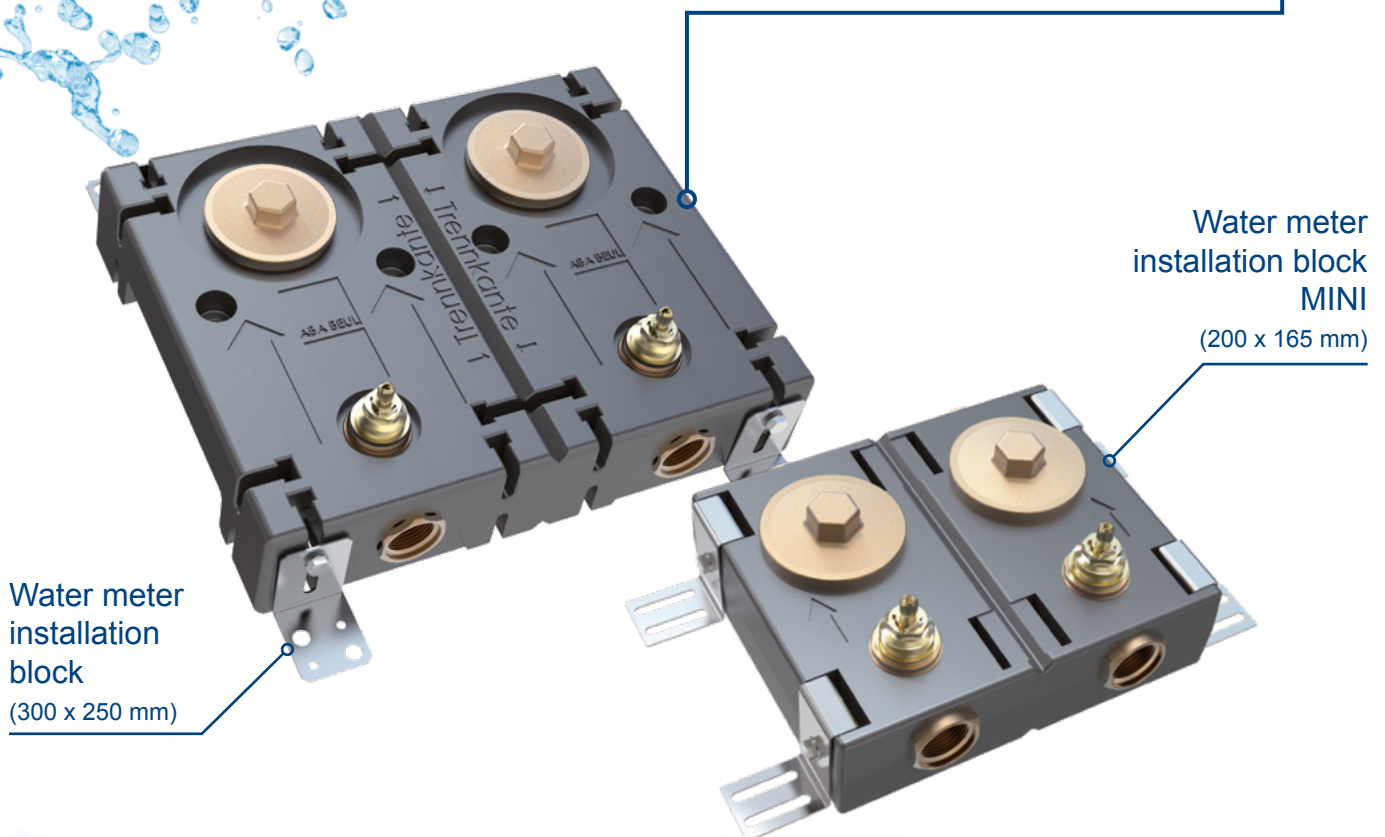


A SOLUTION YOU CAN COUNT ON

The ABA flush-mounted water meter installation block



GENERAL FACTS ABOUT OUR WATER METER INSTALLATION BLOCKS

- ✓ Force-fit and form-fit, high-quality foaming
- ✓ Meter section made from a single cast, optionally brass or gunmetal
- ✓ DUO divisible into two MONO water meter installation blocks

NEW: THE WATER METER INSTALLATION BLOCK MINI

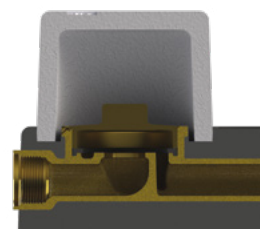
- ✓ Shut-off with grease chamber upper part
- ✓ Minimal installation dimensions, compact design
- ✓ Excellently suited to refurbishment

Water meter installation blocks

High quality – compact, flexible, affordable



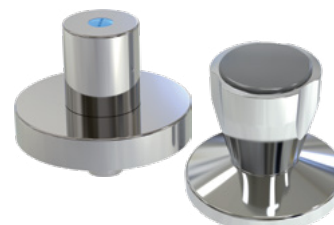
	DUO-PLUS	DUO-ÖKO	DUO-MINI
FITTING SECTION			
gunmetal	✓	✓	✓
brass		✓	✓
materials according to UBA guideline	✓	✓	✓
from a single cast	✓	✓	✓
for water meter G2" coaxial (HWW model)	✓	✓	✓
Quickturn piston valve upper part DN 15/20	✓	✓	
standard grease chamber upper part ¾			✓
form-fit, high-quality foaming	✓	✓	✓
operating pressure 10 bar, temperature 90°C	✓	✓	✓
PU RIGID FOAM INSULATION			
DIN 4102 B1, EnEV 2016	✓		
DIN 4102 B2, EN 13501-1, EnEV 2016		✓	✓
thermal conductivity 0.029 W/mK	✓	✓	✓
sound-tested in accordance with DIN EN ISO 3822	✓	✓	
GENERAL INFORMATION			
double block separable	✓	✓	✓
fastening with bracket set	✓		✓
fastening by means of tabs		✓	
standard decor sets can be used	✓	✓	
ABA ready-to-use installation set 09081, 1-piece or 2-piece			✓
WATER METER INSTALLATION BLOCK MINI ACCESSORIES			
71733.106.2	ABA flush-mounted water meter installation block MINI-RG (gunmetal)		
71740.106.2	ABA flush-mounted water meter installation block MINI-MS (brass)		
07004.106.2	Replacement grease chamber upper part, MINI block		
09079.001.2	ABA extension kit for 09074, 09077 and 09081		
09081.100.0	ABA ready-to-use installation set MINI block, 1-piece, chrome-plated, complete with handle, sleeve and rosette		
09081.200.0	ABA ready-to-use installation set MINI block, 2-piece, chrome-plated, complete with two handles, two sleeves and rosette		
WATER METER INSTALLATION BLOCK PLUS AND ÖKO ACCESSORIES			
71633.106.2	ABA flush-mounted water meter installation block DUO-ÖKO-RG (gunmetal)		
71640.106.2	ABA flush-mounted water meter installation block DUO-ÖKO-MS (brass)		
71630.106.2	ABA flush-mounted water meter installation block DUO-PLUS-RG (gunmetal)		
07061.006.2	ABA replacement upper part flush-mounted valve DN 15 / 20		
09074.002.0	ABA object decor set 10-20 mm		
09076.000.0	ABA Design ready-to-use installation set 35-120 mm		
09077.000.0	ABA Design ready-to-use installation set up to 36 mm		
09078.000.0	ABA Design ready-to-use installation set, public building model 35-120 mm		
09079.000.0	ABA extension kit for 09076, 09078 and 09088		
09079.001.2	ABA extension kit for 09074, 09077 and 09081		
09086.000.0	ABA construction operating handle for flush-mounted valves		
09088.000.0	ABA object decor set 35-120 mm		



Housing from a single cast



Single and double rosette



ABA ready-to-use installation set