

KNIPEX Quality – Made in Germany



KNIPEX TubiX[®] S – Pipe Cutter

The new TubiX[®] S: maximum results in minimal spaces.

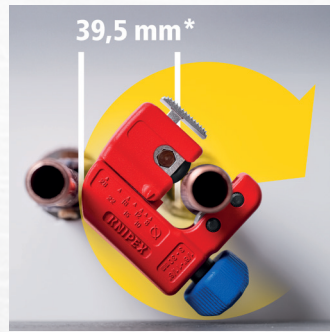


KNIPEX TubiX® S – Pipe Cutter

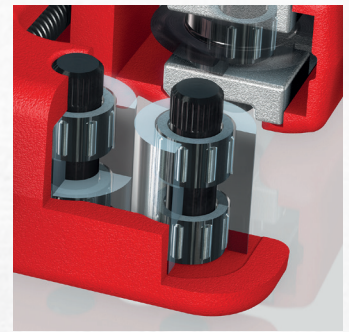
Our smallest TubiX®: pipe cutter for all installation work in the tightest of spaces

- ▶ Optimised for pipe cutting in the tightest spaces
- ▶ QuickLock one-hand locking mechanism: independent holding and clamping on the pipe
- ▶ Fits in your pocket and cuts stainless steel

- > Cuts pipes with Ø 3–30 mm (1/8 – 1 1/8") with wall thicknesses up to 2 mm
- > Very small cutting circle: minimum space required for cutting
- > Pipe diameter can be preset with the scale and clipped on to the pipe by spring-loaded cutting wheel
- > Quick and precise positioning of the spring-loaded cutting wheel
- > Cutting wheel and guide rollers with high-quality needle bearings
- > Optimised turning knob with textured thumb recess provides 20 % higher torque and prevents slipping, even in wet conditions
- > Easy to change cutting wheel, with spare wheel in the turning knob
- > Cutting wheel made of high-quality ball bearing steel



Minimised cutting circle for cutting pipes in confined spaces



Five needle bearings for particularly easy, low-fatigue cutting

QuickLock: one-handed, quick and precise fixing to pipes



Push to the right size on the tube – or...



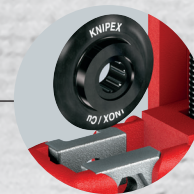
... preset with the scale and click onto the tube with the spring-loaded cutting wheel



Spare cutting wheel in the turning knob



Pipe diameter can be preset with the scale for easy clipping of the TubiX® S to avoid dropping within enclosed spaces



The cutting wheel is easy to change without additional tools



Further information on the KNIPEX TubiX® product family

Article No.	EAN	↔	mm	Ø mm	Ø Inch	g
90 31 01	4003773-090038		77	3–30	1/8–1 1/8	261
90 39 02 V01	085874		Cutting wheel for stainless steel and copper, with spare locking pin			8
90 39 02 V03	086307		5 x Cutting wheel for stainless steel and copper			25