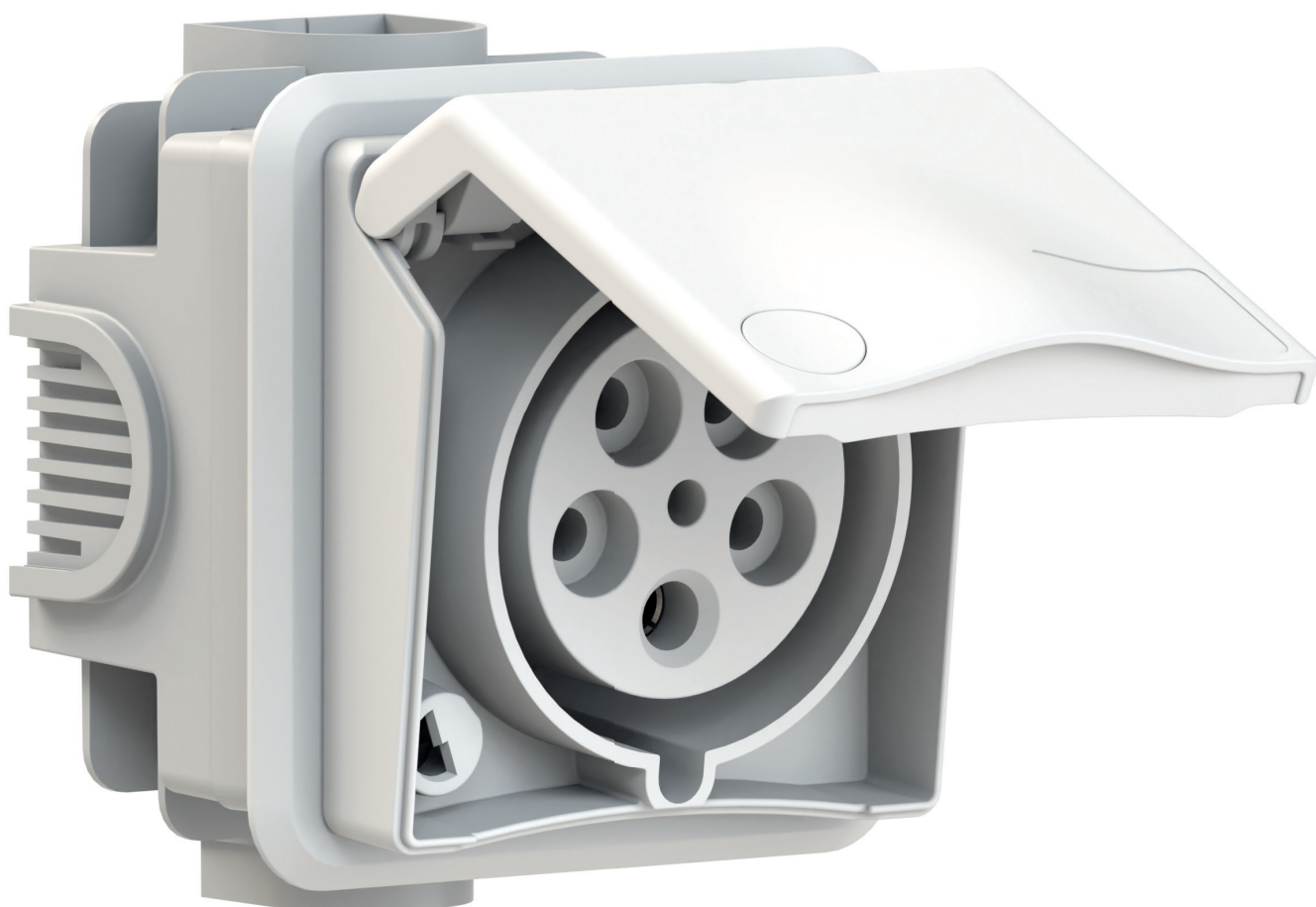
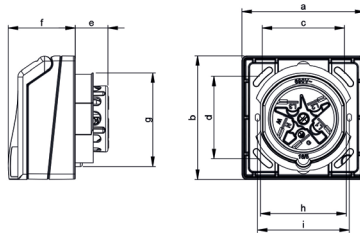
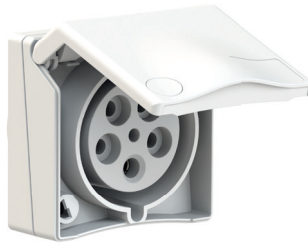


# Architecture program



**Panel mounting socket outlet**

- protection degree IP44
- with screw terminals for wiring through
- safe against ball throwing according DIN 18032
- nickel-plated contacts
- flange can be rotated by 180° - straight and sloping design all in one
- 16A sockets: installation possible in customary cavity wall and concrete sockets with fixing center 67mm requires mounting frame 18012
- with labelling field
- Domestic sockets with screwless connection design (plug-in terminal)
- housing material: PC/ABS
- color: white similar RAL9016



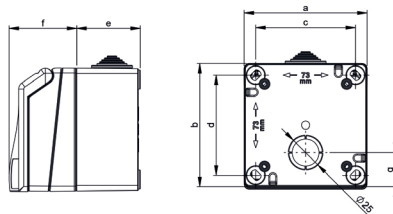
4MB465

Version	P	V	Ref. no.	Qty
16A	3	230	<b>130010</b>	6
16A	5	400	<b>130011</b>	6
32A	5	400	<b>130012</b>	6
Domestic type socket Type F	2 + E	250	<b>71010</b>	6
Domestic type socket Type E	2 + E	250	<b>71011</b>	6

Ampere Poles	16 3	16 4	16 5	32 5	Schutzk. Domestic
a	90,0	90,0	90,0	90,0	90,0
b	90,0	90,0	90,0	90,0	90,0
c	60,0	60,0	60,0	60,0	60,0
d	60,0	60,0	60,0	60,0	60,0
e	23,0	24,0	24,0	36,0	16,0
f	48,0	48,0	48,0	48,0	48,0
g	66,0	66,0	69,0	78,0	66,0
h	63,0	63,0	63,0	74,0	63,0
i	67,0	67,0	67,0	-	67,0
Cond. mm² min.	1,0	1,0	1,0	2,5	1,0
Cond. mm² max.	4,0	4,0	4,0	10	2,5

**Surface mounting socket outlet**

- protection degree IP44
- with screw terminals for wiring through
- safe against ball throwing according DIN 18032
- nickel-plated contacts
- flange can be rotated by 180° - straight and sloping design all in one
- one side entry with offset nipple, possible entry on the other with cutout
- with labelling field
- Domestic sockets with screwless connection design (plug-in terminal)
- housing material: PC/ABS
- color: white similar RAL9016



4MB463

Version	P	V	Ref. no.	Qty
16A	3	230	<b>110710</b>	6
16A	5	400	<b>110711</b>	6
32A	5	400	<b>110712</b>	6
Domestic type socket Type F	2 + E	250	<b>72010</b>	6
Domestic type socket Type E	2 + E	250	<b>72011</b>	6

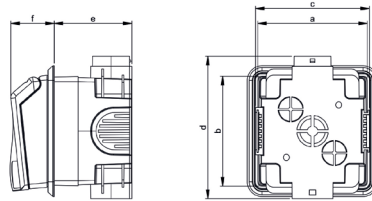
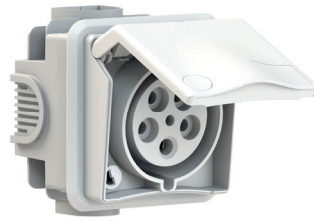
Ampere Poles	16 3	16 4	16 5	32 5	Schutzk. Domestic
a	90,0	90,0	90,0	90,0	90,0
b	90,0	90,0	90,0	90,0	90,0
c	73,0	73,0	73,0	73,0	73,0
d	73,0	73,0	73,0	73,0	73,0
e	47,0	47,0	47,0	47,0	47,0
f	48,0	48,0	48,0	48,0	48,0
g	25,0	25,0	25,0	25,0	25,0
Cond. mm² min.	1,0	1,0	1,0	2,5	1,0
Cond. mm² max.	4,0	4,0	4,0	10	2,5

Flange can be rotated by 180° – straight and angled design all in one



### Flush mounting socket outlet

- protection degree IP44
- with screw terminals for wiring through
- safe against ball throwing according DIN 18032
- nickel-plated contacts
- cable entry from top, bottom, side or rear by cutout
- in rows combinable with horizontal and vertical insertion
- with integrated cover frame and a fix inclination of 6° - small protection 35mm
- with labelling field
- Domestic sockets with screwless connection design (plug-in terminal)
- housing material: PC/ABS
- color: white similar RAL9016



4MB464

Version	P	V	Ref. no.	Qty
16A	3	230	<b>1410</b>	6
16A	5	400	<b>1411</b>	6
32A	5	400	<b>1412</b>	6
Domestic type socket Type F	2 + E	250	<b>71012</b>	6
Domestic type socket Type E	2 + E	250	<b>71013</b>	6

Ampere Poles	16 3	16 4	16 5	32 5	Schutzk. Domestic
a	90,0	90,0	90,0	90,0	90,0
b	90,0	90,0	90,0	90,0	90,0
c	92,0	92,0	92,0	92,0	92,0
d	115,0	115,0	115,0	115,0	115,0
e	64,0	64,0	64,0	64,0	64,0
f	35,0	35,0	35,0	35,0	35,0
Cond. mm² min.	1,0	1,0	1,0	2,5	1,0
Cond. mm² max.	4,0	4,0	4,0	10	2,5

### Cylinder lock

- for all sockets of architecture programme
- 2 keys include
- fast and easy installation of the lock by loose locking outbreaks in the hinged lid

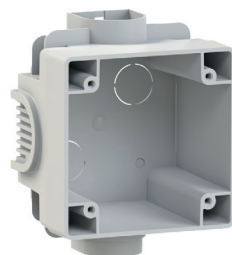


Ref. no. Qty

**18010** 6

### Flush mounting box

- incl. 4 screws
- color light grey
- can be lined up horizontally, can be plugged in vertically



Ref. no. Qty

**1801** 10

### Mounting frame

- color white
- compatible with flush mounting box 1801
- with seal
- external dimensions 105x105 mm (hole spacing 60x60mm)



Ref. no. Qty

**18012** 25

### Intermediate flange

- color white
- compatible with flush mounted box 180
- external dimensions 90x90 mm (hole spacing 60x60mm)
- also suitable for surface mounted sockets with flange 75x75 mm (hole spacing 60x60mm)



Ref. no. Qty

**18013** 25

 made  
 in  
 Germany



Simply. Well. Connected.

Bals Elektrotechnik GmbH & Co. KG  
D-57399 Kirchhundem-Albaum  
Phone: +49 27 23/771-0  
Fax: +49 27 23/771-177/178  
E-mail: [info@bals.com](mailto:info@bals.com)  
Internet: [www.bals.com](http://www.bals.com)

Subject to technical modifications and typographical errors