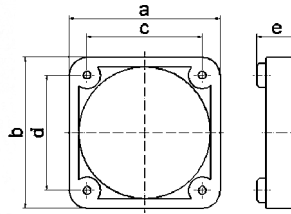
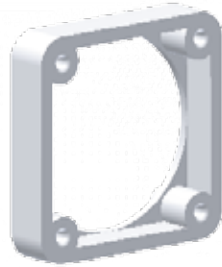


Accessories



Mounting Frame

- For attaching panel mounting socket outlets



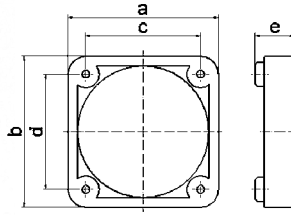
a	b	c	d	e	MDL
50	50	38	38	13	1843
54	54	44	44	10	1847
57	66	47	47	10	1848
60	60	50	50	10	1849
62	62	52	52	10	1850
62	70	52	60	10	1851

Fig.: Type 1849

30 MB 182

Mounting Frame

- For attaching panel mounting socket outlets



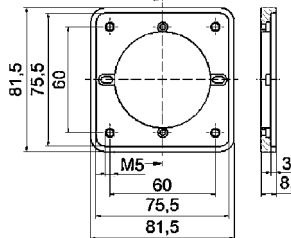
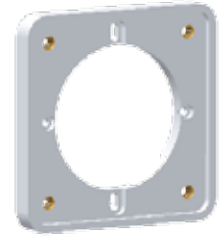
a	b	c	d	e	MDL
70	70	60	60	12	187
71	80	52	70	10	1852
80	80	70	70	13	189
87	95	77	85	12	188
100	110	90	90	10	1854

Fig.: Type 189

30 MB 182

Intermediate Flange

- For attaching panel mounting socket outlets (straight)
- With screw terminal
- For Quick-Connect 16A Panel Mounting Socket Outlets
- With flange 75 x 75 mm
- Drilling spacing 60 x 60 mm



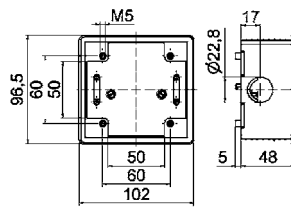
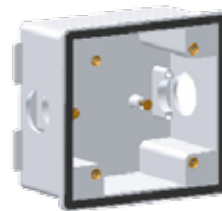
MDL
182

Fig.: Type 182

4 MB 256

Flush Mounting Box

- For panel mounting socket outlets
- Drilling spacing 60 x 60 mm
- Without terminals



MDL
183-BE

Fig.: Type 183

4 MB 13

Touch Protection Ring

- for 63A, 5p
- For attaching to contact carrier of panel mounting socket outlets



MDL
580634

Fig.: Type 580634

Touch Protection Ring

- for 125A, 4/5p
- For attaching to contact carrier of panel mounting socket outlets



MDL
58058

Fig.: Type 58058

Flush Box

- For panel mounting socket outlets
Ref.No. 13048, 13105, 13106, 13107,
13108, 13146-BE



Fig.: Type 180

MDL

180

Flush-Mounting Adapter

- For panel mounting socket outlets listed
Ref.No. 13048, 13105, 13106, 13107,
13108, 13146-BE



Fig.: Type 181

MDL

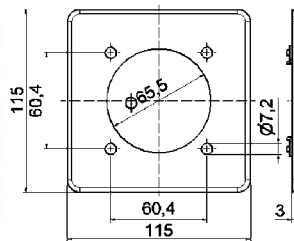
181

Mounting Flange

- For panel mounting socket outlets



Fig.: Type 185



4 MB 12

MDL

185-BE

Empty Enclosure

- Dimension of enclosure 102 x 102 mm
- For panel mounting socket outlets with
flange 75 x 75 mm
- Drilling spacing 60 x 60 mm



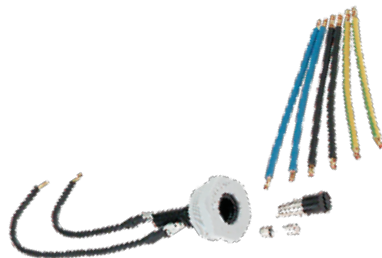
Fig.: Type 18048

MDL

For socket with protection degree IP44 18048

For socket with protection degree IP67 18049

**Accessories for TK-Combi
Socket Outlet**



MDL

Wiring harness 16A 1863

Wiring harness 32A 1896

G fuse base 5 x 20 mm DIN 41671 1862

G fuse link 6.3A 1864

G fuse link 10A 1865

G fuse link 16A 1866

Hanging Clip

- For plugs and connectors with Multi-Grip cable gland



Fig.: Type 58401

	Ref. No.
for 16A	58400
for 32A	58401
for 63A and 125A	58402

Cable Gland Multi-Grip with Additional Strain Relief

- For plugs and connectors with Multi-Grip cable gland



Fig.: Type 29132

	Ref. No.
for 16A/ 3p, 4p TE + TE-Plus, 16A/ 3p, 4p, 5p QC + TLS	29148
for 16A/ 5p TE + TE-Plus	29149
for 32A/ 3p, 4p, 5p TE + TE-Plus	29150
for 63A/ 3p, 4p, 5p TE + TE-Plus	29132
for 125A/ 3p, 4p, 5p TE	29133

Cable Gland Multi-Grip with Additional Strain Relief

- For plugs and connectors with Multi-Grip cable gland



Fig.: Type 29152

	Ref. No.
for 16A/ 3p, 4p TE + TE-Plus, 16A/ 3p, 4p, 5p QC + TLS	29951
for 16A/ 5p TE + TE-Plus	29151
for 32A/ 5p TE + TE-Plus	29152
for 63A/ 3p, 4p, 5p TE + TE-Plus	29153
for 125A/ 3p, 4p, 5p TE	29154

Closure Cap

- For CEE plugs
- Protection degree IP67



Fig.: Type 832

	Ref. No.
16A/ 3p	830
16A/ 4p	835
16A/ 5p, 7p	831
32A/ 3p, 4p	837
32A/ 5p, 7p	832
63A/ 3p, 4p, 5p	833
125A/ 3p, 4p, 5p	834

Reducer

- Suitable for cables less than Ø8mm
- For all 16A standard plugs and sockets with Multi-Grip as well as extra-low voltage



Fig.: Type 29129

	Ref. No.
	29129

DIN screw

- For additional locking device
- Retrofittable



Fig.: Type 58036

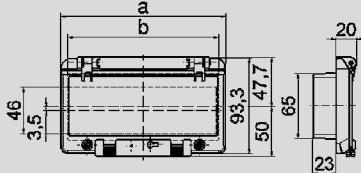
Can only be used in operating windows with Ref. No.GWE.

Ref. No.
58036

HINGED WINDOW

Hinged Window

- Self-closing
- With touch protection



30 MB 96



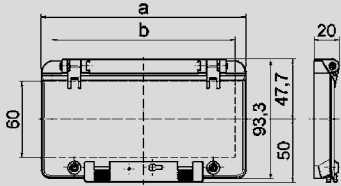
Fig.: Type 58009

Module units	Dimension a	Dimension b	Ref. No.
2	55,0	40,5	5881
4	91,0	76,5	5890
6	127,0	112,5	5899
8	162,0	147,5	58009
12	234,0	220,0	58018
13	257,5	248,5	58027

Can only be used in operating windows with Ref. No.-GWE.

Hinged Window

- Self-closing
- Without touch protection



30 MB 95



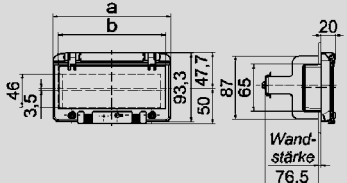
Fig.: Type 58010

Module units	Dimension a	Dimension b	Ref. No.
2	55,0	37,0	5882
4	91,0	73,0	5891
6	127,0	109,0	58001
8	162,0	144,5	58010
12	234,0	217,0	58019
13	257,5	240,0	58028

Can only be used in operating windows with Ref. No.-GWE.

Hinged Window

- Self-closing
- With touch protection and mounting bracket



30 MB 97

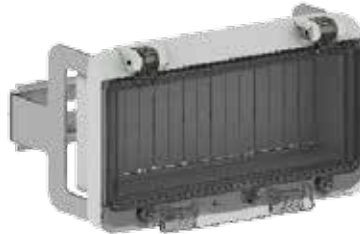


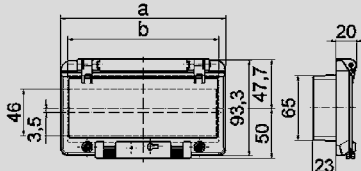
Fig.: Type 58110

Module units	Dimension a	Dimension b	Ref. No.
2	55,0	40,5	5885
4	91,0	76,5	5894
6	127,0	112,5	58004
8	162,0	147,5	58013
12	234,0	220,0	58022
13	257,5	248,5	58031

Can only be used in operating windows with Ref. No.-GWE.

Hinged Window

- Self-closing
- With touch protection



30 MB 96



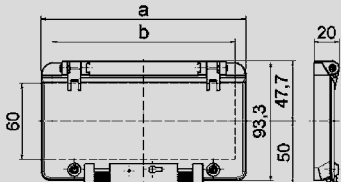
Fig.: Type 58110

Module units	Dimension a	Dimension b	Ref. No.
2	55,0	40,5	580138
4	91,0	76,5	58388
6	127,0	112,5	58590
8	162,0	147,5	58110
12	234,0	220,0	58111
13	257,5	248,5	58387

Can only be used in operating windows with Ref. No.-GWE.

Hinged Window

- Self-closing
- Without touch protection



30 MB 95



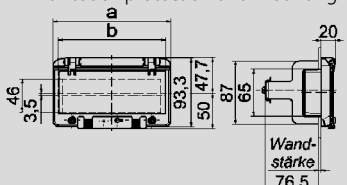
Fig.: Type 58502

Module units	Dimension a	Dimension b	Ref. No.
2	55,0	37,0	58511
4	91,0	73,0	580020
6	127,0	109,0	58503
8	162,0	144,5	58502
12	234,0	217,0	58602
13	257,5	240,0	58607

Can only be used in operating windows with Ref. No.-GWE.

Hinged Window

- Self-closing
- With touch protection and mounting bracket



30 MB 97

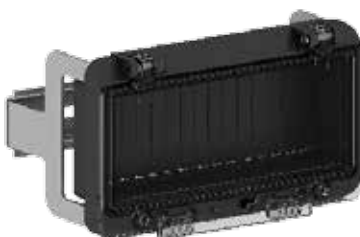


Fig.: Type 580143

Module units	Dimension a	Dimension b	Ref. No.
2	55,0	40,5	580137
4	91,0	76,5	58517
6	127,0	112,5	580141
8	162,0	147,5	580143
12	234,0	220,0	580144
13	257,5	248,5	580145

Can only be used in operating windows with Ref. No.-GWE.



Cable Gland

- Black
- Protection degree IP67



	Thread	Sealing range	Ref. No.
	M12	3-6 mm	580647
	M20	8-13 mm	580648
	M25	11-17 mm	580649
	M32	15-21 mm	580650
	M40	19-28 mm	580651
Multiple sealing insert	for M25	2x8 mm	580652
	for M32	4x8 mm	580653

Cable Gland with Pressure Equalisation

The use of pressure equalisation cable glands allows the internal pressure to adjust to the ambient pressure. The type-tested protection degree of the enclosure is fully retained. Temperature fluctuations, intense sunlight, or a sudden change in weather can cause condensation to form in combination enclosures. Basically, condensation can form in all sealed combination enclosures. The higher the protection degree is, the more likely the formation of condensation will be. We therefore recommend, especially in the case of distributors with protection degree IP67, the use of pressure equalisation cable glands.



- Minimised condensation formation and therefore reduction in downtimes and time-consuming and expensive repair work
- No expensive and high-maintenance ventilation technology required
- No drip holes which reduce the level of protection
- With air ducts for pressure equalisation
- black
- Protection degree IP67

	Thread	Sealing range	Ref. No.
	M20	6-13 mm	580656
	M25	9-17 mm	580657
	M32	13-21 mm	580658
	M40	16-28 mm	580659

Mounting Set



- For VARIABOX S - XL, MODBOX and MODBOX-Midi
- Consisting of: 4 screws 6 x 60 mm, 4 screw anchors 8 x 51 mm
Ref. No. 580640
- For VARIABOX XXL
- Consisting of: 6 screws 6 x 60 mm, 6 screw anchors 8 x 51 mm
Ref. No. 580727

Portable Stand



- For MODBOX and MODBOXMidi
- Hot-dip galvanised steel tubing
- Folding
- Weight 4 kg
- Dimensions: 350/570 x 780 x 540 mm (W x H x D)

Ref. No. **580721**

Lock Set



- For MODBOX operating window
- With locking cylinder and 2 keys
Ref. No. **58037-BE**



- For OTC window MODBOX-Midi
- With long shackle and 2 keys
Ref. No. **580642**

Portable Stand



- For VARIABOX M, L, XL
- Hot-dip galvanised steel tubing
- Folding
- Weight 4 kg
- Dimensions: 350/570 x 780 x 540 mm (W x H x D)

Ref. No. **580643**

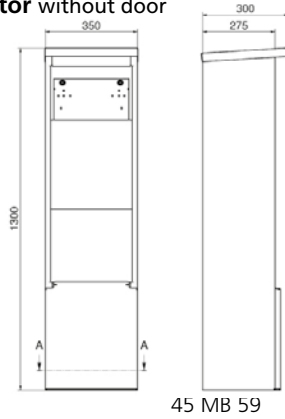
Surface Mounting Socket Outlets Unit



- For VARIABOX M and L
- Colour yellow, RAL 1023
Ref. No. **580641**

STAINLESS-STEEL DISTRIBUTORS, CONCRETE BASES

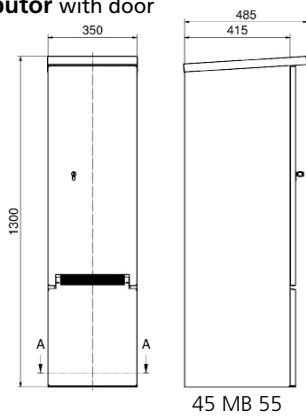
Power-Port Free-Standing Distributor without door



- Dimension of enclosure: 1300 x 350 x 275 mm
- Enclosure made of high-quality V2A stainless steel
- Brushed surface
- Mounting plate for fitting Bals enclosures
- Moveable panel for concealing cables
- Base plate suitable for pedestal mounting
- Available in different colours (optional)

Ref. No. **580589**

Power-Port Free-Standing Distributor with door



- Dimension of enclosure: 1300 x 350 x 415 mm
- Enclosure made of high-quality V2A stainless steel
- Brushed surface
- Door with box lock and single profile cylinder, internal hinges
- Mounting plate for fitting Bals enclosures
- Brush seal prevents dirt and dust from entering when door is closed
- Outgoing cables can be guided out through brush-sealed opening on front side
- Moveable panel for concealing cable
- Base plate suitable for pedestal mounting
- Available in different colours (optional)

Ref. No. **580508**

Protective Rain Canopy

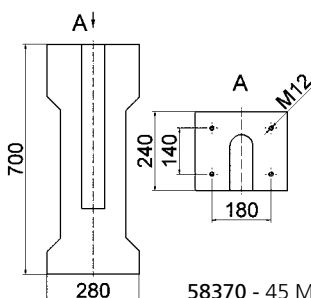
- Enclosure made of high-quality V2A stainless steel
- With side panels
- Brushed surface
- Mounting plate for fitting VARIABOXES
- Available in RAL colours (optional)



Dimensions (mm)	for VARIABOX	Ref. No.
545x286x328	S, M, L	580511
792x286x328	XL, XXL	580529
662x516x328	L DUO, XL DUO	580521

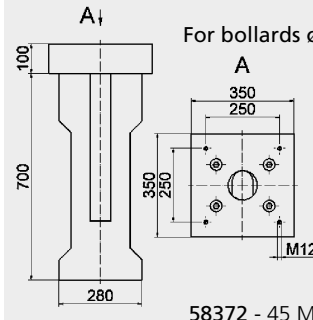
Concrete Bases

- For ground/floor attachment



For Power Ports and bollards \varnothing 273 mm and \varnothing 324 mm

For bollards \varnothing 250 mm



Ref. No.

58370

58372

