

Kabu-FESH Set Elektro B

One-use building lead-through in a set for buildings without basements



Kabu-FESH Set Elektro B



Kabu-FESH Set Elektro B, the FRÄNKISCHE building lead-through system for the Electrical Systems division is a one-use building lead-through in a set for buildings without basements. The set consists of a high-quality Kabuflex R plus type 750 cable conduit, a wall collar, a sand-tight end cap SD, and the leak-tested Kabu-IN DD internal seal for the reliable lead-through of power or telecommunication cables. The tightness of the system has been tested according to DVGW VP 601.

Cat. no.	Type	Coil content [m]	for cable diameter [mm]	Pallet content	Packing unit [pcs.]
19241075	75	6	9–24	6	1
19242075	75	10	9–24	4	1
19241110	110	6	9–48	4	1
19242110	110	10	9–48	2	1

EN 61386-24
Compressive strength type 750



Advantages

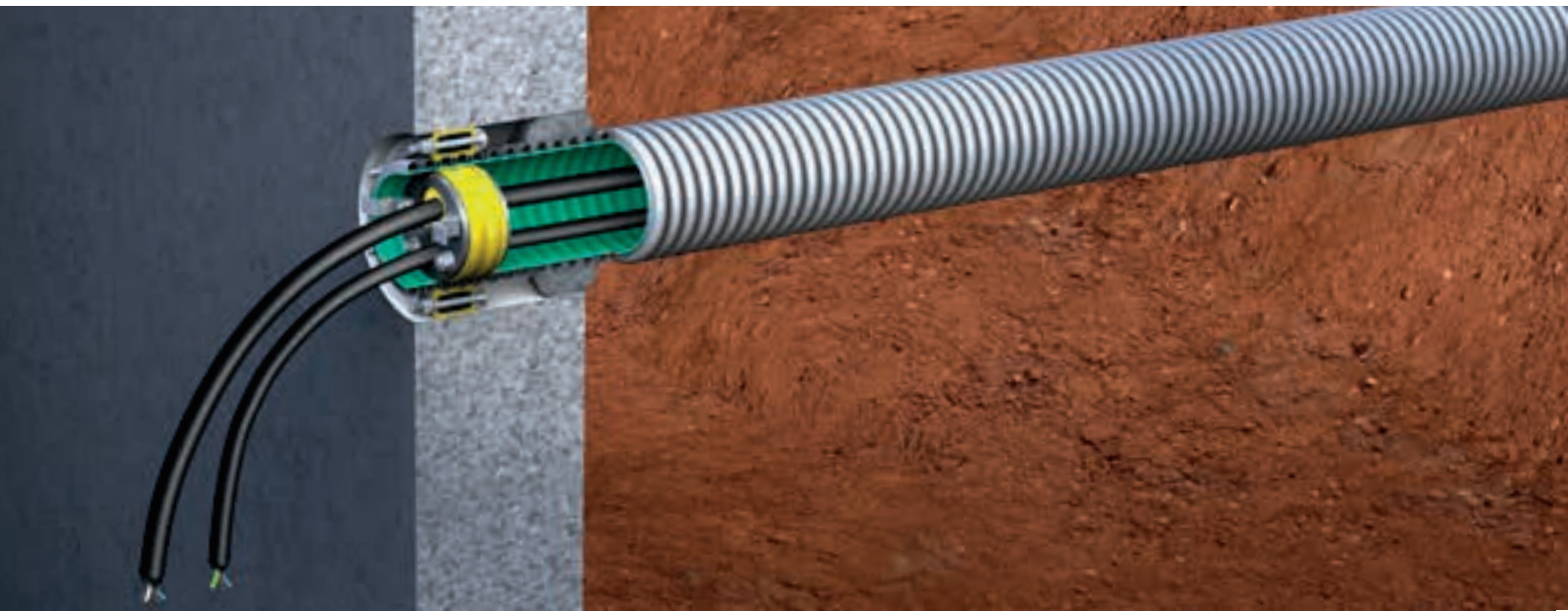
- Suited for installations according to VDE-AR-N 4100
- Suited for installations according to VDE-AR-N 4223
- Suited as building lead-through according to DIN 18012
- Gas-tight and water pressure-tight:
Type 75 up to 1.5 bar
Type 110 up to 1 bar
- CE-compliant and VDE-approved cable conduit Kabuflex R plus type 750 according to EN 61386-24 with classification N750

Application

- Waterproof concrete wear class 1 according to DAf-Stb directive (German Committee for Reinforced Concrete (*Deutscher Ausschuss für Stahlbeton*))
- Waterproof concrete wear class 2 according to DAf-Stb directive (German Committee for Reinforced Concrete (*Deutscher Ausschuss für Stahlbeton*))
- W1-E according to DIN 18533, Waterproofing of elements in contact with soil



Video on
building
lead-through



Kabu-IN



For gas-tight and water pressure-tight sealing of power and telecommunication cables in Kabuflex conduits, e.g., for connections between the building and garden or garage, and connections between individual industrial halls or commercial buildings

NEU

NEU

NEU

Cat. no.	Type	Cable Ø [mm]	Packing unit [pcs.]	Colour
1 cable				
19951063	63	9-18	1	yellow
19951075	75	9-24	1	
19951110	110	9-48	1	
2 cables				
19952110	110	9-18, 9-36	1	yellow
3 cables				
19953160	160	3 x 9-42	1	yellow
4 cables				
19954110	110	4 x 9-18	1	yellow
19954160	160	4 x 9-36	1	
6 cables				
19956160	160	6 x 9-30	1	yellow

Kabu-BV



NEU

NEU

For gas-tight and water pressure-tight sealing of Kabuflex conduits not yet filled

Cat. no.	Type	Packing unit [pcs.]	Colour
19950063	63	1	yellow
19950075	75	1	
19950110	110	1	
19950160	160	1	yellow